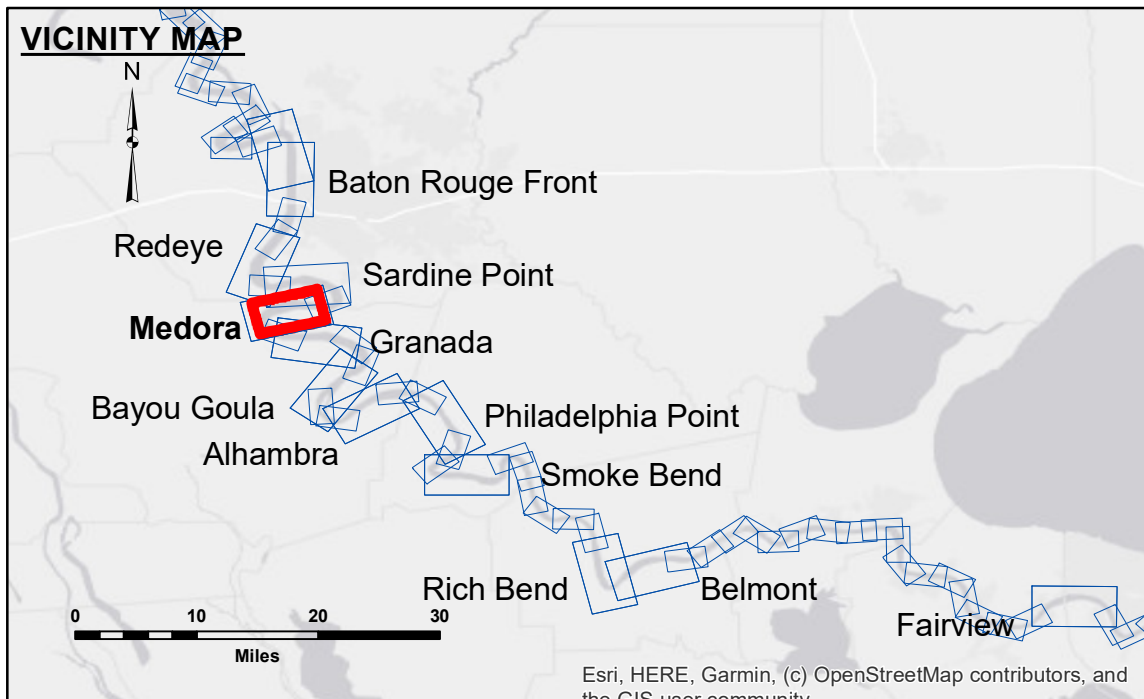


DISCLAIMER
 Distribution Liability: The data represents the results of data collection/processing for a specific US Army Corps of Engineers project. It is only valid for its intended use, content, time and accuracy specifications. The user is responsible for the results of the application of the data for other than its intended purpose.
 Data: Constant Hydrographic survey data is subject to change rapidly due to several factors including but not limited to changing hydrographic conditions when developing after the date of the survey. The user is responsible for the results of the application of these data to other than the intended purpose.
 The information depicted on this map represents the results of a survey conducted on the date of the survey. It is not intended to represent the general condition existing at that time.

U.S. ARMY CORPS OF ENGINEERS NEW ORLEANS DISTRICT		
Surveyed By: RYLAND/ADAMS	Plotted By: BD	Checked By: AC
Submitted:	Recommended: Chief, Survey Section	Approved: Chief, Waterways Maintenance Section

MISSISSIPPI RIVER - B. R. TO GULF
MEDORA CROSSING
MD_08_MED_20190726_CS
 26 July 2019



LEGEND		DIKE ELEVATION	
--- Federal Navigation Channel	○ Cable Area	1	-10 NGVD
— Federal Navigation Center Line	□ Placement Area	2	OR -12.1 LWRP
— As-built Pipeline/Cable	□ Anchorage Area	3	-4 NGVD
..... Unconfirmed Pipeline/Cable	⊗ Obstruction Point		OR -5.1 LWRP
— Project Depth Contour	⚓ Wrecks-Submerged		2 NGVD
	★ Beacon, General		OR -0.1 LWRP
	◆ Red Navigation Buoy		
	◆ Green Navigation Buoy		
	□ Borrow Area		
	● Shoalest Sounding**		
	0' and above		
	0' to -5'		
	-5' to -10'		
	-10' to -20'		
	-20' to -30'		
	-30' to -35'		
	-35' to -40'		
	-40' to -45'		
	-45' and below		

NOTES:

Horizontal Coordinate System:
 North American Datum of 1983 (NAD83), projected to the State Plane Coordinate System (SPCS), Louisiana South Zone. Distance units in U.S. Survey Feet.

Vertical Datum:
 Soundings are shown in feet and indicate depths below Low Water Reference Plane 2007 (NAVD).

Distances on the Mississippi River, above and below Head of Passes are shown at 1 mile intervals.

The location of navigation aids are based on and provided by the U.S. Coast Guard and USACE crew.

2015 Aerial Photography data source: NAIP, USDA-FSA-APFO Aerial Photography Field Office.

Reference is N.O.A. Navigation Chart No. 11370.

** Shoalest Sounding per Quarter per Reach.

*** High frequency (200 kHz) survey data represents the first signal return at a sounding location and will include suspended solids, known as "fluff", if present. Low frequency (20 kHz) survey data normally penetrates through this "fluff" layer to depict elevations of consolidated bottom material. Low frequency accuracies may vary depending on channel conditions and fathometer settings.

LWRP: 2.1
 Gage Reading: BR:38.5D:27.1 USED:35.0 NAVD
 Sea Conditions: CALM
 Vessel Name: OB-189
 Survey Type: CONDITION
 Sounding Frequency***: HIGH

Feet
 0 500 1,000 1,500 2,000 2,500

Sheet Reference Number
8 of 97