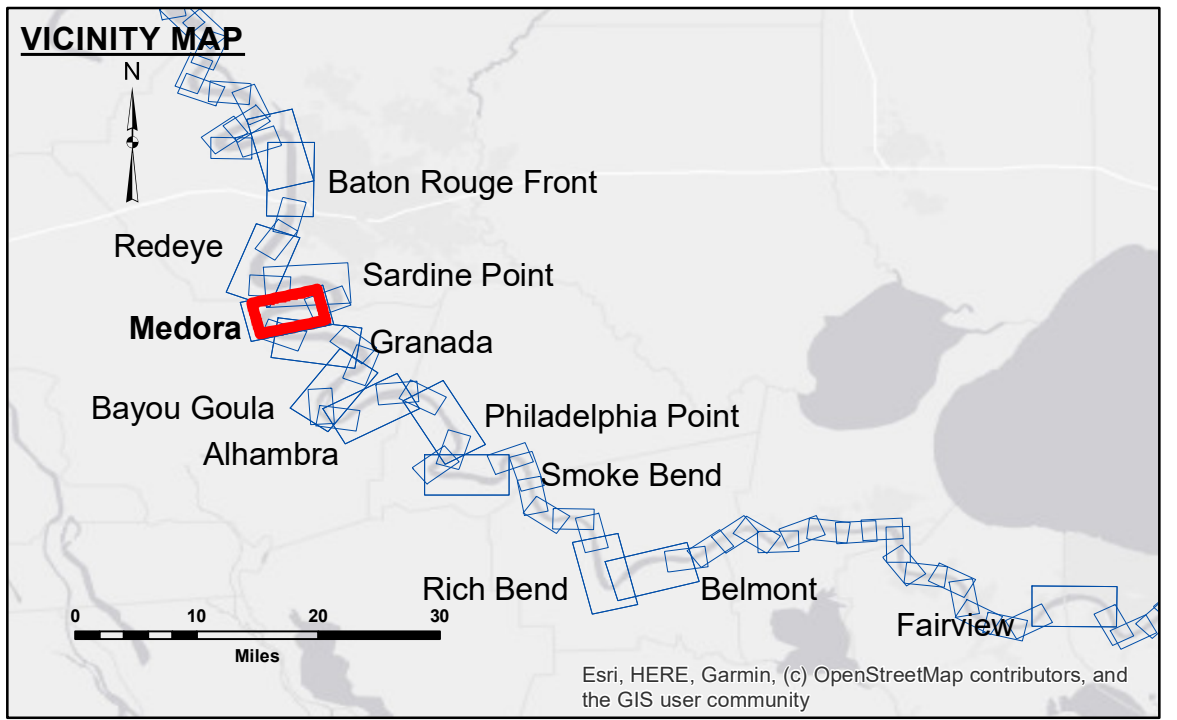


DISCLAIMER
 The information depicted on this map represents the results of a survey conducted by the United States Army Corps of Engineers. The data represents the results of data collection and processing for a specific US Army Corps of Engineers project. It is not intended for use in any other project, and its use is limited to the project for which it was collected. The user is responsible for the accuracy, completeness, and reliability of the data for its intended use. The user is not to be held liable for any damages, including consequential damages, arising from the use of this data. The user is not to be held liable for any damages, including consequential damages, arising from the use of this data. The user is not to be held liable for any damages, including consequential damages, arising from the use of this data.

U.S. ARMY CORPS OF ENGINEERS NEW ORLEANS DISTRICT		
Submitted:	Surveyed By: D/S/S/PS	Plotted By: AO
Recommended:	Chief, Survey Section	Checked By: AC
Approved:	Chief, Waterways Maintenance Section	

MISSISSIPPI RIVER - B.R. TO GULF
MEDORA CROSSING
MD_08_MED_20190807_CS
07 August 2019



LEGEND	
--- Federal Navigation Channel	● Cable Area
— Federal Navigation Center Line	■ Placement Area
— As-built Pipeline/Cable	□ Anchorage Area
..... Unconfirmed Pipeline/Cable	⊗ Obstruction Point
— Project Depth Contour	✈ Wrecks-Submerged
□ Borrow Area	★ Beacon, General
● Shoalest Sounding**	◆ Red Navigation Buoy
★ Beacon, General	◆ Green Navigation Buoy
◆ Red Navigation Buoy	■ 0' and above
◆ Green Navigation Buoy	■ 0' to -5'
	■ -5' to -10'
	■ -10' to -20'
	■ -20' to -30'
	■ -30' to -35'
	■ -35' to -40'
	■ -40' to -45'
	■ -45' and below

NOTES:

Horizontal Coordinate System:
 North American Datum of 1983 (NAD83), projected to the State Plane Coordinate System (SPCS), Louisiana South Zone. Distance units in U.S. Survey Feet.

Vertical Datum:
 Soundings are shown in feet and indicate depths below Low Water Reference Plane 2007 (NAVD).

Distances on the Mississippi River, above and below Head of Passes are shown at 1 mile intervals.

The location of navigation aids are based on and provided by the U.S. Coast Guard and USACE crew.

2015 Aerial Photography data source: NAIP, USDA-FSA-APFO Aerial Photography Field Office.

Reference is N.O.A. Navigation Chart No. 11370.

** Shoalest Sounding per Quarter per Reach.

*** High frequency (200 kHz) survey data represents the first signal return at a sounding location and will include suspended solids, known as "fluff", if present. Low frequency (20 kHz) survey data normally penetrates through this "fluff" layer to depict elevations of consolidated bottom material. Low frequency accuracies may vary depending on channel conditions and fathometer settings.

LWRP: 2.1
 Gage Reading: BR:33.0D:22.6 USED:29.8 NAVD
 Sea Conditions: SMOOTH
 Vessel Name: LAFOURCHE
 Survey Type: CS
 Sounding Frequency***: HIGH

Scale: 0 500 1,000 1,500 2,000 2,500 Feet

Sheet Reference Number
8 of 97