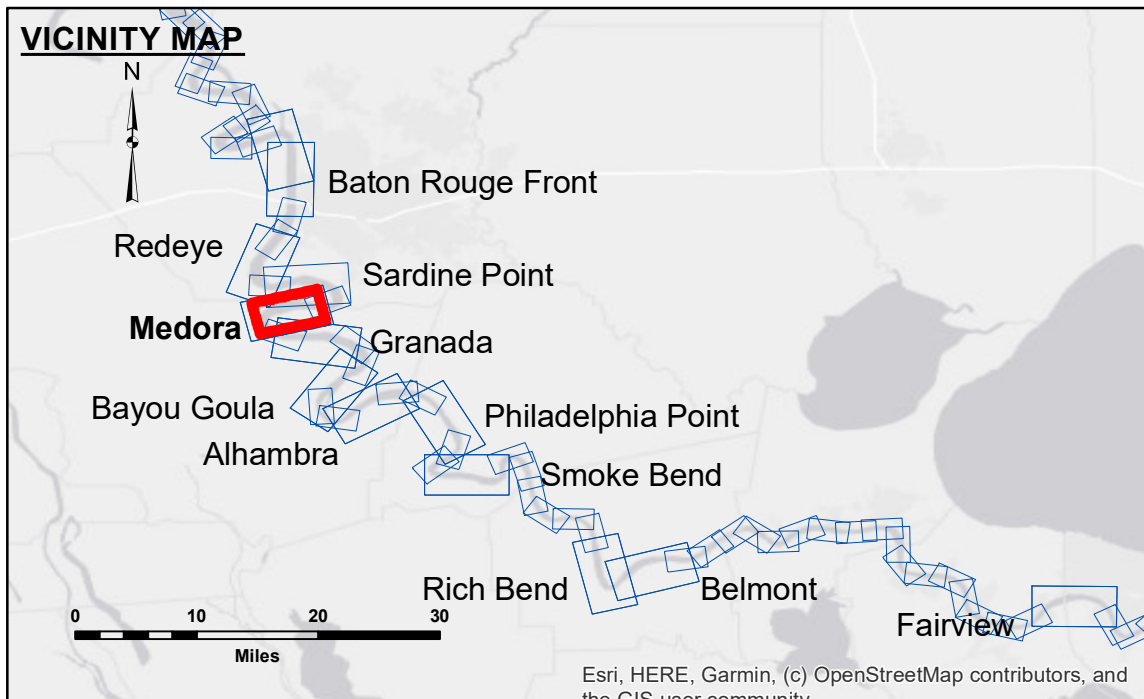


DISCLAIMER
 The information depicted on this map represents the results of a survey conducted by the United States Army Corps of Engineers. The data was collected using a surveying instrument and is subject to the accuracy of the instrument and the skill of the operator. The user is responsible for the accuracy of the data. The Corps of Engineers does not warrant the accuracy of the data for any purpose other than that for which it was collected. The Corps of Engineers does not assume any liability for any damage or loss resulting from the use of this information. The Corps of Engineers does not assume any liability for any damage or loss resulting from the use of this information. The Corps of Engineers does not assume any liability for any damage or loss resulting from the use of this information.

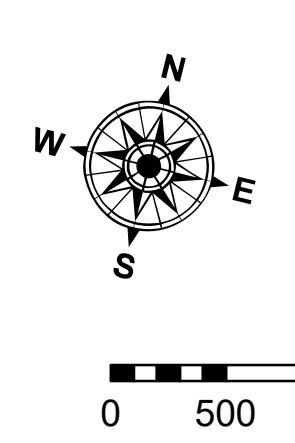
U.S. ARMY CORPS OF ENGINEERS NEW ORLEANS DISTRICT	
Submitted:	Checked By: AC
Recommended:	Checked By: AC
Approved:	Checked By: AC

MISSISSIPPI RIVER - B. R. TO GULF
MEDORA CROSSING
MD_08_MED_20190826_CS
26 August 2019

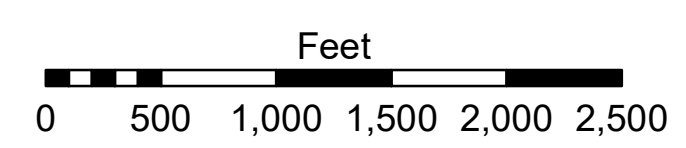


LEGEND	
--- Federal Navigation Channel	● Cable Area
— Federal Navigation Center Line	■ Placement Area
— As-built Pipeline/Cable	□ Anchorage Area
..... Unconfirmed Pipeline/Cable	⊗ Obstruction Point
— Project Depth Contour	✈ Wrecks-Submerged
□ Borrow Area	★ Beacon, General
● Shoalest Sounding**	◆ Red Navigation Buoy
★ Beacon, General	◆ Green Navigation Buoy

0' and above	0' to -5'
-5' to -10'	-10' to -20'
-20' to -30'	-30' to -35'
-35' to -40'	-40' to -45'
-45' and below	



LWRP: 2.1
 Gage Reading: BR:18.3D:10.4 USED:15.9 NAVD
 Sea Conditions: SMOOTH
 Vessel Name: OB189
 Survey Type: CS
 Sounding Frequency***: HIGH



NOTES:
 Horizontal Coordinate System:
 North American Datum of 1983 (NAD83), projected to the State Plane Coordinate System (SPCS), Louisiana South Zone. Distance units in U.S. Survey Feet.
 Vertical Datum:
 Soundings are shown in feet and indicate depths below Low Water Reference Plane 2007 (NAVD).
 Distances on the Mississippi River, above and below Head of Passes are shown at 1 mile intervals.
 The location of navigation aids are base on and provided by the U.S. Coast Guard and USACE crew.
 2015 Aerial Photography data source: NAIP, USDA-FSA-APFO Aerial Photography Field Office.
 Reference is N.O.A. Navigation Chart No. 11370.
 ** Shoalest Sounding per Quarter per Reach.
 *** High frequency (200 kHz) survey data represents the first signal return at a sounding location and will include suspended solids, known as "fluff", if present. Low frequency (20 kHz) survey data normally penetrates through this "fluff" layer to depict elevations of consolidated bottom material. Low frequency accuracies may vary depending on channel conditions and fathometer settings.

Sheet Reference Number
8 of 97