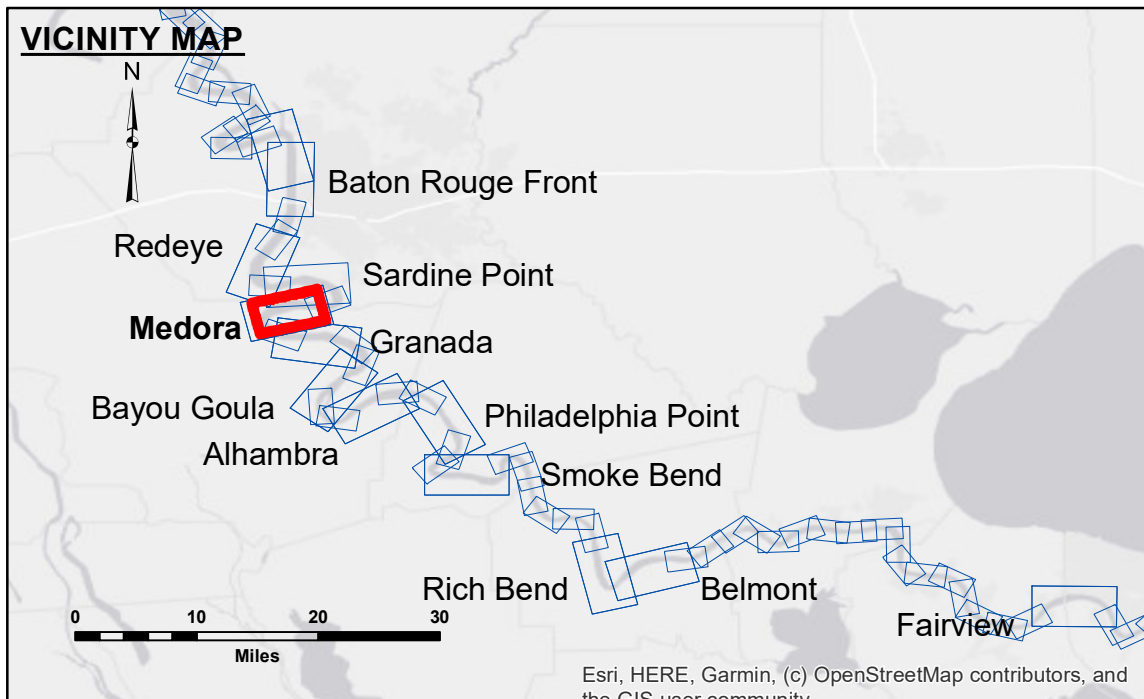


**DISCLAIMER**  
 The information depicted on this map represents the results of a survey conducted by the United States Army Corps of Engineers. The data represents the results of data collection/processing for a specific US Army Corps of Engineers project. It is only valid for its intended use, control, time and accuracy specifications. The user is responsible for the results of the application of the data for other than its intended purpose.  
 Data Constants: Hydrographic survey data is subject to change rapidly due to several factors including but not limited to changing hydrological conditions when developed after the date of the survey. The user is responsible for the date of the survey data used. The user is responsible for the date of the survey data used. The user is responsible for the date of the survey data used.  
 The information depicted on this map represents the results of a survey conducted by the United States Army Corps of Engineers. The data represents the results of data collection/processing for a specific US Army Corps of Engineers project. It is only valid for its intended use, control, time and accuracy specifications. The user is responsible for the results of the application of the data for other than its intended purpose.

U.S. ARMY CORPS OF ENGINEERS NEW ORLEANS DISTRICT		
Submitted:	Surveyed By: RYLAND/ADAMS	Plotted By: AO
Recommended:	Chief, Survey Section	Checked By: AO
Approved:	Chief, Waterways Maintenance Section	

**MISSISSIPPI RIVER - B.R. TO GULF**  
**MEDORA CROSSING**  
**MD\_08\_MED\_20191024\_CS**  
**24 October 2019**



LEGEND		DIKE ELEVATION	
--- Federal Navigation Channel	○ Cable Area	1	-10 NGVD
— Federal Navigation Center Line	□ Placement Area	2	OR -12.1 LWRP
— As-built Pipeline/Cable	□ Anchorage Area	3	-4 NGVD
..... Unconfirmed Pipeline/Cable	⊗ Obstruction Point		OR -5.1 LWRP
— Project Depth Contour	⚓ Wrecks-Submerged		2 NGVD
	★ Beacon, General		OR -0.1 LWRP
	◆ Red Navigation Buoy		
	◆ Green Navigation Buoy		
	□ Borrow Area		
	● Shoalest Sounding**		

**NOTES:**

Horizontal Coordinate System:  
 North American Datum of 1983 (NAD83), projected to the State Plane Coordinate System (SPCS), Louisiana South Zone. Distance units in U.S. Survey Feet.

Vertical Datum:  
 Soundings are shown in feet and indicate depths below Low Water Reference Plane 2007 (NAVD).

Distances on the Mississippi River, above and below Head of Passes are shown at 1 mile intervals.

The location of navigation aids are based on and provided by the U.S. Coast Guard and USACE crew.  
 2015 Aerial Photography data source: NAIP, USDA-FSA-APFO Aerial Photography Field Office.

Reference is N.O.A. Navigation Chart No. 11370.

\*\* Shoalest Sounding per Quarter per Reach.

\*\*\* High frequency (200 kHz) survey data represents the first signal return at a sounding location and will include suspended solids, known as "fluff", if present. Low frequency (20 kHz) survey data normally penetrates through this "fluff" layer to depict elevations of consolidated bottom material. Low frequency accuracies may vary depending on channel conditions and bathymeter settings.

LWRP: 2.1  
 Gage Reading: BR:20.8D:12.6 USED: 18.30 NAVD  
 Sea Conditions: CALM  
 Vessel Name: M/V VALENTOUR  
 Survey Type: CONDITION  
 Sounding Frequency\*\*\*: HIGH

Scale: 0 500 1,000 1,500 2,000 2,500 Feet

**Sheet Reference Number**  
**8 of 97**