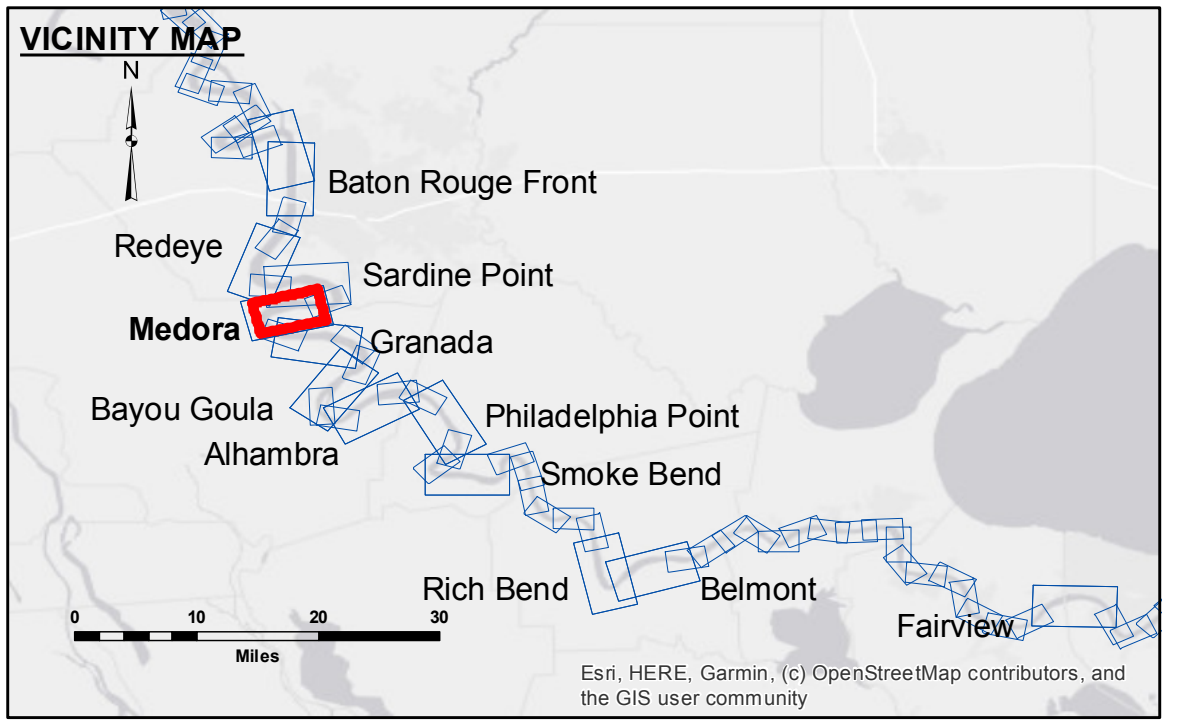


DISCLAIMER: The data represents the results of data collection for a specific project. The data is not intended for use in any other project. The user is responsible for the results and accuracy of the data. The application of the data for other than its intended purpose is not recommended. The user is responsible for the results and accuracy of the data. The application of the data for other than its intended purpose is not recommended. The user is responsible for the results and accuracy of the data. The application of the data for other than its intended purpose is not recommended.

Submitted:	Checked By:	AC
Recommended:	Checked By:	AC
Approved:	Checked By:	AC

MISSISSIPPI RIVER - B. R. TO GULF
MEDORA CROSSING
MD_08_MED_20200324_CS
24 March 2020



LEGEND		0' and above	
--- Federal Navigation Channel	○ Cable Area	0' to -5'	
— Federal Navigation Center Line	□ Placement Area	-5' to -10'	
— As-built Pipeline/Cable	□ Anchorage Area	-10' to -20'	
..... Unconfirmed Pipeline/Cable	⊗ Obstruction Point	-20' to -30'	
— Project Depth Contour	⚓ Wrecks-Submerged	-30' to -35'	
	★ Beacon, General	-35' to -40'	
	◆ Red Navigation Buoy	-40' to -45'	
	◆ Green Navigation Buoy	-45' and below	
	□ Borrow Area		
	● Shoalest Sounding**		

NOTES:

Horizontal Coordinate System:
North American Datum of 1983 (NAD83), projected to the State Plane Coordinate System (SPCS), Louisiana South Zone. Distance units in U.S. Survey Feet.

Vertical Datum:
Soundings are shown in feet and indicate depths below Low Water Reference Plane 2007 (NAVD). Distances on the Mississippi River, above and below Head of Passes are shown at 1 mile intervals.

The location of navigation aids are base on and provided by the U.S. Coast Guard and USACE crew. 2015 Aerial Photography data source: NAIP, USDA-FSA-APFO Aerial Photography Field Office.

Reference is N.O.A. Navigation Chart No. 11370.

** Shoalest Sounding per Quarter per Reach.

*** High frequency (200 kHz) survey data represents the first signal return at a sounding location and will include suspended solids, known as "fluff", if present. Low frequency (20 kHz) survey data normally penetrates through this "fluff" layer to depict elevations of consolidated bottom material. Low frequency accuracies may vary depending on channel conditions and fathometer settings.

LWRP: 2.1
Gage Reading: BR:37.6D;26.8 USED:34.2 NAVD
Sea Conditions: SMOOTH
Vessel Name: LAFOURCHE
Survey Type: CS
Sounding Frequency***: HIGH

Feet
0 500 1,000 1,500 2,000 2,500

Sheet Reference Number
8 of 97

Revision Number:
4.0-20190702