

**DISCLAIMER:** The information depicted on this map represents the results of a survey conducted by the U.S. Army Corps of Engineers. The data represents the results of data collected for a specific purpose and is not intended for use for any other purpose. The user is responsible for the accuracy, completeness, reliability, usability, or suitability of the information for any particular purpose. The user is responsible for the accuracy, completeness, reliability, usability, or suitability of the information for any particular purpose. The user is responsible for the accuracy, completeness, reliability, usability, or suitability of the information for any particular purpose. The user is responsible for the accuracy, completeness, reliability, usability, or suitability of the information for any particular purpose.

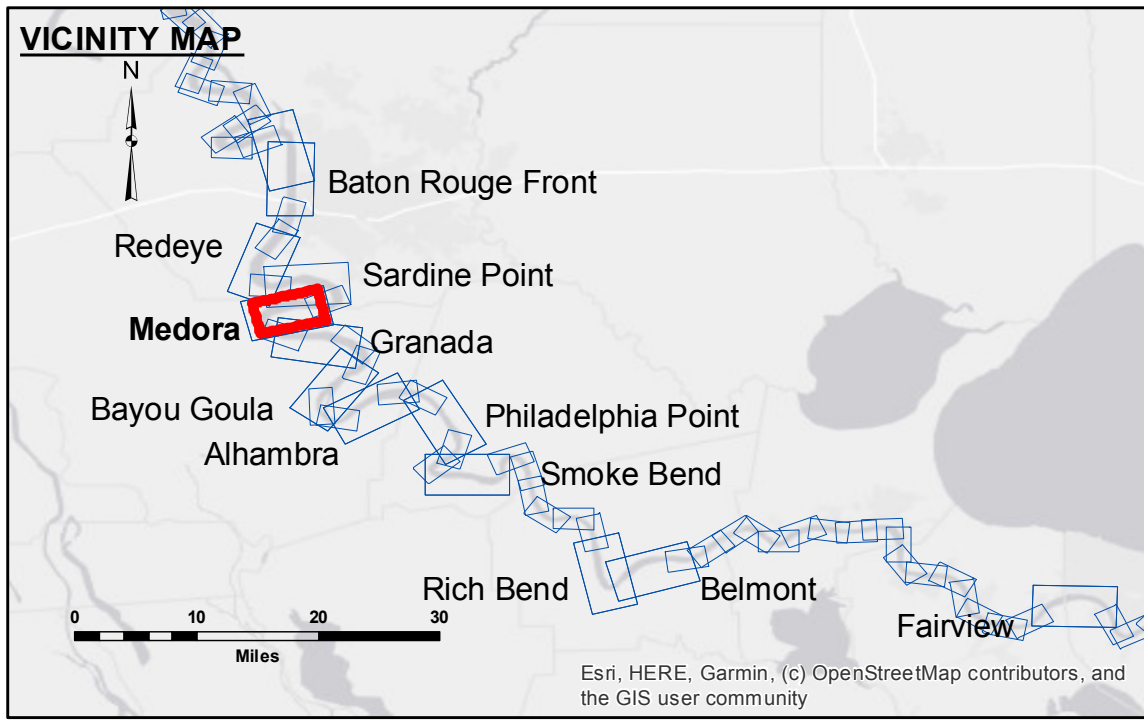
Submitted:	Surveyed By:	D/S/S/PS
Recommended:	Plotted By:	BD
Approved:	Checked By:	AC

U.S. ARMY CORPS OF ENGINEERS  
NEW ORLEANS DISTRICT

**MISSISSIPPI RIVER - B. R. TO GULF**  
**MEDORA CROSSING**  
**MD\_08\_MED\_20200407\_BD**  
**07 April 2020**

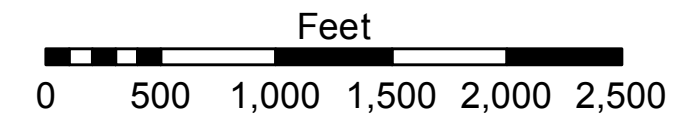
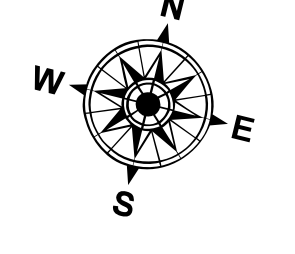
**Sheet Reference Number**  
**8 of 97**

Revision Number:  
4.0-20190702



LEGEND			
--- Federal Navigation Channel	○ Cable Area	□ Borrow Area	0' and above
— Federal Navigation Center Line	▭ Placement Area	● Shoalest Sounding**	0' to -5'
— As-built Pipeline/Cable	⊠ Anchorage Area	☆ Beacon, General	-5' to -10'
⋯ Unconfirmed Pipeline/Cable	⊗ Obstruction Point	◆ Red Navigation Buoy	-10' to -20'
— Project Depth Contour	⚓ Wrecks-Submerged	◆ Green Navigation Buoy	-20' to -30'
			-30' to -35'
			-35' to -40'
			-40' to -45'
			-45' and below

LWRP:	2.1
Gage Reading:	BR:41.5 D:30.1 USED:38.0 NAVD
Sea Conditions:	CALM
Vessel Name:	M/V LAFOURCHE
Survey Type:	CONDITION
Sounding Frequency***:	HIGH



**NOTES:**

Horizontal Coordinate System:  
North American Datum of 1983 (NAD83), projected to the State Plane Coordinate System (SPCS), Louisiana South Zone. Distance units in U.S. Survey Feet.

Vertical Datum:  
Soundings are shown in feet and indicate depths below Low Water Reference Plane 2007 (NAVD).

Distances on the Mississippi River, above and below Head of Passes are shown at 1 mile intervals.

The location of navigation aids are base on and provided by the U.S. Coast Guard and USACE crew.

2015 Aerial Photography data source: NAIP, USDA-FSA-APFO Aerial Photography Field Office.

Reference is N.O.A. Navigation Chart No. 11370.

\*\* Shoalest Sounding per Quarter per Reach.

\*\*\* High frequency (200 kHz) survey data represents the first signal return at a sounding location and will include suspended solids, known as "fluff", if present. Low frequency (20 kHz) survey data normally penetrates through this "fluff" layer to depict elevations of consolidated bottom material. Low frequency accuracies may vary depending on channel conditions and fathometer settings.