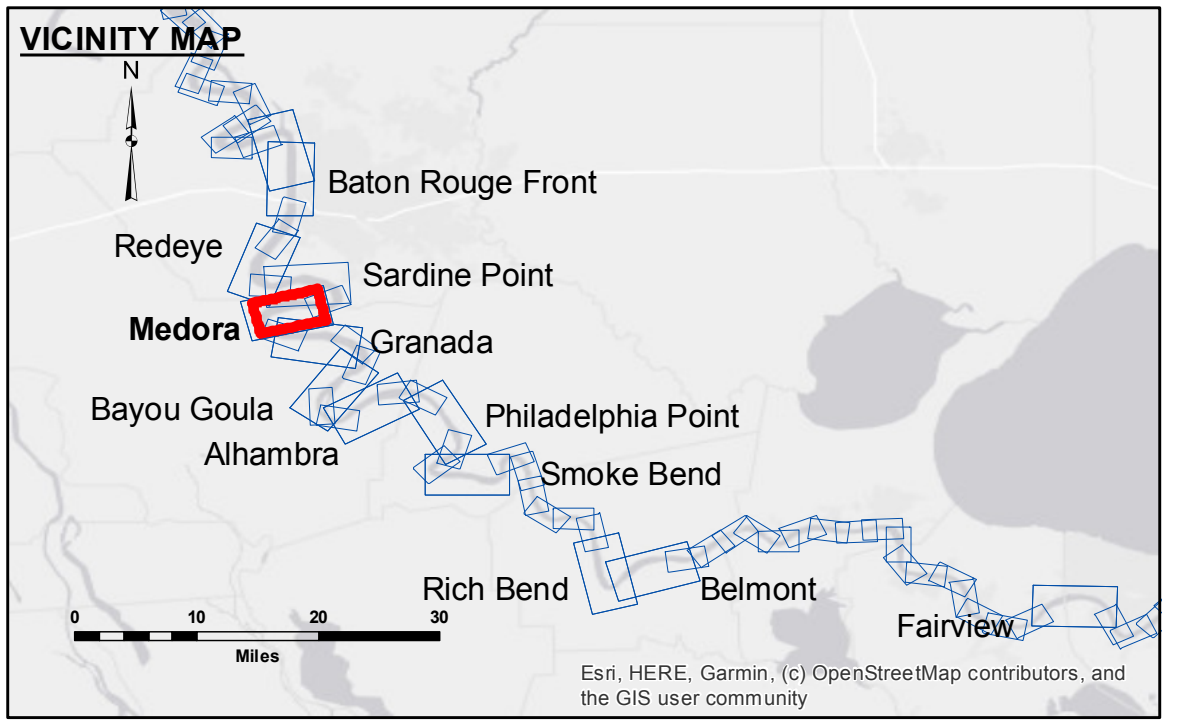


DISCLAIMER: The data represents the results of data collection processing for a specific US Army Corps of Engineers project. The data is only valid for its intended use, and accuracy is not guaranteed. The user is responsible for the results. The application of the data for other than its intended purpose is not recommended. Hydrographic survey data is subject to change due to several factors including but not limited to dredging, sedimentation, and channel migration. The US Army Corps of Engineers does not assume any liability for changes in the hydrographical conditions when developed after the date of this report. Product maintainers should not rely solely upon it.

Submitted:	Surveyed By: DJS/SFS
Recommended: Chief Survey Section	Plotted By: BD
Approved: Chief Waterways Maintenance Section	Checked By: AC

MISSISSIPPI RIVER - B. R. TO GULF
MEDORA CROSSING
MD_08_MED_20200811_AD
11 August 2020



LEGEND

--- Federal Navigation Channel	○ Cable Area	□ Borrow Area	■ 0' and above
— Federal Navigation Center Line	■ Placement Area	● Shoalest Sounding**	■ 0' to -5'
— As-built Pipeline/Cable	□ Anchorage Area	☆ Beacon, General	■ -5' to -10'
..... Unconfirmed Pipeline/Cable	⊗ Obstruction Point	◆ Red Navigation Buoy	■ -10' to -20'
— Project Depth Contour	⚓ Wrecks-Submerged	◆ Green Navigation Buoy	■ -20' to -30'
			■ -30' to -35'
			■ -35' to -40'
			■ -40' to -45'
			■ -45' and below

NOTES:

Horizontal Coordinate System:
 North American Datum of 1983 (NAD83), projected to the State Plane Coordinate System (SPCS), Louisiana South Zone. Distance units in U.S. Survey Feet.

Vertical Datum:
 Soundings are shown in feet and indicate depths below Low Water Reference Plane 2007 (NAVD).
 Distances on the Mississippi River, above and below Head of Passes are shown at 1 mile intervals.

The location of navigation aids are base on and provided by the U.S. Coast Guard and USACE crew.
 2015 Aerial Photography data source: NAIP, USDA-FSA-APFO Aerial Photography Field Office.

Reference is N.O.A. Navigation Chart No. 11370.
 ** Shoalest Sounding per Quarter per Reach.

*** High frequency (200 kHz) survey data represents the first signal return at a sounding location and will include suspended solids, known as "fluff", if present. Low frequency (20 kHz) survey data normally penetrates through this "fluff" layer to depict elevations of consolidated bottom material. Low frequency accuracies may vary depending on channel conditions and fathometer settings.

LWRP: 2.1
 Gage Reading: BR:17.1 D:9.1 USED:14.6 NAVD
 Sea Conditions: CALM
 Vessel Name: M/V LAFORCHE
 Survey Type: AD
 Sounding Frequency***: HIGH

Sheet Reference Number
8 of 97

Revision Number:
 4.1-20191105