

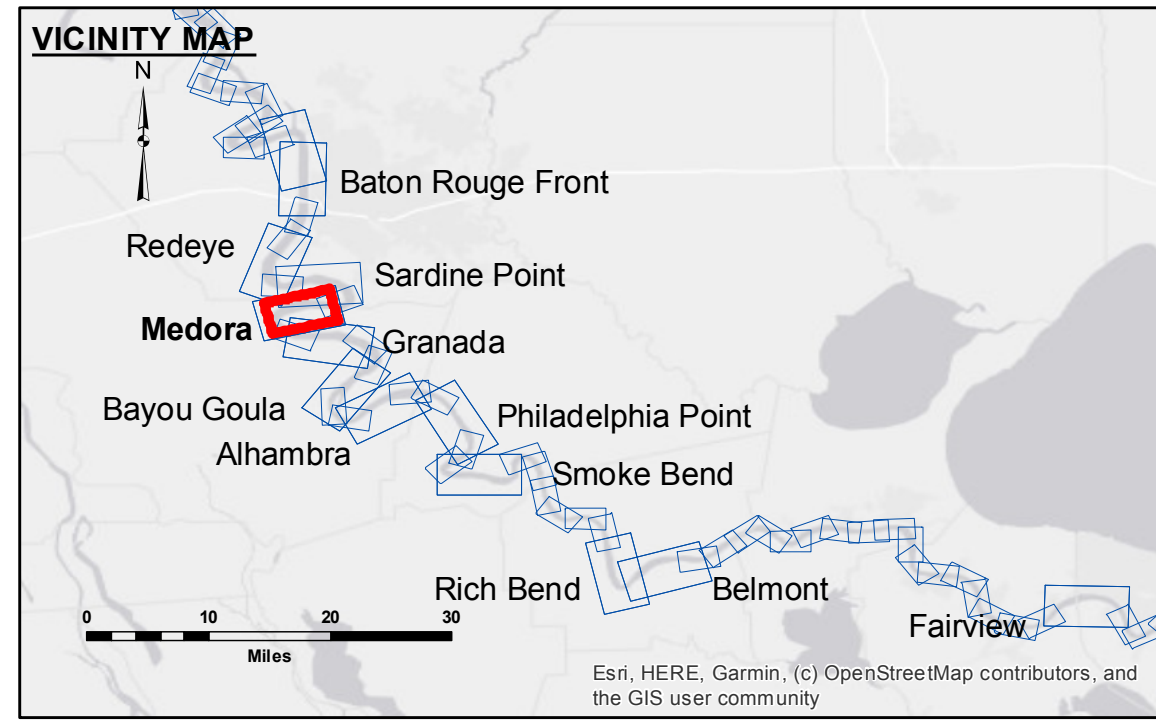
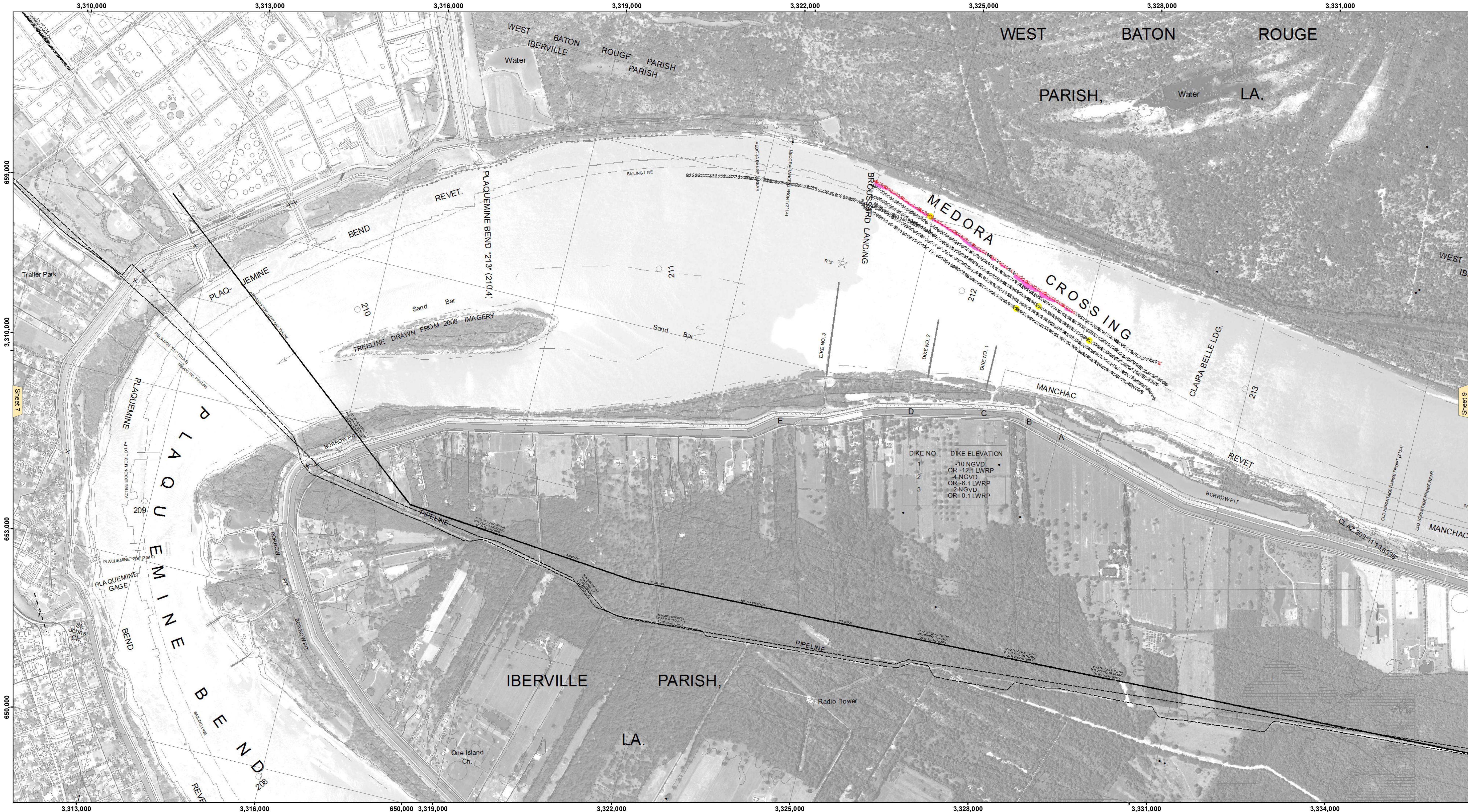


DISCLAIMER: The data represented on this map represents the results of a specific US Army Corps of Engineers survey and is only valid for its intended use, control, time and accuracy specifications. The user is responsible for the results of any application of the data for other than its intended purpose. Data Corrections: Hydrographic survey data is subject to change rapidly due to several factors including but not limited to dredging operations, changes in channel conditions, etc. The Corps of Engineers does not assume responsibility for changes in the hydrographic conditions when developed after the date of the survey. The information depicted on this map represents the results of a survey and is not intended to be used for any other purpose. The information is provided for your information and is not intended to represent the general condition existing at this time.

U.S. ARMY CORPS OF ENGINEERS NEW ORLEANS DISTRICT		
Submitted:	Surveyed By: DJS/SR	Plotted By: AO
Recommended: Chert Survey Section	Checked By: AO	Checked By: AO
Approved: Chert Waterways Maintenance Section		

MISSISSIPPI RIVER - B. R. TO GULF
MEDORA CROSSING
MD_08_MED_20200902_PR
02 September 2020

Sheet Reference Number
8 of 97



LEGEND

--- Federal Navigation Channel	● Cable Area	□ Borrow Area	■ 0' and above
— Federal Navigation Center Line	■ Placement Area	● Shoalest Sounding**	■ 0' to -5'
— As-built Pipeline/Cable	□ Anchorage Area	☆ Beacon, General	■ -5' to -10'
..... Unconfirmed Pipeline/Cable	⊗ Obstruction Point	◆ Red Navigation Buoy	■ -10' to -20'
— Project Depth Contour	✝ Wrecks-Submerged	◆ Green Navigation Buoy	■ -20' to -30'
			■ -30' to -35'
			■ -35' to -40'
			■ -40' to -45'
			■ -45' and below

NOTES:

Horizontal Coordinate System:
North American Datum of 1983 (NAD83), projected to the State Plane Coordinate System (SPCS), Louisiana South Zone. Distance units in U.S. Survey Feet.

Vertical Datum:
Soundings are shown in feet and indicate depths below Low Water Reference Plane 2007 (NAVD). Distances on the Mississippi River, above and below Head of Passes are shown at 1 mile intervals.

The location of navigation aids are base on and provided by the U.S. Coast Guard and USACE crew. 2015 Aerial Photography data source: NAIP, USDA-FSA-APFO Aerial Photography Field Office.

Reference is N.O.A. Navigation Chart No. 11370.

** Shoalest Sounding per Quarter per Reach.

*** High frequency (200 kHz) survey data represents the first signal return at a sounding location and will include suspended solids, known as "fluff", if present. Low frequency (20 kHz) survey data normally penetrates through this "fluff" layer to depict elevations of consolidated bottom material. Low frequency accuracies may vary depending on channel conditions and fathometer settings.

LWRP: 2.1
 Gage Reading: BR:11.7:5.8 USED:9.9 NAVD
 Sea Conditions: SMOOTH
 Vessel Name: LAFORCHE
 Survey Type: PR
 Sounding Frequency***: HIGH

NOTES:

Horizontal Coordinate System:
North American Datum of 1983 (NAD83), projected to the State Plane Coordinate System (SPCS), Louisiana South Zone. Distance units in U.S. Survey Feet.

Vertical Datum:
Soundings are shown in feet and indicate depths below Low Water Reference Plane 2007 (NAVD). Distances on the Mississippi River, above and below Head of Passes are shown at 1 mile intervals.

The location of navigation aids are base on and provided by the U.S. Coast Guard and USACE crew. 2015 Aerial Photography data source: NAIP, USDA-FSA-APFO Aerial Photography Field Office.

Reference is N.O.A. Navigation Chart No. 11370.

** Shoalest Sounding per Quarter per Reach.

*** High frequency (200 kHz) survey data represents the first signal return at a sounding location and will include suspended solids, known as "fluff", if present. Low frequency (20 kHz) survey data normally penetrates through this "fluff" layer to depict elevations of consolidated bottom material. Low frequency accuracies may vary depending on channel conditions and fathometer settings.