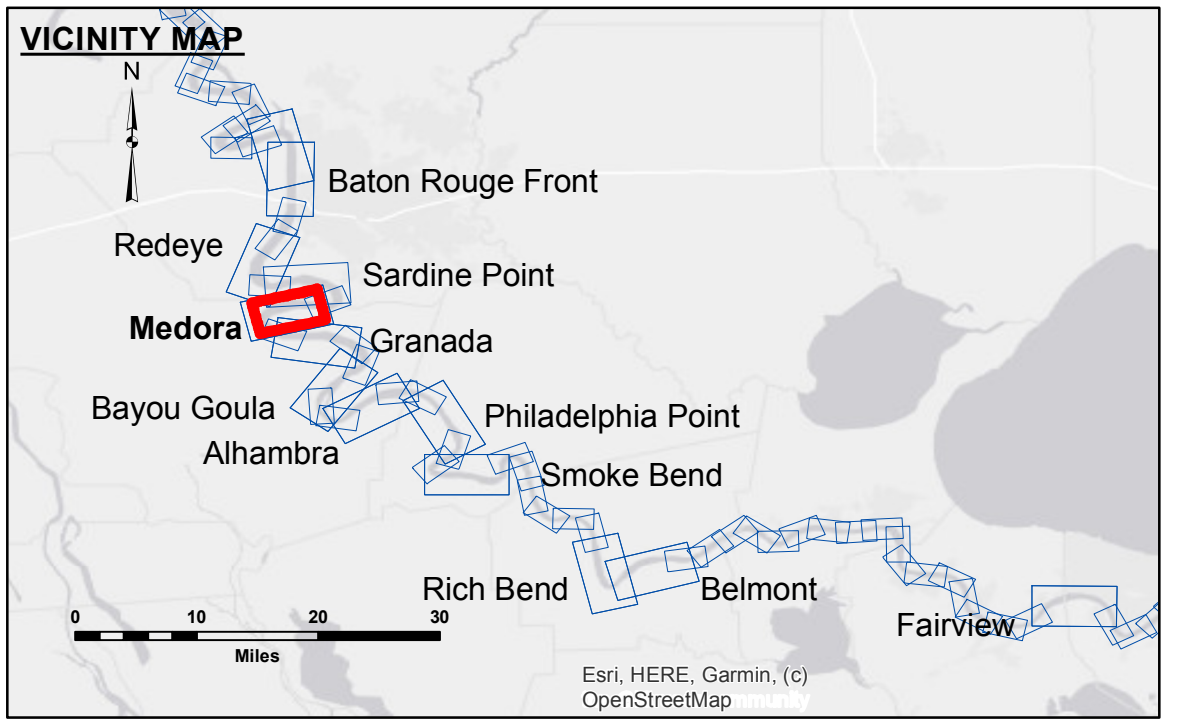


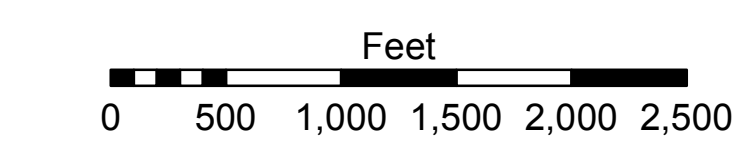
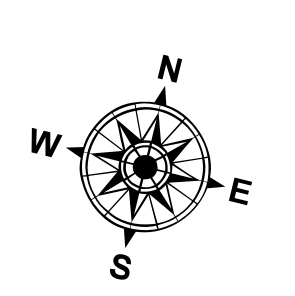
DISCLAIMER
 The information depicted on this map represents the results of a survey conducted by the U.S. Army Corps of Engineers. The data represents the results of data collection and processing for a specific U.S. Army Corps of Engineers project. It is only valid for its intended use, context, time and accuracy specifications. The user is responsible for the results of the application of the data for other than its intended purpose.
 Data Constraints: Hydrographic survey data is subject to change rapidly due to several factors including, but not limited to, encroaching vegetation, shifting sandbars, and changes in channel conditions. The U.S. Army Corps of Engineers accepts no responsibility for changes in the hydrographical conditions which develop after the date of the survey. Prudent mariners should not rely solely upon this information.

U.S. ARMY CORPS OF ENGINEERS NEW ORLEANS DISTRICT		
Submitted:	Surveyed By: DS/SPS	Plotted By: BD
Recommended: Chief, Survey Section	Checked By: AC	Checked By: AC
Approved:	Chief, Waterways Maintenance Section	

MISSISSIPPI RIVER - B. R. TO GULF
MEDORA CROSSING
MD_08_MED_20210825_CS
25 August 2021



LEGEND		DIKE ELEVATION	
--- Federal Navigation Channel	○ Cable Area	1 -10 NGVD	0' and above
— Federal Navigation Center Line	□ Placement Area	OR -12.1 LWRP	0' to -5'
— As-built Pipeline/Cable	□ Anchorage Area	2 -4 NGVD	-5' to -10'
..... Unconfirmed Pipeline/Cable	⊗ Obstruction Point	OR -6.1 LWRP	-10' to -20'
— Project Depth Contour	✶ Wrecks-Submerged	3 2 NGVD	-20' to -30'
		OR -0.1 LWRP	-30' to -35'
			-35' to -40'
			-40' to -45'
			-45' and below



LWRP: 2.1
 Gage Reading: BR:11.1 D:5.7 USED:9.4 NAVD
 Sea Conditions: CALM
 Vessel Name: OB-189
 Survey Type: CS
 Sounding Frequency***: HIGH

NOTES:
 Horizontal Coordinate System:
 North American Datum of 1983 (NAD83), projected to the State Plane Coordinate System (SPCS), Louisiana South Zone. Distance units in U.S. Survey Feet.
 Vertical Datum:
 Soundings are shown in feet and indicate depths below Low Water Reference Plane 2007 (NAVD).
 Distances on the Mississippi River, above and below Head of Passes are shown at 1 mile intervals.
 The location of navigation aids are based on and provided by the U.S. Coast Guard and USACE crew.
 2015 Aerial Photography data source: NAIP, USDA-FSA-APFO Aerial Photography Field Office.
 Reference is N.O.A. Navigation Chart No. 11370.
 *** Shoalest Sounding per Quarter per Reach.
 *** High frequency (200 kHz) survey data represents the first signal return at a sounding location and will include suspended solids, known as "fluff", if present. Low frequency (20 kHz) survey data normally penetrates through this "fluff" layer to depict elevations of consolidated bottom material. Low frequency accuracies may vary depending on channel conditions and bathymeter settings.

Sheet Reference Number
8 of 97