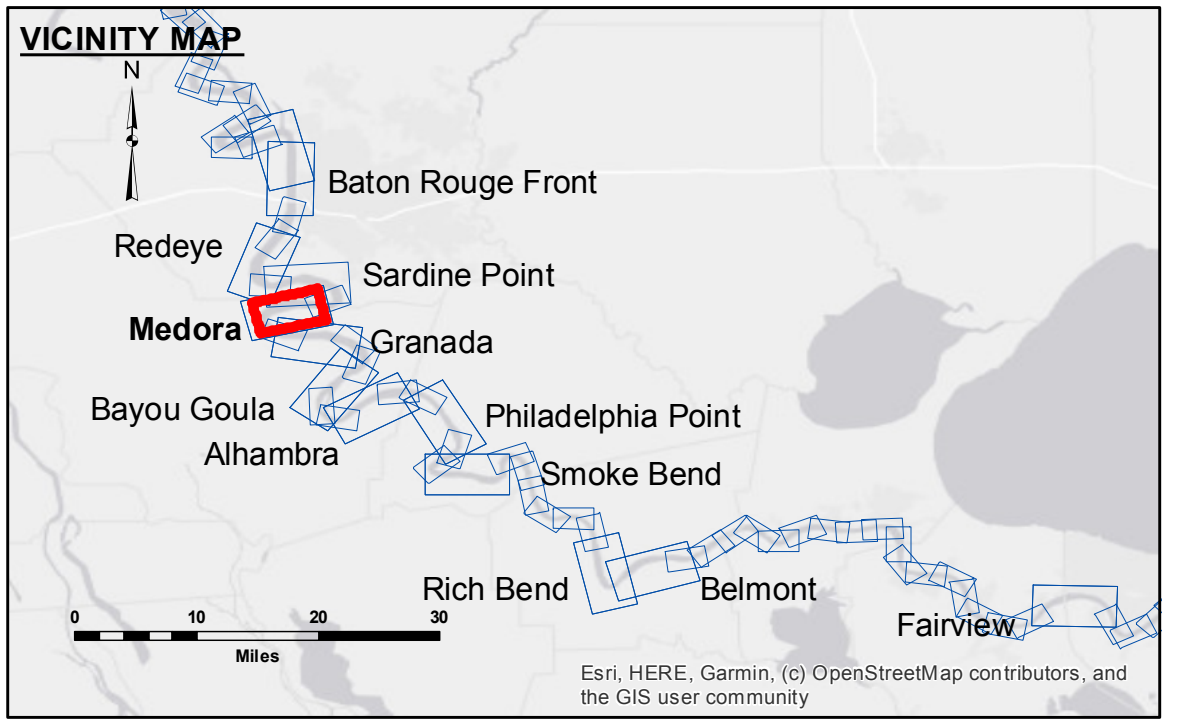


DISCLAIMER: The data represents the results of data collection for a specific U.S. Army Corps of Engineers project. It is not intended for use in any other project or for any purpose other than the one for which it was collected. The user is responsible for the results of any use of this data. The application of the data for other than its intended purpose is at the user's risk. The user is responsible for the results of any use of this data. The application of the data for other than its intended purpose is at the user's risk. The user is responsible for the results of any use of this data. The application of the data for other than its intended purpose is at the user's risk.

Submitted:	RYLAND/SONNIER
Recommended:	Chief, Survey Section
Plotted By:	BD
Checked By:	AC

MISSISSIPPI RIVER - B. R. TO GULF
MEDORA CROSSING
MD_08_MED_20210919_CS
19 September 2021



LEGEND

- Federal Navigation Channel
- Federal Navigation Center Line
- As-built Pipeline/Cable
- Unconfirmed Pipeline/Cable
- Project Depth Contour
- Cable Area
- Placement Area
- Anchorage Area
- ⊗ Obstruction Point
- ✈ Wrecks-Submerged
- Borrow Area
- Shoalest Sounding**
- ★ Beacon, General
- ◆ Red Navigation Buoy
- ◆ Green Navigation Buoy
- 0' and above
- 0' to -5'
- 5' to -10'
- 10' to -20'
- 20' to -30'
- 30' to -35'
- 35' to -40'
- 40' to -45'
- 45' and below

NOTES:

Horizontal Coordinate System:
 North American Datum of 1983 (NAD83), projected to the State Plane Coordinate System (SPCS), Louisiana South Zone. Distance units in U.S. Survey Feet.

Vertical Datum:
 Soundings are shown in feet and indicate depths below Low Water Reference Plane 2007 (NAVD).
 Distances on the Mississippi River, above and below Head of Passes are shown at 1 mile intervals.

The location of navigation aids are based on and provided by the U.S. Coast Guard and USACE crew.
 2015 Aerial Photography data source: NAIP, USDA-FSA-APFO Aerial Photography Field Office.

Reference is N.O.A.A. Navigation Chart No. 11370.

** Shoalest Sounding per Quarter per Reach.

*** High frequency (200 kHz) survey data represents the first signal return at a sounding location and will include suspended solids, known as "fluff", if present. Low frequency (20 kHz) survey data normally penetrates through this "fluff" layer to depict elevations of consolidated bottom material. Low frequency accuracies may vary depending on channel conditions and bathymeter settings.

LWRP: 2.1
 Gage Reading: BR:12.4 D:6.6 USED:10.60 NAVD
 Sea Conditions: CALM
 Vessel Name: OB-189
 Survey Type: CONDITION
 Sounding Frequency***: HIGH

Feet
 0 500 1,000 1,500 2,000 2,500

Sheet Reference Number
8 of 97