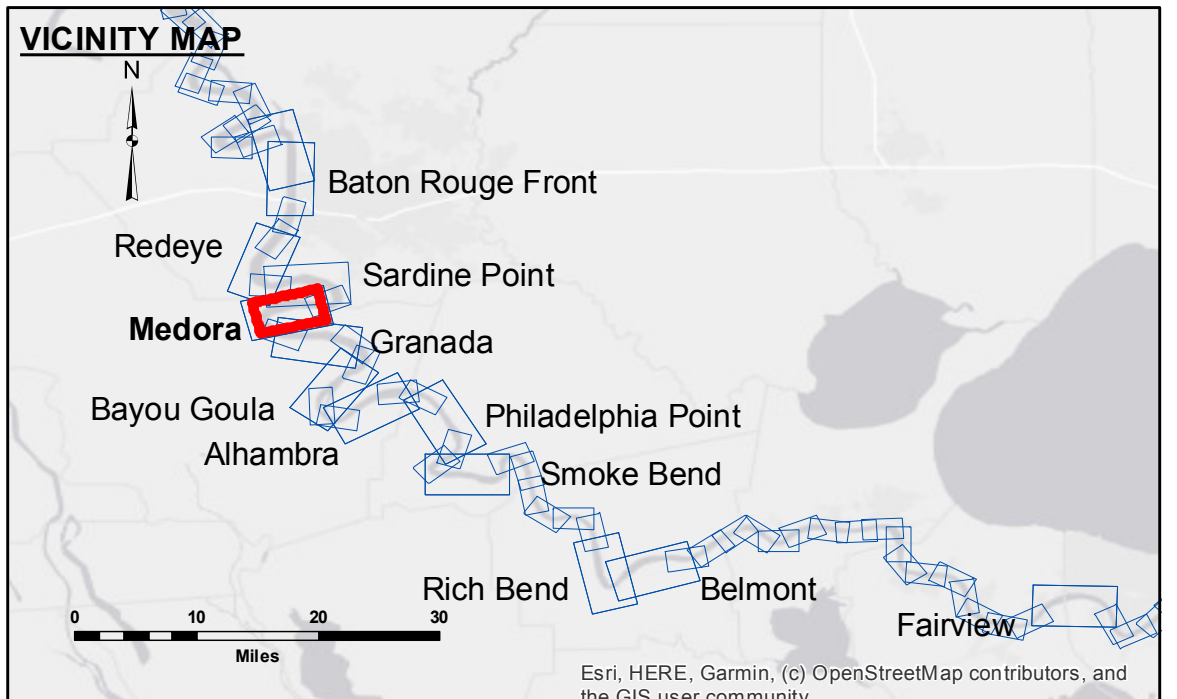


DISCLAIMER: The data represents the results of data collection for a specific US Army Corps of Engineers project. It is not intended for use in any other project, and its use is limited to the project for which it was collected. The user is responsible for the results. Data Constraints: Hydrographic survey data is subject to change due to several factors including but not limited to dredging, sedimentation, and channel migration. The Corps of Engineers does not warrant the accuracy of the data for purposes other than the project for which it was collected. The information depicted on this map represents the results of a survey conducted on the date indicated. It is not intended to represent the general condition existing at that time.

Submitted:	Surveyed By:	Checked By:
Recommended:	R. LAND/SIMMONS	AC
Approved:	Plotted By:	
	BD	

MISSISSIPPI RIVER - B. R. TO GULF
 MEDORA CROSSING
 MD_08_MED_20211013_CS
 13 October 2021



LEGEND

- Federal Navigation Channel (dashed line)
- Federal Navigation Center Line (solid line)
- As-built Pipeline/Cable (thick solid line)
- Unconfirmed Pipeline/Cable (dotted line)
- Project Depth Contour (thin solid line)
- Cable Area (dotted area)
- Placement Area (red outline)
- Anchorage Area (dashed outline)
- Obstruction Point (cross symbol)
- Wrecks-Submerged (star symbol)
- Borrow Area (blue outline)
- Shoalest Sounding** (yellow dot)
- Beacon, General (star symbol)
- Red Navigation Buoy (red diamond)
- Green Navigation Buoy (green diamond)

Color-coded depth ranges:

- 0' and above (green)
- 0' to -5' (yellow)
- 5' to -10' (orange)
- 10' to -20' (light blue)
- 20' to -30' (medium blue)
- 30' to -35' (dark blue)
- 35' to -40' (blue)
- 40' to -45' (purple)
- 45' and below (white)

NOTES:

Horizontal Coordinate System:
 North American Datum of 1983 (NAD83), projected to the State Plane Coordinate System (SPCS), Louisiana South Zone. Distance units in U.S. Survey Feet.

Vertical Datum:
 Soundings are shown in feet and indicate depths below Low Water Reference Plane 2007 (NAVD).
 Distances on the Mississippi River, above and below Head of Passes are shown at 1 mile intervals.

The location of navigation aids are based on and provided by the U.S. Coast Guard and USACE crew.
 2015 Aerial Photography data source: NAIP, USDA-FSA-APFO Aerial Photography Field Office.

Reference is N.O.A.A. Navigation Chart No. 11370.

** Shoalest Sounding per Quarter per Reach.

*** High frequency (200 kHz) survey data represents the first signal return at a sounding location and will include suspended solids, known as "fluff", if present. Low frequency (20 kHz) survey data normally penetrates through this "fluff" layer to depict elevations of consolidated bottom material. Low frequency accuracies may vary depending on channel conditions and bathymeter settings.

LWRP: 2.1
 Gage Reading: BR:6.4 D:4.0 USED:5.70 NAVD
 Sea Conditions: CALM
 Vessel Name: OB-189
 Survey Type: CONDITION
 Sounding Frequency***: HIGH

Scale: 0 to 2,500 Feet

Sheet Reference Number
 8 of 97