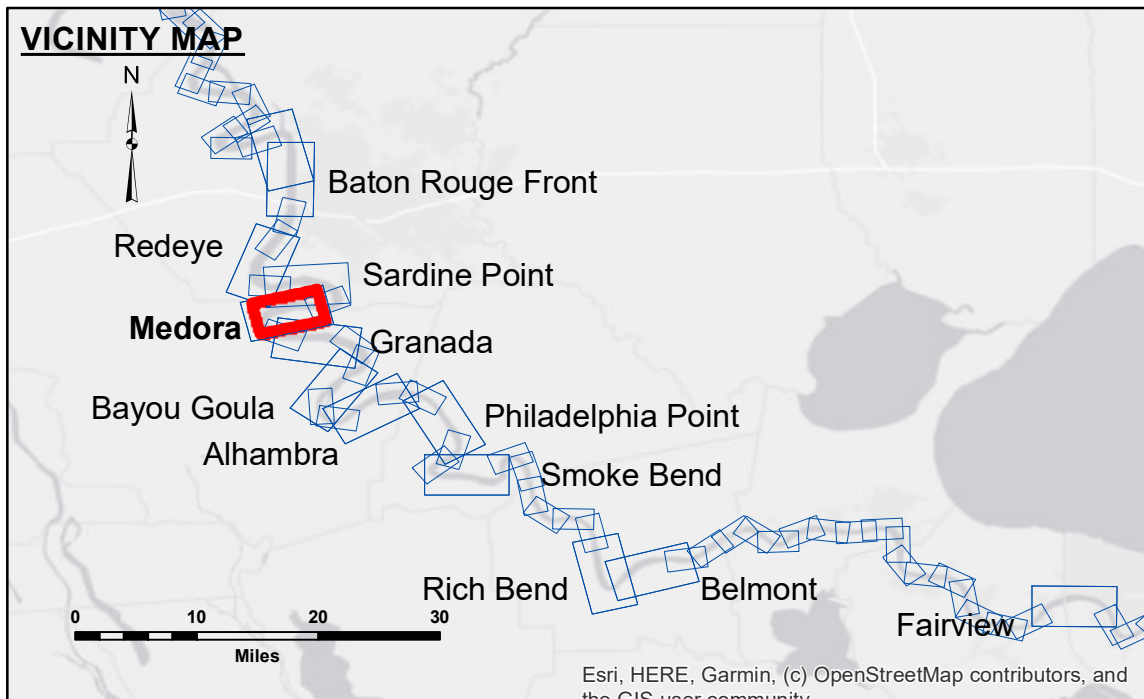


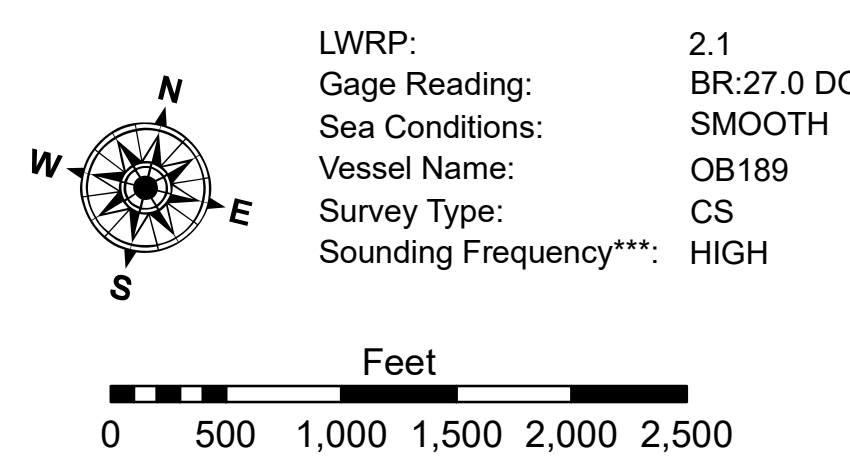
DISTRIBUTION LIABILITY: The data represents the results of data collection/processing for a specific US Army Corps of Engineers project. It is only valid for its intended use, content, time and accuracy specifications. The user is responsible for the results. The user must apply the application of the data for other than its intended purpose. Data Constants: Hydrographic survey data is subject to change rapidly due to several factors including but not limited to changing hydrological conditions when developed after the date of the survey. The user must apply the application of the data for other than its intended purpose. The information depicted on this map represents the results of a survey conducted on the date indicated. It is not to be considered as a representation of the general condition existing at that time.

Submitted:	Surveyed By:	Plotted By:	Checked By:
Recommended:	R. YLAND/RHODEN	J. H.	J. H.
Approved:	Chief, Survey Section	Chief, Survey Section	Chief, Waterways Maintenance Section

MISSISSIPPI RIVER - B. R. TO GULF
MEDORA CROSSING
MD_08_MED_20220120_CS
20 January 2022



LEGEND		DIKE ELEVATION	
--- Federal Navigation Channel	○ Cable Area	1	-10 NGVD
— Federal Navigation Center Line	□ Placement Area	2	OR -12.1 LWRP
— As-built Pipeline/Cable	□ Anchorage Area	3	-4 NGVD
..... Unconfirmed Pipeline/Cable	⊗ Obstruction Point		OR -5.1 LWRP
— Project Depth Contour	⚓ Wrecks-Submerged		2 NGVD
	★ Beacon, General		OR -0.1 LWRP
	◆ Borrow Area		
	● Shoalest Sounding**		
	◆ Red Navigation Buoy		
	◆ Green Navigation Buoy		



NOTES:
 Horizontal Coordinate System: North American Datum of 1983 (NAD83), projected to the State Plane Coordinate System (SPCS), Louisiana South Zone. Distance units in U.S. Survey Feet.
 Vertical Datum: Soundings are shown in feet and indicate depths below Low Water Reference Plane 2007 (NAVD).
 Distances on the Mississippi River, above and below Head of Passes are shown at 1 mile intervals.
 The location of navigation aids are based on and provided by the U.S. Coast Guard and USACE crew.
 2015 Aerial Photography data source: NAIP, USDA-FSA-APFO Aerial Photography Field Office.
 Reference is N.O.A. Navigation Chart No. 11370.
 ** Shoalest Sounding per Quarter per Reach.
 *** High frequency (200 kHz) survey data represents the first signal return at a sounding location and will include suspended solids, known as "fluff", if present. Low frequency (20 kHz) survey data normally penetrates through this "fluff" layer to depict elevations of consolidated bottom material. Low frequency accuracies may vary depending on channel conditions and fathometer settings.

Sheet Reference Number
8 of 97