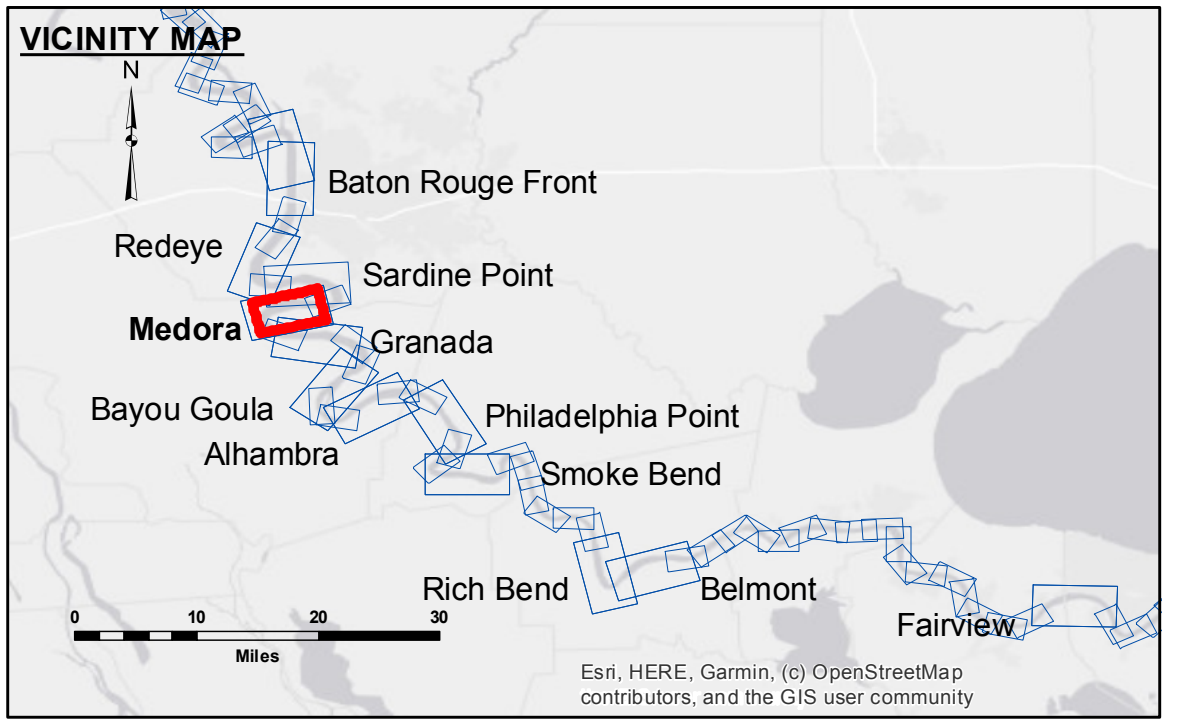


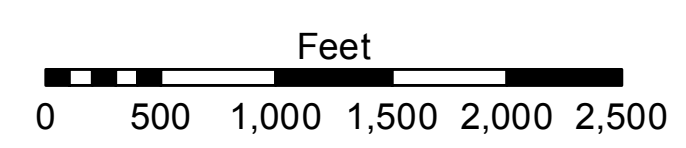
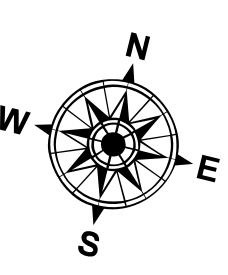
**DISCLAIMER**  
 The data and information presented on this map represent the results of a survey conducted for a specific project. The data is not to be used for any purpose other than that for which it was collected. The user is responsible for the accuracy, reliability, usability, or suitability of the data for any particular purpose. The user is also responsible for the accuracy, reliability, usability, or suitability of the data for any particular purpose. The user is also responsible for the accuracy, reliability, usability, or suitability of the data for any particular purpose.

|              |                      |                      |                      |
|--------------|----------------------|----------------------|----------------------|
| Submitted:   | Surveyed By:         | Plotted By:          | Checked By:          |
| Recommended: | PM SR                | JH                   | JH                   |
| Approved:    | Chief Survey Section | Chief Survey Section | Chief Survey Section |

**MISSISSIPPI RIVER - B. R. TO GULF**  
**MEDORA CROSSING**  
**MD\_08\_MED\_20220706\_CS**  
**06 July 2022**



| LEGEND                           |                     |                         |                |
|----------------------------------|---------------------|-------------------------|----------------|
| --- Federal Navigation Channel   | ○ Cable Area        | □ Borrow Area           | 0' and above   |
| — Federal Navigation Center Line | ■ Placement Area    | ● Shoalest Sounding**   | 0' to -5'      |
| — As-built Pipeline/Cable        | □ Anchorage Area    | ★ Beacon, General       | -5' to -10'    |
| ..... Unconfirmed Pipeline/Cable | ✕ Obstruction Point | ♦ Red Navigation Buoy   | -10' to -20'   |
| — Project Depth Contour          | ✈ Wrecks-Submerged  | ♦ Green Navigation Buoy | -20' to -30'   |
|                                  |                     |                         | -30' to -35'   |
|                                  |                     |                         | -35' to -40'   |
|                                  |                     |                         | -40' to -45'   |
|                                  |                     |                         | -45' and below |



LWRP: 2.1  
 Gage Reading: VRS RTK: 11.10 NAVD AVG  
 Sea Conditions: CALM  
 Vessel Name: OB-167  
 Survey Type: CONDITION  
 Sounding Frequency\*\*\*: HIGH

**NOTES:**  
 Horizontal Coordinate System:  
 North American Datum of 1983 (NAD83), projected to the State Plane Coordinate System (SPCS), Louisiana South Zone. Distance units in U.S. Survey Feet.  
 Vertical Datum:  
 Soundings are shown in feet and indicate depths below Low Water Reference Plane 2007 (NAVD).  
 Distances on the Mississippi River, above and below Head of Passes are shown at 1 mile intervals.  
 The location of navigation aids are based on and provided by the U.S. Coast Guard and USACE crew.  
 2015 Aerial Photography data source: NAIP, USDA-FSA-APFO Aerial Photography Field Office.  
 Reference is N.O.A.A. Navigation Chart No. 11370.  
 \*\* Shoalest Sounding per Quarter per Reach.  
 \*\*\* High frequency (200 kHz) survey data represents the first signal return at a sounding location and will include suspended solids, known as "fluff", if present. Low frequency (20 kHz) survey data normally penetrates through this "fluff" layer to depict elevations of consolidated bottom material. Low frequency accuracies may vary depending on channel conditions and bathymetry settings.

**Sheet Reference Number**  
**8 of 97**