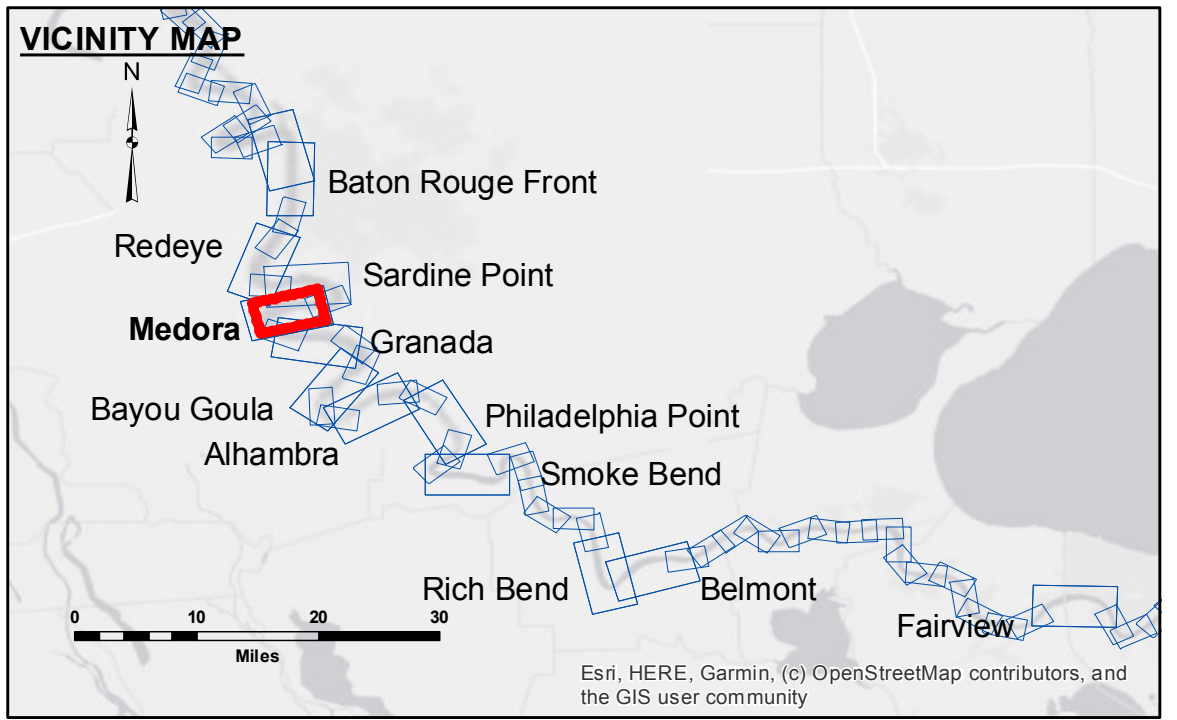


DISCLAIMER: The United States Government furnishes these data and the recipient accepts and uses them with the express understanding that the Government makes no warranty, expressed or implied, as to the accuracy, reliability, or suitability for any particular purpose of the information furnished. The user is responsible for the results of any use of the information. The application of the data for other than its intended purpose is not warranted. The user is responsible for the results of any use of the information. The user is responsible for the results of any use of the information. The user is responsible for the results of any use of the information.

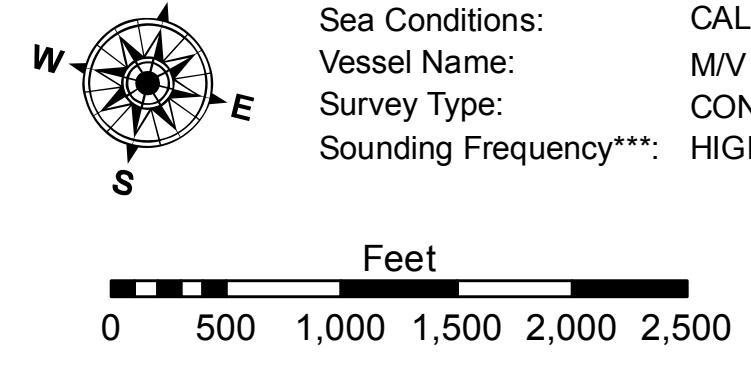
U.S. ARMY CORPS OF ENGINEERS NEW ORLEANS DISTRICT		
Submitted:	Surveyed By: RYLAND/ADAMS	Plotted By: BD
Recommended:	Checked:	Checked By: AC
Approved:	Checked:	Checked By: AC

**MISSISSIPPI RIVER - B.R. TO GULF
MEDORA CROSSING
MD_08_MED_20220712_CS
12 July 2022**



LEGEND	
--- Federal Navigation Channel	● Cable Area
— Federal Navigation Center Line	■ Placement Area
— As-built Pipeline/Cable	□ Borrow Area
..... Unconfirmed Pipeline/Cable	● Shoalest Sounding**
— Project Depth Contour	☆ Beacon, General
	◆ Red Navigation Buoy
	◆ Green Navigation Buoy
	⊗ Obstruction Point
	⚓ Wrecks-Submerged

LWRP:	2.1
Gage Reading:	BR:9.9 D:5.0 USED:8.40 NAVD
Sea Conditions:	CALM
Vessel Name:	M/V VALENTOUR
Survey Type:	CONDITION
Sounding Frequency***:	HIGH



NOTES:
Horizontal Coordinate System: North American Datum of 1983 (NAD83), projected to the State Plane Coordinate System (SPCS), Louisiana South Zone. Distance units in U.S. Survey Feet.
Vertical Datum: Soundings are shown in feet and indicate depths below Low Water Reference Plane 2007 (NAVD).
Distances on the Mississippi River, above and below Head of Passes are shown at 1 mile intervals.
The location of navigation aids are base on and provided by the U.S. Coast Guard and USACE crew.
2015 Aerial Photography data source: NAIP, USDA-FSA-APFO Aerial Photography Field Office.
Reference is N.O.A.A. Navigation Chart No. 11370.
** Shoalest Sounding per Quarter per Reach.
*** High frequency (200 kHz) survey data represents the first signal return at a sounding location and will include suspended solids, known as "fluff", if present. Low frequency (20 kHz) survey data normally penetrates through this "fluff" layer to depict elevations of consolidated bottom material. Low frequency accuracies may vary depending on channel conditions and fathometer settings.

**Sheet Reference Number
8 of 97**

Revision Number:
4.2-20210420