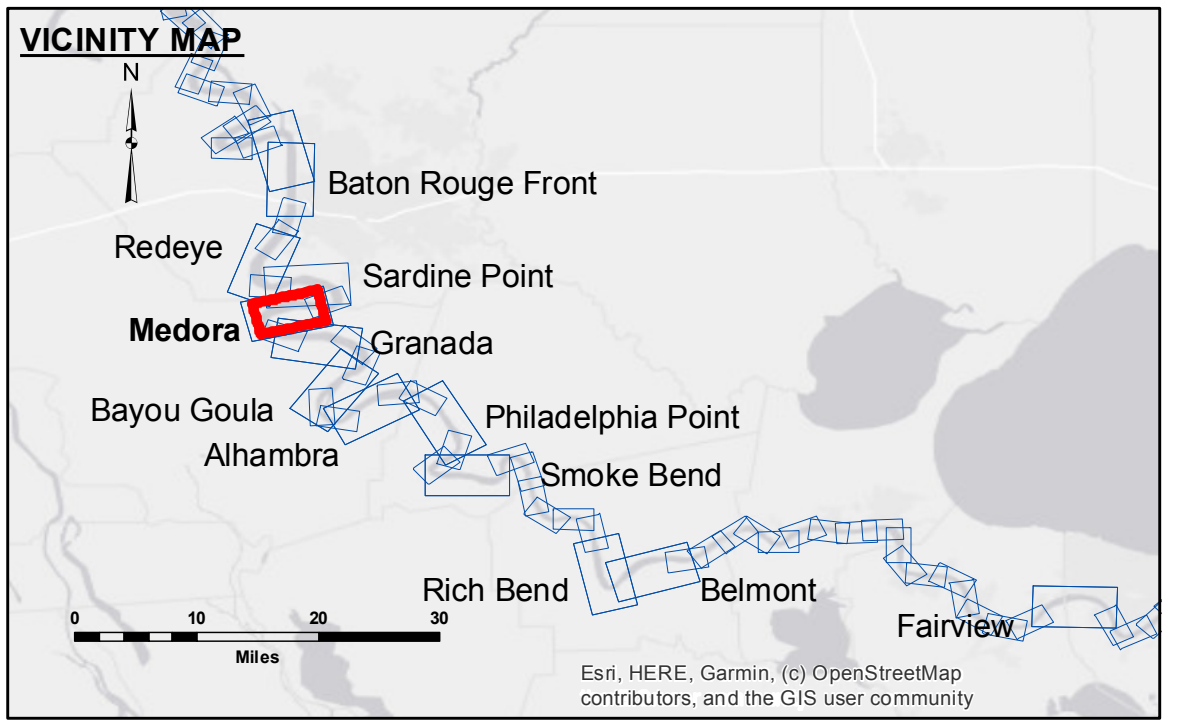


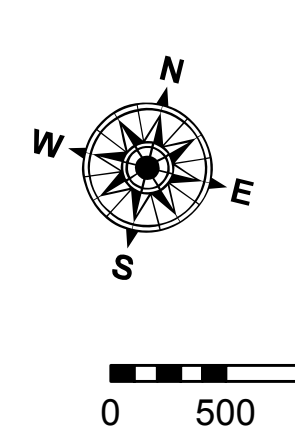
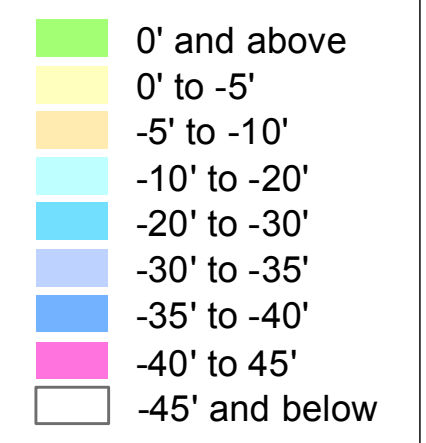
DISCLAIMER: The information depicted on this map represents the results of a data collection/processing for a specific US Army Corps of Engineers project. It is not intended for use in any other project, and its use is limited to the project for which it was prepared. The user is responsible for the results of any use of this information. The application of the data for other than its intended purpose is not warranted. Data Collection: Hydrographic survey data is subject to change rapidly due to several factors including but not limited to dredging, sedimentation, and changes in the hydrographical conditions which develop after the date of the survey. The Corps of Engineers does not assume any responsibility for changes in the hydrographical conditions existing at the time of the survey. The information depicted on this map represents the results of a data collection/processing for a specific US Army Corps of Engineers project. It is not intended for use in any other project, and its use is limited to the project for which it was prepared. The user is responsible for the results of any use of this information. The application of the data for other than its intended purpose is not warranted. Data Collection: Hydrographic survey data is subject to change rapidly due to several factors including but not limited to dredging, sedimentation, and changes in the hydrographical conditions which develop after the date of the survey. The Corps of Engineers does not assume any responsibility for changes in the hydrographical conditions existing at the time of the survey.

Submitted:	Surveyed By:
Recommended:	Ryland/Simmons
Plotted:	JH
Checked By:	JH
Approved:	Chief, Waterways Maintenance Section

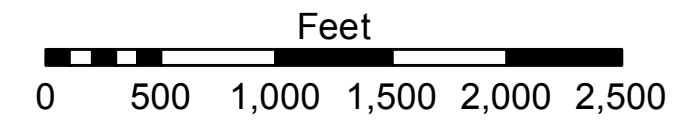
**MISSISSIPPI RIVER - B.R. TO GULF
MEDORA CROSSING
MD_08_MED_20221201_AD
01 December 2022**



LEGEND	
--- Federal Navigation Channel	● Cable Area
— Federal Navigation Center Line	■ Placement Area
— As-built Pipeline/Cable	□ Anchorage Area
..... Unconfirmed Pipeline/Cable	⊗ Obstruction Point
— Project Depth Contour	✶ Wrecks-Submerged
□ Borrow Area	★ Beacon, General
● Shoalest Sounding**	◆ Red Navigation Buoy
★ Beacon, General	◆ Green Navigation Buoy



LWRP: 2.1
Gage Reading: BR:7.8 D:4.7 USED: 6.90 NAVD
Sea Conditions: CALM
Vessel Name: LAFOURCHE
Survey Type: CS
Sounding Frequency***: HIGH



NOTES:
Horizontal Coordinate System: North American Datum of 1983 (NAD83), projected to the State Plane Coordinate System (SPCS), Louisiana South Zone. Distance units in U.S. Survey Feet.
Vertical Datum: Soundings are shown in feet and indicate depths below Low Water Reference Plane 2007 (NAVD). Distances on the Mississippi River, above and below Head of Passes are shown at 1 mile intervals.
The location of navigation aids are based on and provided by the U.S. Coast Guard and USACE crew. 2015 Aerial Photography data source: NAIP, USDA-FSA-APFO Aerial Photography Field Office.
Reference is N.O.A.A. Navigation Chart No. 11370.
** Shoalest Sounding per Quarter per Reach.
*** High frequency (200 kHz) survey data represents the first signal return at a sounding location and will include suspended solids, known as "fluff", if present. Low frequency (20 kHz) survey data normally penetrates through this "fluff" layer to depict elevations of consolidated bottom material. Low frequency accuracies may vary depending on channel conditions and fathometer settings.

**Sheet Reference Number
8 of 97**