

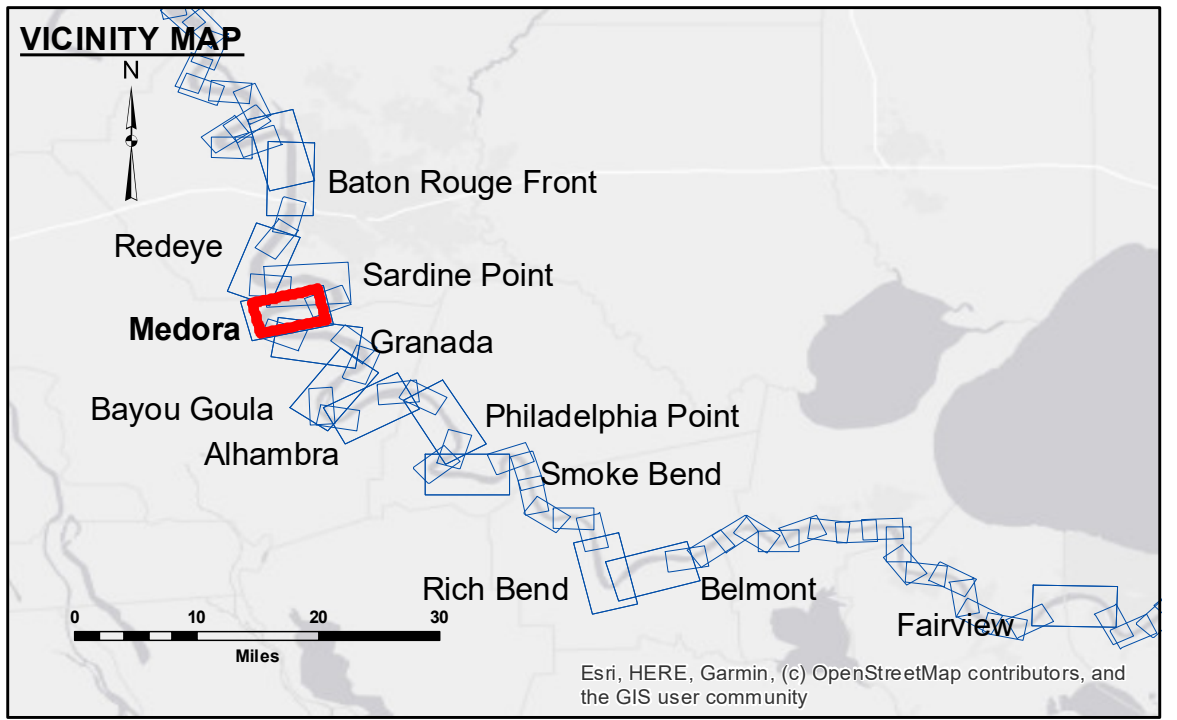
**DISCLAIMER:** The data represents the results of data collection processing for a specific US Army Corps of Engineers project. It is only valid for its intended use, control, time and accuracy specifications. The user is responsible for the results. The application of the data for other than its intended purpose is not recommended. Hydrographic survey data is subject to change rapidly due to several factors including but not limited to dredging, sedimentation, and channel migration. The user is responsible for the results of the data. The information depicted on the map represents the results of a survey conducted on the date of the survey. The user is responsible for the results of the data. The user is responsible for the results of the data. The user is responsible for the results of the data.

Submitted:	Surveyed By:	Checked By:
Recommended:	RYLAND/SIMMONS	AC
Approved:	Plotted By:	
	BD	

**MISSISSIPPI RIVER - B.R. TO GULF**  
**MEDORA CROSSING**  
**MD\_08\_MED\_20230109\_CS**  
**09 January 2023**

**Sheet Reference Number**  
**8 of 97**

Revision Number:  
 4.2-202/044.20



**LEGEND**

- Federal Navigation Channel
- Federal Navigation Center Line
- As-built Pipeline/Cable
- ..... Unconfirmed Pipeline/Cable
- Project Depth Contour
- Cable Area
- Placement Area
- Anchorage Area
- ⊗ Obstruction Point
- ✈ Wrecks-Submerged
- Borrow Area
- Shoalest Sounding\*\*
- ☆ Beacon, General
- ◆ Red Navigation Buoy
- ◆ Green Navigation Buoy
- 0' and above
- 0' to -5'
- 5' to -10'
- 10' to -20'
- 20' to -30'
- 30' to -35'
- 35' to -40'
- 40' to -45'
- 45' and below

**NOTES:**

Horizontal Coordinate System:  
 North American Datum of 1983 (NAD83), projected to the State Plane Coordinate System (SPCS), Louisiana South Zone. Distance units in U.S. Survey Feet.

Vertical Datum:  
 Soundings are shown in feet and indicate depths below Low Water Reference Plane 2007 (NAVD).

Distances on the Mississippi River, above and below Head of Passes are shown at 1 mile intervals.

The location of navigation aids are base on and provided by the U.S. Coast Guard and USACE crew.

2015 Aerial Photography data source: NAIP, USDA-FSA-APFO Aerial Photography Field Office.

Reference is N.O.A. Navigation Chart No. 11370.

\*\* Shoalest Sounding per Quarter per Reach.

\*\*\* High frequency (200 kHz) survey data represents the first signal return at a sounding location and will include suspended solids, known as "fluff", if present. Low frequency (20 kHz) survey data normally penetrates through this "fluff" layer to depict elevations of consolidated bottom material. Low frequency accuracies may vary depending on channel conditions and bathymeter settings.

LWRP: 2.1  
 Gage Reading: BR:14.7 D:8.4 USED:12.70 NAVD  
 Sea Conditions: CALM  
 Vessel Name: M/V LAFORUCHE  
 Survey Type: CS  
 Sounding Frequency\*\*\*: HIGH

Feet  
 0 500 1,000 1,500 2,000 2,500