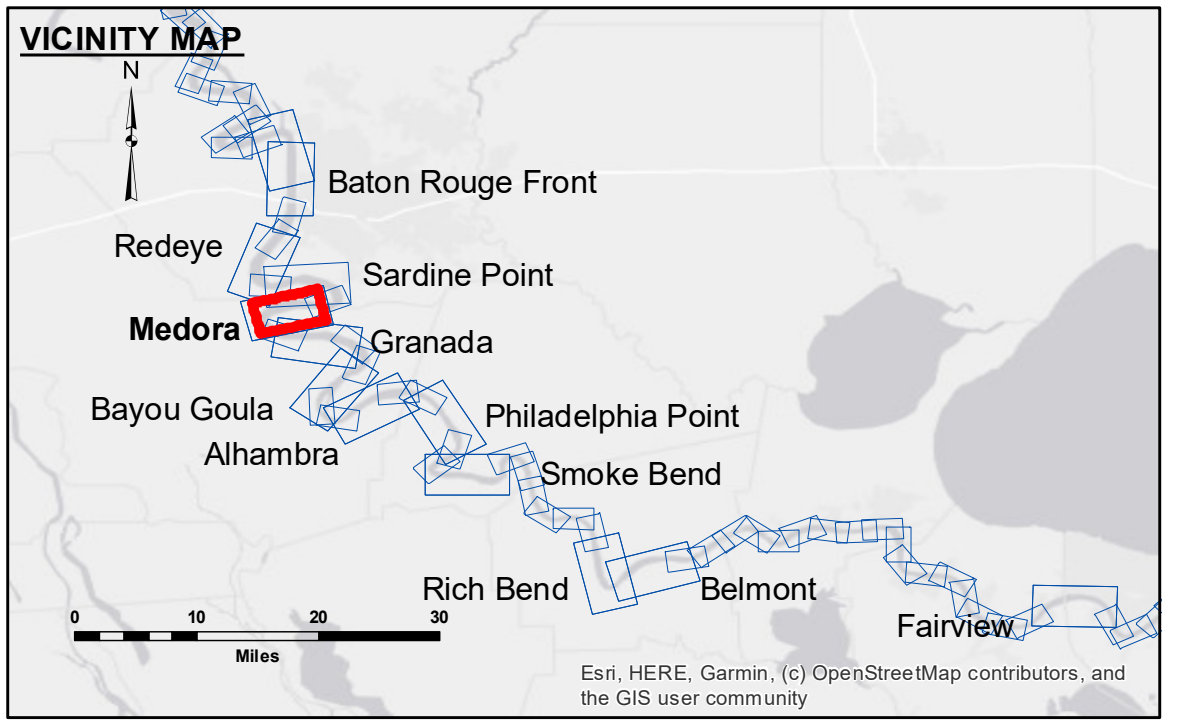


**DISCLAIMER:** The data represents the results of data collection processing for a specific US Army Corps of Engineers project. The data is only valid for its intended use, control, time and accuracy specifications. The user is responsible for the results. The application of the data for other than its intended purpose. Data Contaminants: Hydrographic survey data is subject to change rapidly due to several factors including but not limited to dredging, sedimentation, and channel migration. The user is responsible for the accuracy of the data. The information depicted on this map represents the results of a survey conducted on the date of the survey. The user is responsible for the accuracy of the data. The information depicted on this map represents the results of a survey conducted on the date of the survey. The user is responsible for the accuracy of the data.

Submitted:	Surveyed By: RYLAND/SIMMONS
Recommended:	Plotted By: BD
Approved:	Checked By: AD/JH

U.S. ARMY CORPS OF ENGINEERS  
NEW ORLEANS DISTRICT

**MISSISSIPPI RIVER - B.R. TO GULF  
MEDORA CROSSING  
MD\_08\_MED\_20230516\_CS  
16 May 2023**



LEGEND	
--- Federal Navigation Channel	● Cable Area
— Federal Navigation Center Line	■ Placement Area
— As-built Pipeline/Cable	□ Anchorage Area
..... Unconfirmed Pipeline/Cable	⊗ Obstruction Point
— Project Depth Contour	✈ Wrecks-Submerged
□ Borrow Area	★ Beacon, General
● Shoalest Sounding**	◆ Red Navigation Buoy
◆ Green Navigation Buoy	

**NOTES:**

Horizontal Coordinate System:  
North American Datum of 1983 (NAD83), projected to the State Plane Coordinate System (SPCS), Louisiana South Zone. Distance units in U.S. Survey Feet.

Vertical Datum:  
Soundings are shown in feet and indicate depths below Low Water Reference Plane 2007 (NAVD).

Distances on the Mississippi River, above and below Head of Passes are shown at 1 mile intervals.

The location of navigation aids are base on and provided by the U.S. Coast Guard and USACE crew.

2015 Aerial Photography data source: NAIP, USDA-FSA-APFO Aerial Photography Field Office.

Reference is N.O.A. Navigation Chart No. 11370.

\*\* Shoalest Sounding per Quarter per Reach.

\*\*\* High frequency (200 kHz) survey data represents the first signal return at a sounding location and will include suspended solids, known as "fluff", if present. Low frequency (20 kHz) survey data normally penetrates through this "fluff" layer to depict elevations of consolidated bottom material. Low frequency accuracies may vary depending on channel conditions and fathometer settings.

LWRP: 2.1  
Gage Reading: BR:23.0 D:14.3 USED:20.30 NAVD  
Sea Conditions: CALM  
Vessel Name: M/V LAFOURCHE  
Survey Type: CS  
Sounding Frequency\*\*\*: HIGH

0 500 1,000 1,500 2,000 2,500 Feet

**Sheet Reference Number  
8 of 97**

Revision Number:  
4.2-202/04/20