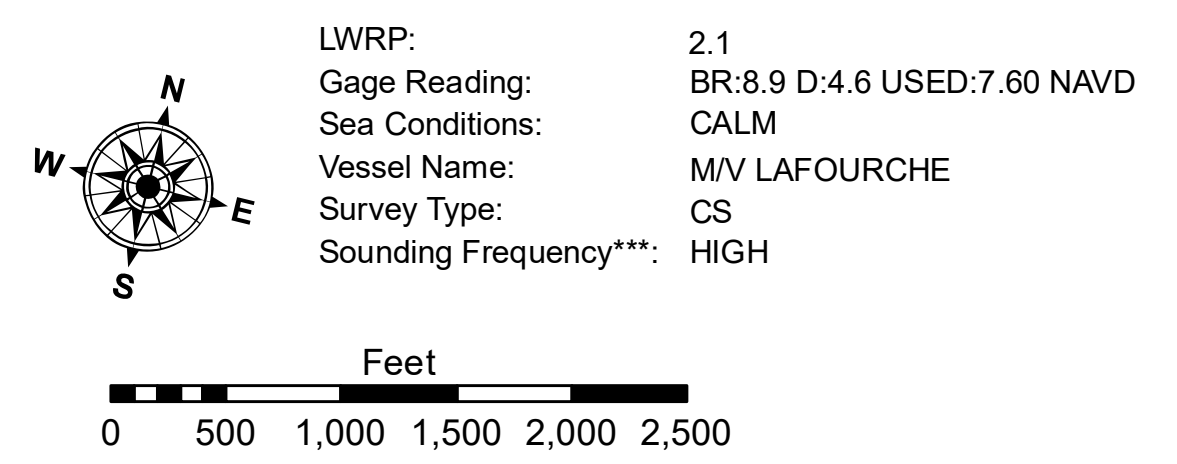


LEGEND

--- Federal Navigation Channel	○ Cable Area	□ Borrow Area	■ 0' and above
— Federal Navigation Center Line	□ Placement Area	● Shoalest Sounding**	■ 0' to -5'
— As-built Pipeline/Cable	□ Anchorage Area	☆ Beacon, General	■ -5' to -10'
..... Unconfirmed Pipeline/Cable	⊗ Obstruction Point	◆ Red Navigation Buoy	■ -10' to -20'
— Project Depth Contour	⚓ Wrecks-Submerged	◆ Green Navigation Buoy	■ -20' to -30'
			■ -30' to -35'
			■ -35' to -40'
			■ -40' to 45'
			■ -45' and below



NOTES:

Horizontal Coordinate System:
North American Datum of 1983 (NAD83), projected to the State Plane Coordinate System (SPCS), Louisiana South Zone. Distance units in U.S. Survey Feet.

Vertical Datum:
Soundings are shown in feet and indicate depths below Low Water Reference Plane 2007 (NAVD).

Distances on the Mississippi River, above and below Head of Passes are shown at 1 mile intervals.

The location of navigation aids are base on and provided by the U.S. Coast Guard and USACE crew.

2015 Aerial Photography data source: NAIP, USDA-FSA-APFO Aerial Photography Field Office.

Reference is N.O.A. Navigation Chart No. 11370.

** Shoalest Sounding per Quarter per Reach.

*** High frequency (200 kHz) survey data represents the first signal return at a sounding location and will include suspended solids, known as "fluff", if present. Low frequency (20 kHz) survey data normally penetrates through this "fluff" layer to depict elevations of consolidated bottom material. Low frequency accuracies may vary depending on channel conditions and bathymeter settings.



DISCLAIMER: The United States Government furnishes these data and the recipient accepts and uses them with the express understanding that the United States Government makes no warranty, express or implied, concerning the accuracy, completeness, reliability, usability or suitability for any particular purpose of the information furnished. The user is responsible for the results obtained from the application of the data for other than its intended purpose. The information depicted on the map represents the results of a survey conducted on the date of the survey. The user is responsible for the results of the application of the data for other than its intended purpose. The information depicted on the map represents the results of a survey conducted on the date of the survey. The user is responsible for the results of the application of the data for other than its intended purpose.

U.S. ARMY CORPS OF ENGINEERS NEW ORLEANS DISTRICT	
Submitted:	Surveyed By: RYLAND/SIMMONS
Recommended:	Plotted By: BD
Approved:	Checked By: AD/JH

**MISSISSIPPI RIVER - B.R. TO GULF
MEDORA CROSSING
MD_08_MED_20230731_CS
31 July 2023**

**Sheet Reference Number
8 of 97**