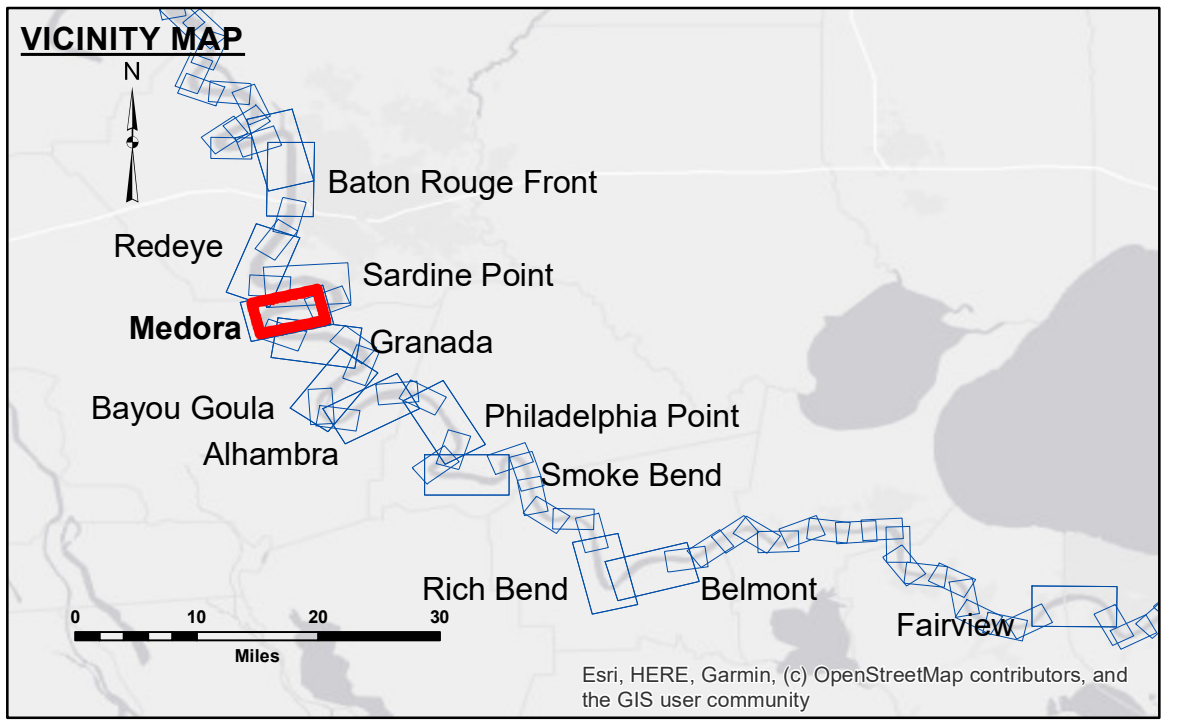


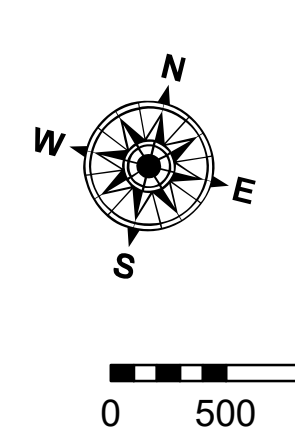
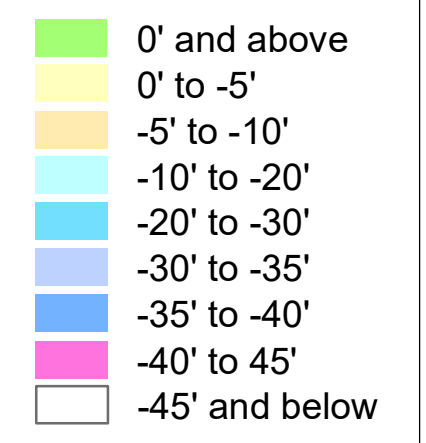
**DISCLAIMER**  
 The information depicted on this map represents the results of a survey conducted by the U.S. Army Corps of Engineers. The user is responsible for the accuracy, completeness, and reliability of the data for its intended use. The user is not to be held liable for any damages or losses resulting from the use of this information. The U.S. Army Corps of Engineers does not warrant the accuracy or reliability of the data for any purpose other than that for which it was collected. The user is responsible for the accuracy, completeness, and reliability of the data for its intended use. The user is not to be held liable for any damages or losses resulting from the use of this information. The U.S. Army Corps of Engineers does not warrant the accuracy or reliability of the data for any purpose other than that for which it was collected.

|  |                    |
|--|--------------------|
| U.S. ARMY CORPS OF ENGINEERS<br>NEW ORLEANS DISTRICT |                    |
| Submitted By:<br>RYLAND/SIMMONS                      | Checked By:<br>AC  |
| Recommended By:<br>Chief, Survey Section             | Approved By:<br>AC |

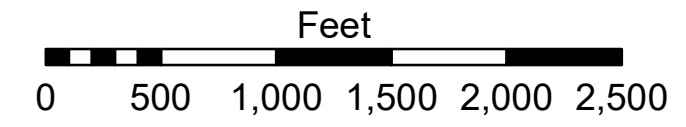
**MISSISSIPPI RIVER - B. R. TO GULF**  
**MEDORA CROSSING**  
**MD\_08\_MED\_20230809\_CS**  
**09 August 2023**



| LEGEND                           |                         |
|----------------------------------|-------------------------|
| --- Federal Navigation Channel   | ● Cable Area            |
| — Federal Navigation Center Line | ■ Placement Area        |
| — As-built Pipeline/Cable        | □ Anchorage Area        |
| ..... Unconfirmed Pipeline/Cable | ⊗ Obstruction Point     |
| — Project Depth Contour          | ✈ Wrecks-Submerged      |
| □ Borrow Area                    | ★ Beacon, General       |
| ● Shoalest Sounding**            | ♦ Red Navigation Buoy   |
| ★ Beacon, General                | ◆ Green Navigation Buoy |



LWRP: 2.1  
 Gage Reading: BR:5.5D:3.1 USED:4.8 NAVD  
 Sea Conditions: CALM  
 Vessel Name: LAFORUCHE  
 Survey Type: CS  
 Sounding Frequency\*\*\*: HIGH



**NOTES:**  
 Horizontal Coordinate System:  
 North American Datum of 1983 (NAD83), projected to the State Plane Coordinate System (SPCS), Louisiana South Zone. Distance units in U.S. Survey Feet.  
 Vertical Datum:  
 Soundings are shown in feet and indicate depths below Low Water Reference Plane 2007 (NAVD).  
 Distances on the Mississippi River, above and below Head of Passes are shown at 1 mile intervals.  
 The location of navigation aids are based on and provided by the U.S. Coast Guard and USACE crew.  
 2015 Aerial Photography data source: NAIP, USDA-FSA-APFO Aerial Photography Field Office.  
 Reference is N.O.A. Navigation Chart No. 11370.  
 \*\* Shoalest Sounding per Quarter per Reach.  
 \*\*\* High frequency (200 kHz) survey data represents the first signal return at a sounding location and will include suspended solids, known as "fluff", if present. Low frequency (20 kHz) survey data normally penetrates through this "fluff" layer to depict elevations of consolidated bottom material. Low frequency accuracies may vary depending on channel conditions and fathometer settings.

**Sheet Reference Number**  
**8 of 97**