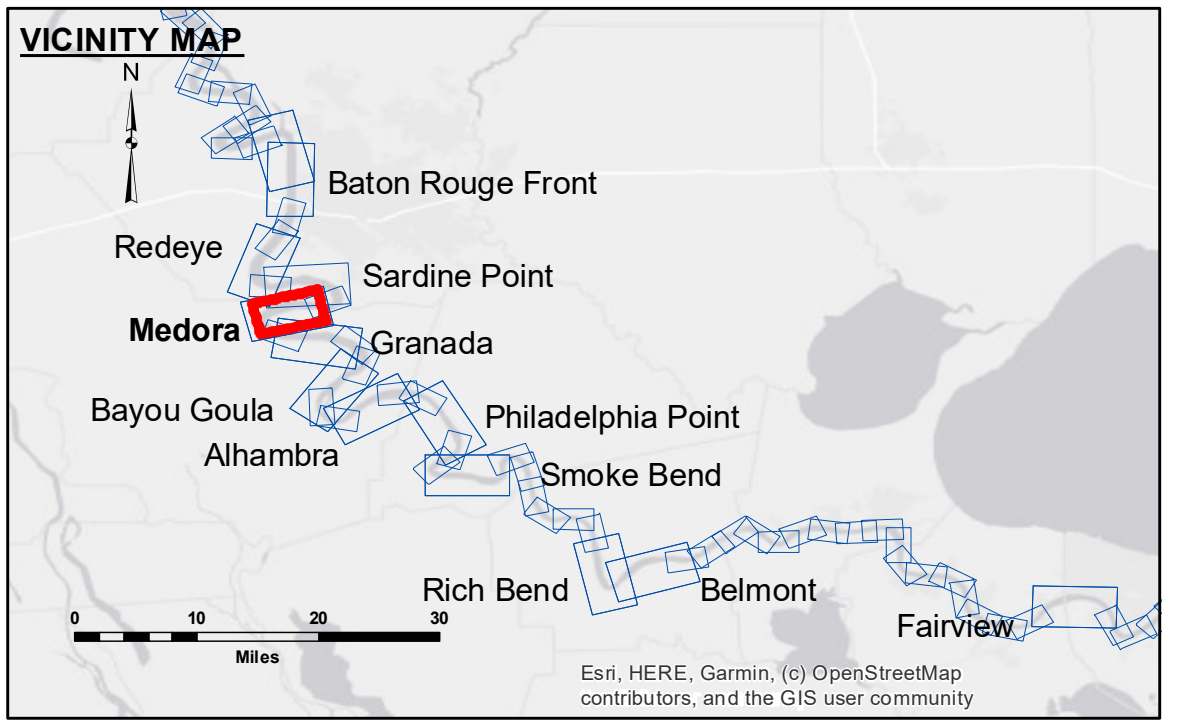


DISCLAIMER: The data represents the results of data collection/processing for a specific US Army Corps of Engineers project. It is only valid for the intended use, content, time and accuracy specifications. The user is responsible for the results and any errors. The application of the data for other than its intended purpose is not recommended. Data Collection: Hydrographic survey data is subject to change rapidly due to several factors including but not limited to dredging, sedimentation, and changes in the bathymetry of the river. The US Army Corps of Engineers does not warrant the accuracy of the data for other than its intended use. The information depicted on this map represents the results of a survey conducted on the date of the survey. It is not intended to represent the general condition existing at the time.

U.S. ARMY CORPS OF ENGINEERS NEW ORLEANS DISTRICT	
Submitted: RYLAND/SIMMONS	Surveyed By: RYLAND/SIMMONS
Recommended: CHET SURVEY SECTION	Plotted By: JH
Approved: CHET WATERWAYS MAINTENANCE SECTION	Checked By: JH

**MISSISSIPPI RIVER - B.R. TO GULF
MEDORA CROSSING
MD_08_MED_20240828_CS
28 August 2024**



LEGEND	
--- Federal Navigation Channel	● Cable Area
— Federal Navigation Center Line	■ Placement Area
— As-built Pipeline/Cable	□ Anchorage Area
..... Unconfirmed Pipeline/Cable	⊗ Obstruction Point
— Project Depth Contour	✶ Wrecks-Submerged
□ Borrow Area	★ Beacon, General
● Shoalest Sounding**	◆ Red Navigation Buoy
★ Beacon, General	◆ Green Navigation Buoy
◆ Red Navigation Buoy	■ 0' and above
◆ Green Navigation Buoy	■ 0' to -5'
	■ -5' to -10'
	■ -10' to -20'
	■ -20' to -30'
	■ -30' to -35'
	■ -35' to -40'
	■ -40' to -45'
	■ -45' and below

NOTES:

Horizontal Coordinate System:
North American Datum of 1983 (NAD83), projected to the State Plane Coordinate System (SPCS), Louisiana South Zone. Distance units in U.S. Survey Feet.

Vertical Datum:
Soundings are shown in feet and indicate depths below Low Water Reference Plane 2007 (NAVD).

Distances on the Mississippi River, above and below Head of Passes are shown at 1 mile intervals.

The location of navigation aids are based on and provided by the U.S. Coast Guard and USACE crew.

2015 Aerial Photography data source: NAIP, USDA-FSA-APFO Aerial Photography Field Office.

Reference is N.O.A.A. Navigation Chart No. 11370.

** Shoalest Sounding per Quarter per Reach.

*** High frequency (200 kHz) survey data represents the first signal return at a sounding location and will include suspended solids, known as "fluff", if present. Low frequency (20 kHz) survey data normally penetrates through this "fluff" layer to depict elevations of consolidated bottom material. Low frequency accuracies may vary depending on channel conditions and fathometer settings.

LWRP: 2.1
Gage Reading: BR:6.9 D:3.7 USED:5.90 NAVD88
Sea Conditions: CALM
Vessel Name: LAFOURCHE
Survey Type: CS
Sounding Frequency***: HIGH

Feet
0 500 1,000 1,500 2,000 2,500

**Sheet Reference Number
8 of 97**