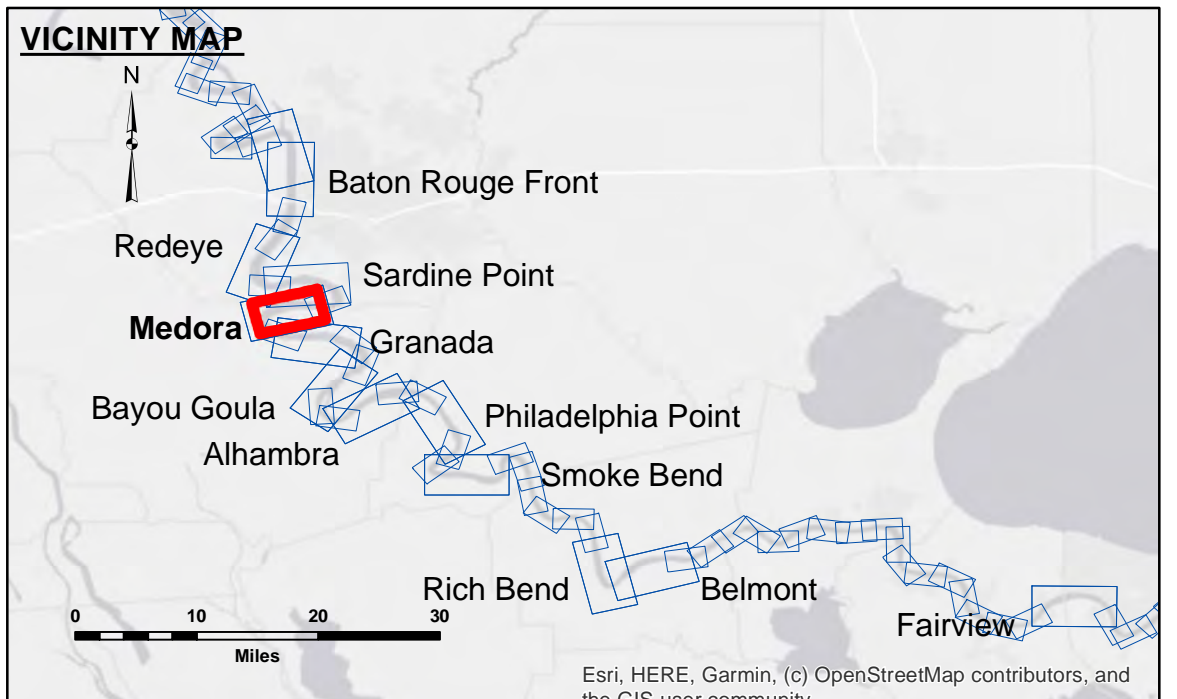


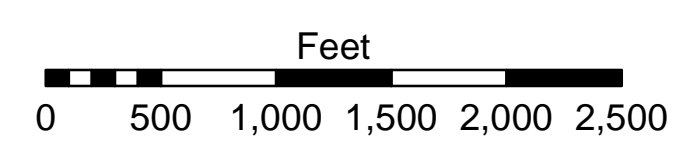
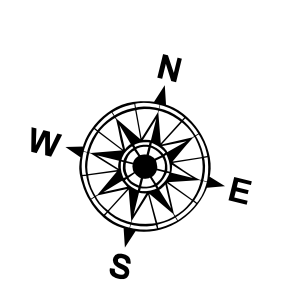
**DISCLAIMER**  
 The information depicted on this map represents the results of a survey conducted by the United States Army Corps of Engineers. The data is only valid for the intended use, content, time and accuracy specified. The user is responsible for the results of the application of the data for other than its intended purpose. Data contained herein is subject to change without notice. The user is responsible for the results of the application of the data for other than its intended purpose. The user is responsible for the results of the application of the data for other than its intended purpose. The user is responsible for the results of the application of the data for other than its intended purpose.

U.S. ARMY CORPS OF ENGINEERS NEW ORLEANS DISTRICT		
Submitted:	Surveyed By: RYLAND/SIMMONS	Plotted By: BD
Recommended:	Chief, Survey Section	Checked By: AOJH
Approved:	Chief, Waterways Maintenance Section	

**MISSISSIPPI RIVER - B.R. TO GULF**  
**MEDORA CROSSING**  
 MD\_08\_MED\_20241007\_CS  
 07 October 2024



LEGEND		DIKE ELEVATION	
--- Federal Navigation Channel	○ Cable Area	1	-10 NGVD
— Federal Navigation Center Line	□ Placement Area	2	OR -12.1 LWRP
— As-built Pipeline/Cable	□ Anchorage Area	3	-4 NGVD
..... Unconfirmed Pipeline/Cable	⊗ Obstruction Point		OR -6.1 LWRP
— Project Depth Contour	⚓ Wrecks-Submerged		2 NGVD
	□ Borrow Area		OR -0.1 LWRP
	● Shoalest Sounding**		
	★ Beacon, General		
	◆ Red Navigation Buoy		
	◆ Green Navigation Buoy		



LWRP: 2.1  
 Gage Reading: BR:8.9 D:5.6 USED:7.90 NAVD  
 Sea Conditions: CALM  
 Vessel Name: M/V LAFORUCHE  
 Survey Type: CS  
 Sounding Frequency\*\*\*: HIGH

**NOTES:**  
 Horizontal Coordinate System:  
 North American Datum of 1983 (NAD83), projected to the State Plane Coordinate System (SPCS), Louisiana South Zone. Distance units in U.S. Survey Feet.  
 Vertical Datum:  
 Soundings are shown in feet and indicate depths below Low Water Reference Plane 2007 (NAVD).  
 Distances on the Mississippi River, above and below Head of Passes are shown at 1 mile intervals.  
 The location of navigation aids are base on and provided by the U.S. Coast Guard and USACE crew.  
 2015 Aerial Photography data source: NAIP, USDA-FSA-APFO Aerial Photography Field Office.  
 Reference is N.O.A. Navigation Chart No. 11370.  
 \*\* Shoalest Sounding per Quarter per Reach.  
 \*\*\* High frequency (200 kHz) survey data represents the first signal return at a sounding location and will include suspended solids, known as "fluff", if present. Low frequency (20 kHz) survey data normally penetrates through this "fluff" layer to depict elevations of consolidated bottom material. Low frequency accuracies may vary depending on channel conditions and fathometer settings.

**Sheet Reference Number**  
 8 of 97