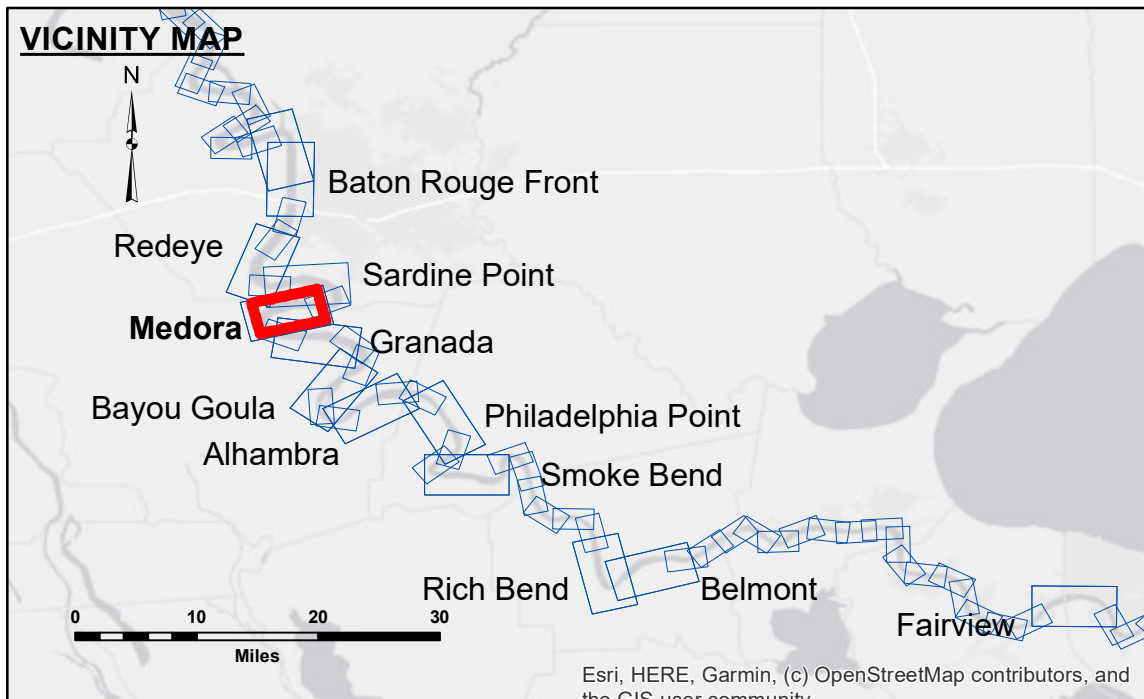


DISTRICT
 Access Considerations: The United States Government (USG) makes these data and the recipient accepts and uses them with the express understanding that the USG is not providing any warranty, either expressed or implied, concerning the accuracy, completeness, reliability, usability or suitability for any particular purpose of the information. The user is responsible for the results of their use. The recipient may not transfer these data or any information derived therefrom to others without the prior written consent of the USG. The recipient may not transfer these data to others without also transferring the Disclaimers. The information depicted on this map represents the results of a survey conducted on or after the date of the data collection. It is not intended to represent the general condition existing at that time.

U.S. ARMY CORPS OF ENGINEERS NEW ORLEANS DISTRICT			
Submitted:	Surveyed By: RYLAND/SIMMONS	Plotted By: BD	Checked By: AQJH
Recommended:	Chief, Survey Section		
Approved:	Chief, Waterways Maintenance Section		

MISSISSIPPI RIVER - B. R. TO GULF
MEDORA CROSSING
 MD_08_MED_20241216_CS
 16 December 2024



LEGEND		Color	Elevation
— Federal Navigation Channel	○ Cable Area	Blue	0' and above
— Federal Navigation Center Line	□ Placement Area	Yellow	0' to -5'
— As-built Pipeline/Cable	□ Anchorage Area	Orange	-5' to -10'
⋯ Unconfirmed Pipeline/Cable	⊗ Obstruction Point	Light Blue	-10' to -20'
— Project Depth Contour	★ Beacon, General	Medium Blue	-20' to -30'
	◆ Wrecks-Submerged	Dark Blue	-30' to -35'
	● Borrow Area	Light Purple	-35' to -40'
	● Shoalest Sounding**	Dark Purple	-40' to 45'
	● Red Navigation Buoy	Red	-45' and below
	● Green Navigation Buoy	Green	-45' and below

NOTES:

Horizontal Coordinate System:
 North American Datum of 1983 (NAD83), projected to the State Plane Coordinate System (SPCS), Louisiana South Zone. Distance units in U.S. Survey Feet.

Vertical Datum:
 Soundings are shown in feet and indicate depths below Low Water Reference Plane 2007 (NAVD). Distances on the Mississippi River, above and below Head of Passes are shown at 1 mile intervals.

The location of navigation aids are base on and provided by the U.S. Coast Guard and USACE crew. 2015 Aerial Photography data source: NAIP, USDA-FSA-APFO Aerial Photography Field Office.

Reference is N.O.A. Navigation Chart No. 11370.

** Shoalest Sounding per Quarter per Reach.

*** High frequency (200 kHz) survey data represents the first signal return at a sounding location and will include suspended solids, known as "fluff", if present. Low frequency (20 kHz) survey data normally penetrates through this "fluff" layer to depict elevations of consolidated bottom material. Low frequency accuracies may vary depending on channel conditions and fathometer settings.

LWRP:	2.1
Gage Reading:	BR:7.3 D:2.7 USED:5.90NAVD
Sea Conditions:	CALM
Vessel Name:	M/V LAFOURCHE
Survey Type:	CS
Sounding Frequency***:	HIGH

Feet
 0 500 1,000 1,500 2,000 2,500

Sheet Reference Number
 8 of 97

Revision Number:
 4.2-20200420