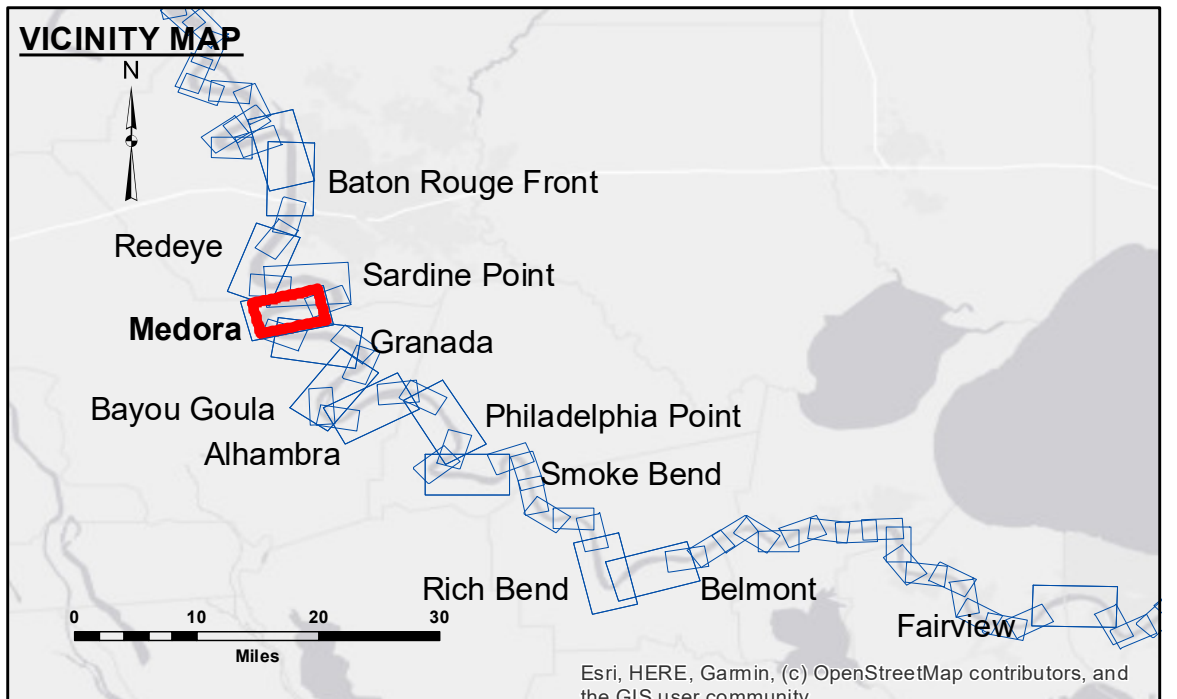


**DISCLAIMER:** The information depicted on this map represents the results of a survey conducted on the date of the survey. The user is responsible for the accuracy, completeness, and reliability of the information for their intended purpose. The information is provided for informational purposes only and is not intended for use in any other manner. The user should not rely on this information for any critical decision-making. The information is provided as is, without any warranty, express or implied. The user should consult with a qualified professional for any specific requirements. The information is not to be used for any purpose other than that for which it was intended. The user should not rely on this information for any critical decision-making. The information is provided as is, without any warranty, express or implied. The user should consult with a qualified professional for any specific requirements. The information is not to be used for any purpose other than that for which it was intended.

U.S. ARMY CORPS OF ENGINEERS NEW ORLEANS DISTRICT		
Submitted:	Surveyed By: RYLAND/SIMMONS	Plotted By: BD
Recommended:	Checked By: ADJH	Checked By: ADJH
Approved:	Other: Waterways Maintenance Section	

**MISSISSIPPI RIVER - B.R. TO GULF  
MEDORA CROSSING  
MD\_08\_MED\_MED\_20250113\_CS  
13 January 2025**



LEGEND	
--- Federal Navigation Channel	● Cable Area
— Federal Navigation Center Line	■ Placement Area
— As-built Pipeline/Cable	□ Anchorage Area
..... Unconfirmed Pipeline/Cable	⊗ Obstruction Point
— Project Depth Contour	✈ Wrecks-Submerged
□ Borrow Area	★ Beacon, General
● Shoalest Sounding**	♦ Red Navigation Buoy
★ Beacon, General	♦ Green Navigation Buoy
0' and above	
0' to -5'	
-5' to -10'	
-10' to -20'	
-20' to -30'	
-30' to -35'	
-35' to -40'	
-40' to -45'	
-45' and below	

LWRP: 2.1  
 Gage Reading: BR:23.5 D:15.0 USED:21.00 NAVD  
 Sea Conditions: CALM  
 Vessel Name: M/V LAFORCHE  
 Survey Type: CS  
 Sounding Frequency\*\*\*: HIGH

Horizontal Coordinate System:  
 North American Datum of 1983 (NAD83), projected to the State Plane  
 Coordinate System (SPCS), Louisiana South Zone. Distance units in U.S. Survey Feet.

Vertical Datum:  
 Soundings are shown in feet and indicate depths below Low Water Reference Plane 2007 (NAVD).  
 Distances on the Mississippi River, above and below Head of Passes are shown  
 at 1 mile intervals.

The location of navigation aids are base on and provided by the U.S. Coast Guard and USACE crew.  
 2015 Aerial Photography data source: NAIP, USDA-FSA-APFO Aerial Photography Field Office.

Reference is N.O.A.A. Navigation Chart No. 11370.  
 \*\* Shoalest Sounding per Quarter per Reach.  
 \*\*\* High frequency (200 kHz) survey data represents the first signal return at a sounding  
 location and will include suspended solids, known as "fluff", if present. Low frequency (20 kHz)  
 survey data normally penetrates through this "fluff" layer to depict elevations of consolidated bottom  
 material. Low frequency accuracies may vary depending on channel conditions and bathymeter  
 settings.

**Sheet Reference Number  
8 of 97**