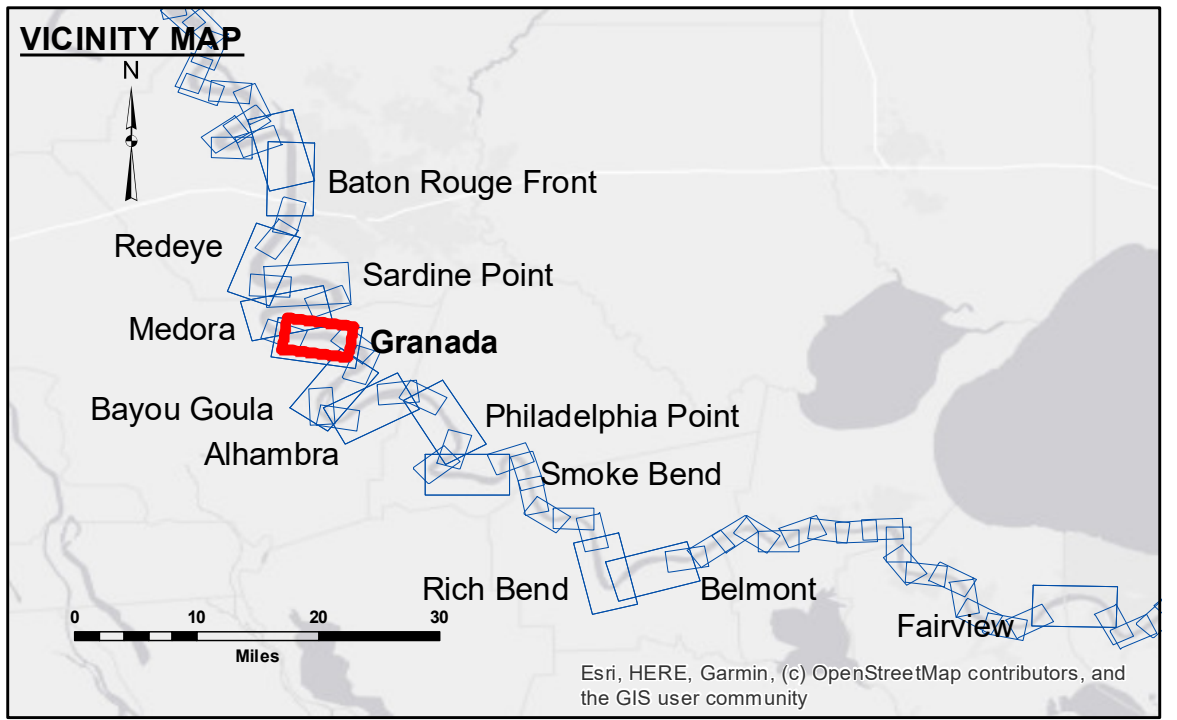


**DISCLAIMER:** The data represented on this map represents the results of a collection of data for a specific project. The data is not intended to be used for any other purpose. The user is responsible for the results of any use of this data. The data is not intended to be used for any other purpose. The user is responsible for the results of any use of this data. The data is not intended to be used for any other purpose. The user is responsible for the results of any use of this data.

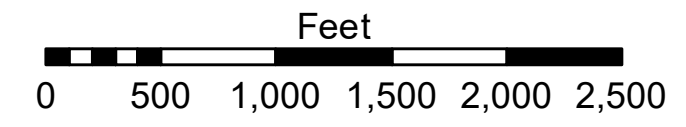
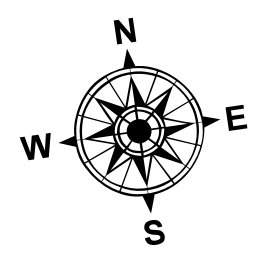
Submitted:	Surveyed By: DIS/SPS
Recommended:	Plotted By: BD
Approved:	Checked By: AC

**MISSISSIPPI RIVER - B.R. TO GULF**  
**GRANADA CROSSING**  
 MD\_10\_GRA\_20200213\_CS  
 13 February 2020



**LEGEND**

Federal Navigation Channel	Cable Area	Borrow Area	0' and above
Federal Navigation Center Line	Placement Area	Shoalest Sounding**	0' to -5'
As-built Pipeline/Cable	Anchorage Area	Beacon, General	-5' to -10'
Unconfirmed Pipeline/Cable	Obstruction Point	Red Navigation Buoy	-10' to -20'
Project Depth Contour	Wrecks-Submerged	Green Navigation Buoy	-20' to -30'
			-30' to -35'
			-35' to -40'
			-40' to 45'
			-45' and below



LWRP: 1.9  
 Gage Reading: BR:35.9 D:25.4 USED:31.1 NAVD  
 Sea Conditions: CALM  
 Vessel Name: M/V LAFOURCHE  
 Survey Type: CONDITION  
 Sounding Frequency\*\*\*: HIGH

**NOTES:**

Horizontal Coordinate System:  
 North American Datum of 1983 (NAD83), projected to the State Plane Coordinate System (SPCS), Louisiana South Zone. Distance units in U.S. Survey Feet.

Vertical Datum:  
 Soundings are shown in feet and indicate depths below Low Water Reference Plane 2007 (NAVD).

Distances on the Mississippi River, above and below Head of Passes are shown at 1 mile intervals.

The location of navigation aids are based on and provided by the U.S. Coast Guard and USACE crew.

2015 Aerial Photography data source: NAIP, USDA-FSA-APFO Aerial Photography Field Office.

Reference is N.O.A. Navigation Chart No. 11370.

\*\* Shoalest Sounding per Quarter per Reach.

\*\*\* High frequency (200 kHz) survey data represents the first signal return at a sounding location and will include suspended solids, known as "fluff", if present. Low frequency (20 kHz) survey data normally penetrates through this "fluff" layer to depict elevations of consolidated bottom material. Low frequency accuracies may vary depending on channel conditions and fathometer settings.

**Sheet Reference Number**  
 10 of 97

Revision Number:  
 4.0-20190702