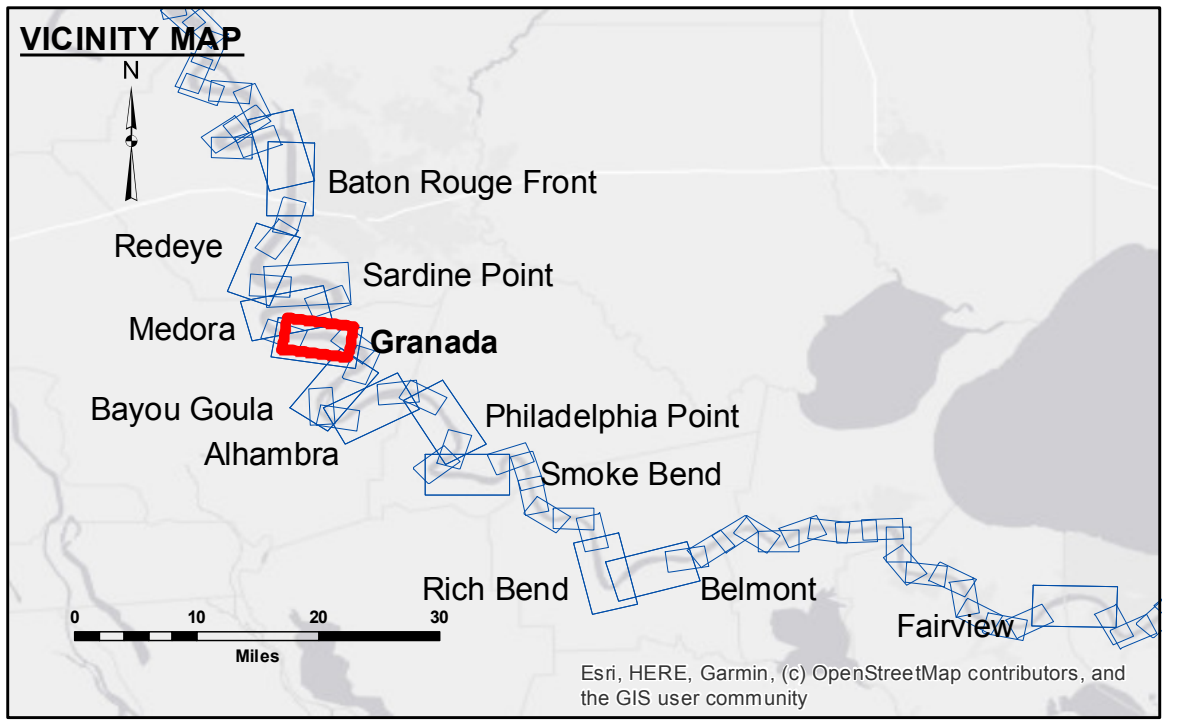


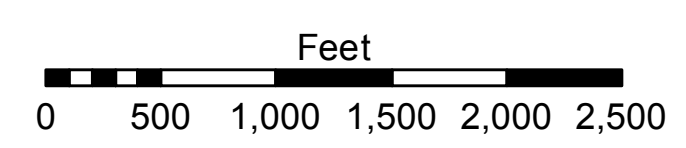
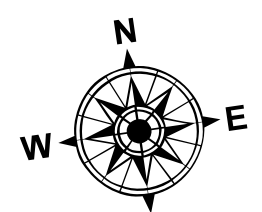
DISCLAIMER: The data represented on this map represents the results of a collection of data for a specific project. The data is not intended to be used for any purpose other than that for which it was collected. The user is responsible for the accuracy, reliability, usability, or suitability of the data for any particular purpose. The user is responsible for the accuracy, reliability, usability, or suitability of the data for any particular purpose. The user is responsible for the accuracy, reliability, usability, or suitability of the data for any particular purpose. The user is responsible for the accuracy, reliability, usability, or suitability of the data for any particular purpose.

Submitted:	Surveyed By:
Recommended:	DS/PS
Approved:	Printed By:
	BD
	Checked By:
	AC

**MISSISSIPPI RIVER - B.R. TO GULF
GRANADA CROSSING
MD_10_GRA_20210623_CS
23 June 2021**



LEGEND		SOUNDING DEPTHS	
--- Federal Navigation Channel	○ Cable Area	Green	0' and above
— Federal Navigation Center Line	□ Placement Area	Yellow	0' to -5'
— As-built Pipeline/Cable	□ Anchorage Area	Orange	-5' to -10'
..... Unconfirmed Pipeline/Cable	⊗ Obstruction Point	Light Blue	-10' to -20'
— Project Depth Contour	★ Beacon, General	Blue	-20' to -30'
	◆ Wrecks-Submerged	Dark Blue	-30' to -35'
		Light Purple	-35' to -40'
		Dark Purple	-40' to -45'
		White	-45' and below
		Blue Box	Borrow Area
		Yellow Dot	Shoalest Sounding**



LWRP: 1.9
Gage Reading: BR:27.2 D:17.8 USED:23.1 NAVD
Sea Conditions: CALM
Vessel Name: M/V LAFORCHE
Survey Type: CS
Sounding Frequency***: HIGH

NOTES:
Horizontal Coordinate System: North American Datum of 1983 (NAD83), projected to the State Plane Coordinate System (SPCS), Louisiana South Zone. Distance units in U.S. Survey Feet.
Vertical Datum: Soundings are shown in feet and indicate depths below Low Water Reference Plane 2007 (NAVD).
Distances on the Mississippi River, above and below Head of Passes are shown at 1 mile intervals.
The location of navigation aids are based on and provided by the U.S. Coast Guard and USACE crew.
2015 Aerial Photography data source: NAIP, USDA-FSA-APFO Aerial Photography Field Office.
Reference is N.O.A. Navigation Chart No. 11370.
** Shoalest Sounding per Quarter per Reach.
*** High frequency (200 kHz) survey data represents the first signal return at a sounding location and will include suspended solids, known as "fluff", if present. Low frequency (20 kHz) survey data normally penetrates through this "fluff" layer to depict elevations of consolidated bottom material. Low frequency accuracies may vary depending on channel conditions and fathometer settings.

**Sheet Reference Number
10 of 97**