

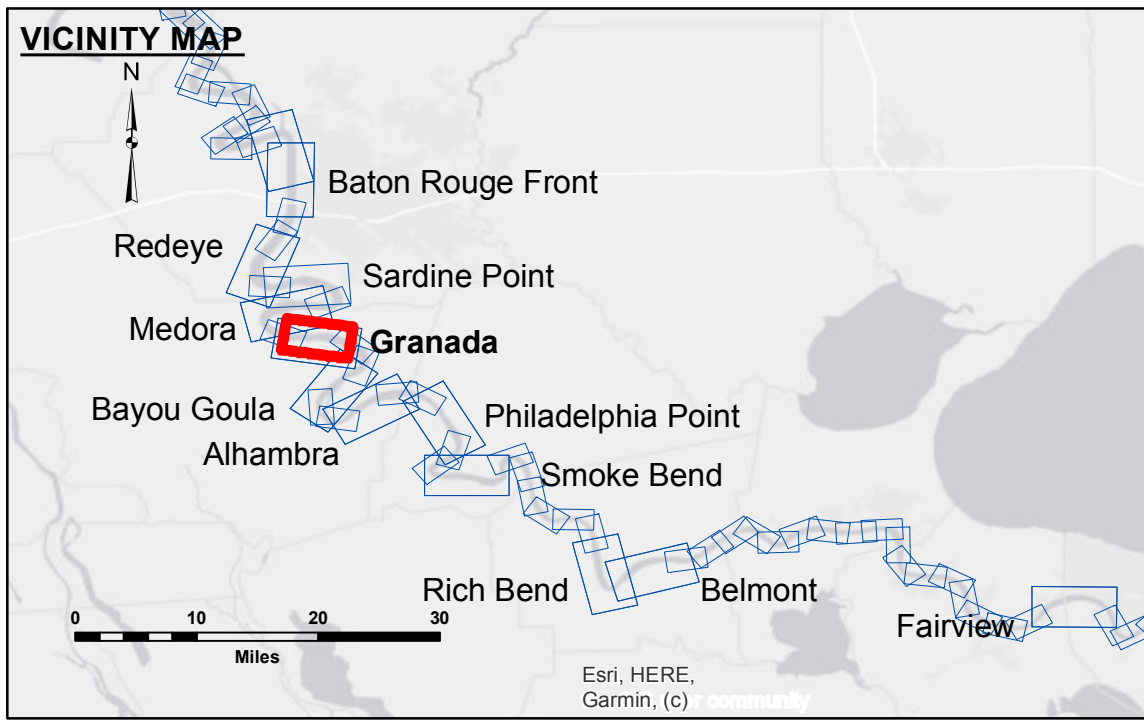
**Access/Availability:** The United States Government furnishes these data and the recipient accepts and uses them with the express understanding that they are not to be distributed, reproduced, or used for any purpose other than that for which they were originally prepared. The user is responsible for the results of any use of these data. The application of the data for other than its intended purpose is at the user's risk. The user is responsible for the results of any use of these data. The application of the data for other than its intended purpose is at the user's risk.

**Disclaimer:** The information depicted on this map represents the results of a survey conducted by the United States Army Corps of Engineers. The information is provided for informational purposes only and does not constitute a warranty or guarantee of accuracy. The user is responsible for the results of any use of these data. The application of the data for other than its intended purpose is at the user's risk.

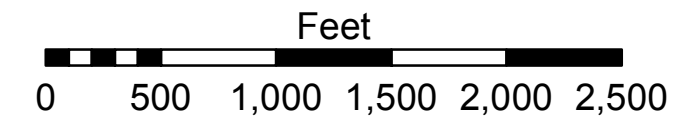
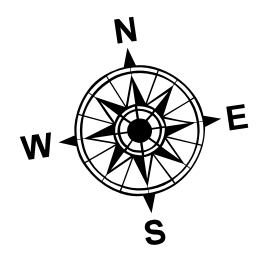
|  |                    |
|--|--------------------|
| Submitted:                                     | Surveyed By: DS/JA |
| Recommended: Chief, Survey Section             | Plotted By: BD     |
| Approved: Chief, Waterways Maintenance Section | Checked By: AC     |

U.S. ARMY CORPS OF ENGINEERS  
NEW ORLEANS DISTRICT

**MISSISSIPPI RIVER - B.R. TO GULF**  
**GRANADA CROSSING**  
**MD\_10\_GRA\_20211109\_AD**  
**09 November 2021**



| LEGEND                           |                       | Depth Contours   |                |
|----------------------------------|-----------------------|------------------|----------------|
| --- Federal Navigation Channel   | ○ Cable Area          | █ 0' and above   | █ 0' to -5'    |
| — Federal Navigation Center Line | ▭ Placement Area      | █ -5' to -10'    | █ -10' to -20' |
| — As-built Pipeline/Cable        | ▭ Anchorage Area      | █ -20' to -30'   | █ -30' to -35' |
| ..... Unconfirmed Pipeline/Cable | ⊗ Obstruction Point   | █ -35' to -40'   | █ -40' to -45' |
| — Project Depth Contour          | ⚓ Wrecks-Submerged    | █ -45' and below |                |
| ▭ Borrow Area                    | ★ Beacon, General     |                  |                |
| ● Shoalest Sounding**            | ◆ Red Navigation Buoy |                  |                |
| ◆ Green Navigation Buoy          |                       |                  |                |



LWRP: 1.9  
Gage Reading: BR:13.0 D:7.0 USED:10.2 NAVD  
Sea Conditions: CALM  
Vessel Name: M/V VALENTOUR  
Survey Type: CONDITION  
Sounding Frequency\*\*\*: HIGH

**NOTES:**

Horizontal Coordinate System: North American Datum of 1983 (NAD83), projected to the State Plane Coordinate System (SPCS), Louisiana South Zone. Distance units in U.S. Survey Feet.

Vertical Datum: Soundings are shown in feet and indicate depths below Low Water Reference Plane 2007 (NAVD). Distances on the Mississippi River, above and below Head of Passes are shown at 1 mile intervals.

The location of navigation aids are based on and provided by the U.S. Coast Guard and USACE crew. 2015 Aerial Photography data source: NAIP, USDA-FSA-APFO Aerial Photography Field Office.

Reference is N.O.A. Navigation Chart No. 11370.

\*\* Shoalest Sounding per Quarter per Reach.

\*\*\* High frequency (200 kHz) survey data represents the first signal return at a sounding location and will include suspended solids, known as "fluff", if present. Low frequency (20 kHz) survey data normally penetrates through this "fluff" layer to depict elevations of consolidated bottom material. Low frequency accuracies may vary depending on channel conditions and bathymeter settings.

**Sheet Reference Number**  
**10 of 97**

Revision Number: 4.2-20210420