

Accession Number: 20220401_CS
Project Name: GRANADA CROSSING
Date: 01 April 2022

Legend:
 - Federal Navigation Channel
 - Federal Navigation Center Line
 - As-built Pipeline/Cable
 - Unconfirmed Pipeline/Cable
 - Project Depth Contour
 - Cable Area
 - Placement Area
 - Anchorage Area
 - Obstruction Point
 - Wrecks-Submerged
 - Borrow Area
 - Shoalest Sounding**
 - Beacon, General
 - Red Navigation Buoy
 - Green Navigation Buoy

Depth Contours:
 0' and above
 0' to -5'
 -5' to -10'
 -10' to -20'
 -20' to -30'
 -30' to -35'
 -35' to -40'
 -40' to -45'
 -45' and below

Notes:
 LWRP: 1.9
 Gage Reading: BR:33.7 D:23.2 USED:28.90 NAVD
 Sea Conditions: CALM
 Vessel Name: M/V VALENTOUR
 Survey Type: CONDITION
 Sounding Frequency***: HIGH

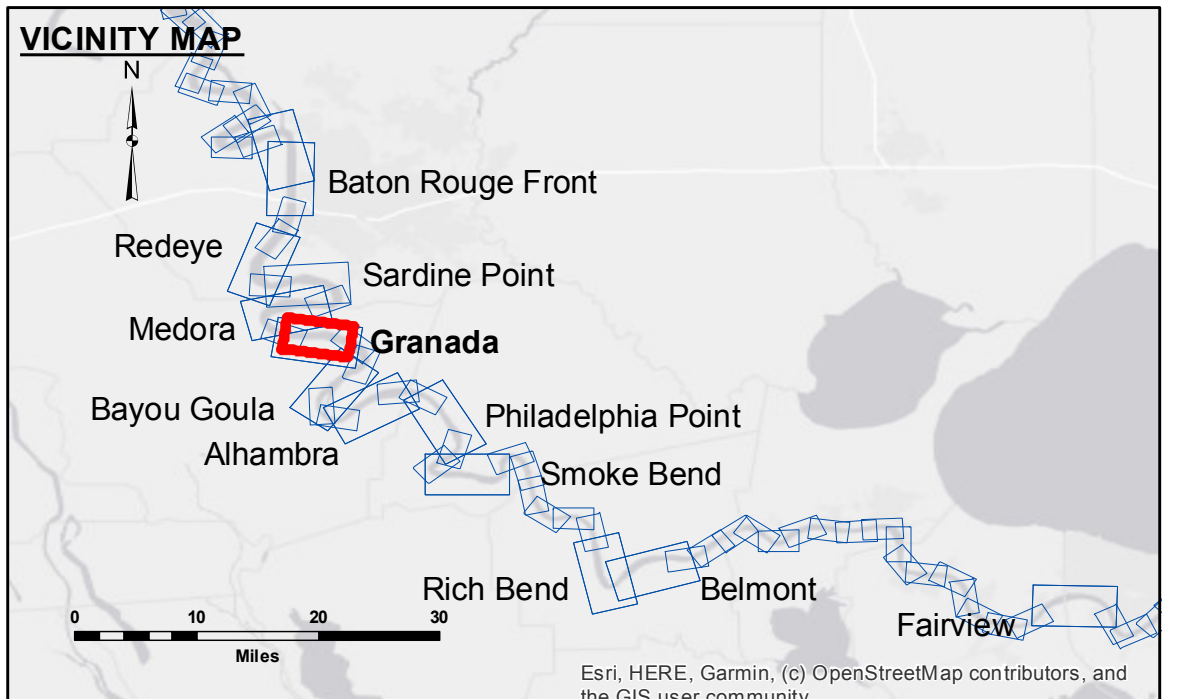
Horizontal Coordinate System:
 North American Datum of 1983 (NAD83), projected to the State Plane Coordinate System (SPCS), Louisiana South Zone. Distance units in U.S. Survey Feet.

Vertical Datum:
 Soundings are shown in feet and indicate depths below Low Water Reference Plane 2007 (NAVD).
 Distances on the Mississippi River, above and below Head of Passes are shown at 1 mile intervals.

The location of navigation aids are base on and provided by the U.S. Coast Guard and USACE crew.
 2015 Aerial Photography data source: NAIP, USDA-FSA-APFO Aerial Photography Field Office.

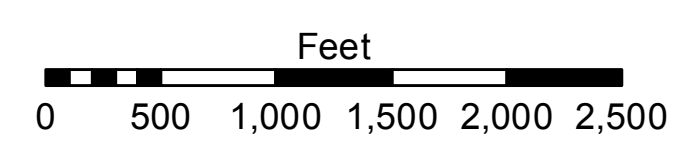
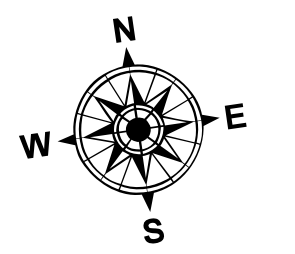
Reference is N.O.A.A. Navigation Chart No. 11370.
 *** Shoalest Sounding per Quarter per Reach.
 *** High frequency (200 kHz) survey data represents the first signal return at a sounding location and will include suspended solids, known as "fluff", if present. Low frequency (20 kHz) survey data normally penetrates through this "fluff" layer to depict elevations of consolidated bottom material. Low frequency accuracies may vary depending on channel conditions and fathometer settings.

| | |
|--------------------------------------------------------|--------------|
| U.S. ARMY CORPERS OF ENGINEERS NEW ORLEANS DISTRICT | |
| Submitted By: | RYLAND/ADAMS |
| Recommended By: | BD |
| Approved By: | AC |



LEGEND

- Federal Navigation Channel
- Federal Navigation Center Line
- As-built Pipeline/Cable
- Unconfirmed Pipeline/Cable
- Project Depth Contour
- Cable Area
- Placement Area
- Anchorage Area
- Obstruction Point
- Wrecks-Submerged
- Borrow Area
- Shoalest Sounding**
- Beacon, General
- Red Navigation Buoy
- Green Navigation Buoy



MISSISSIPPI RIVER - B.R. TO GULF
GRANADA CROSSING
MD_10_GRA_20220401_CS
01 April 2022

Sheet Reference Number
10 of 97