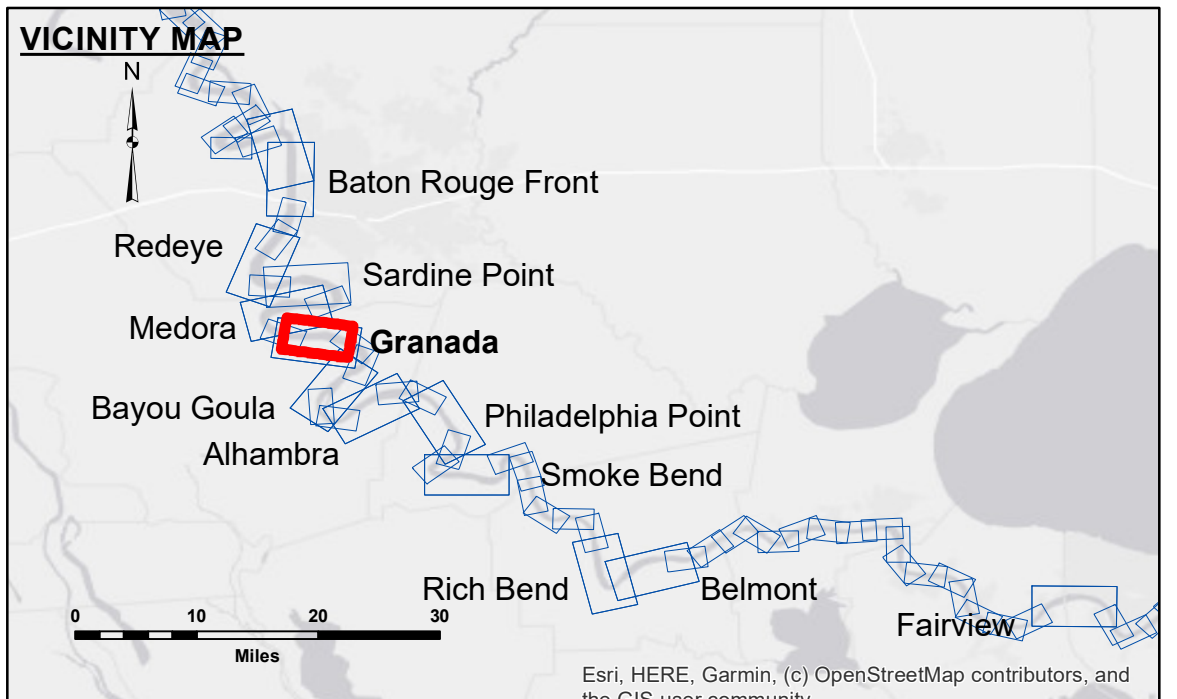


Accession: The United States Government makes these data and the recipient accepts and uses them with the express understanding that the data are not to be used for any purpose other than that for which they were originally collected, and that the data are not to be used for any purpose other than that for which they were originally collected.

Disclaimer: The information depicted on this map represents the results of a survey conducted by the United States Army Corps of Engineers. The information is provided for informational purposes only and is not to be used for any purpose other than that for which it was originally collected. The user is responsible for the accuracy, completeness, reliability, usability or suitability for any particular purpose of the information. The user is responsible for the accuracy, completeness, reliability, usability or suitability for any particular purpose of the information. The user is responsible for the accuracy, completeness, reliability, usability or suitability for any particular purpose of the information.

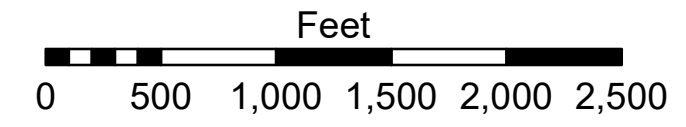
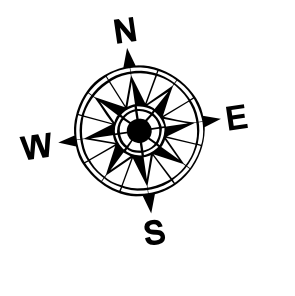
| | | |
|--|--------------------------------------|-------------------|
| U.S. ARMY CORPS OF ENGINEERS NEW ORLEANS DISTRICT | | |
| Submitted: | Surveyed By: RYLAND/MOLLERE | Plotted By: JH |
| Recommended: | Chief, Survey Section | Checked By: JH |
| Approved: | Chief, Waterways Maintenance Section | |

MISSISSIPPI RIVER - B.R. TO GULF
GRANADA CROSSING
MD_10_GRA_20220608_CS
08 June 2022



LEGEND

| | | | |
|----------------------------------|---------------------|-------------------------|------------------|
| --- Federal Navigation Channel | ○ Cable Area | □ Borrow Area | ■ 0' and above |
| — Federal Navigation Center Line | □ Placement Area | ● Shoalest Sounding** | ■ 0' to -5' |
| — As-built Pipeline/Cable | □ Anchorage Area | ★ Beacon, General | ■ -5' to -10' |
| Unconfirmed Pipeline/Cable | ⊗ Obstruction Point | ◆ Red Navigation Buoy | ■ -10' to -20' |
| — Project Depth Contour | ⚓ Wrecks-Submerged | ◆ Green Navigation Buoy | ■ -20' to -30' |
| | | | ■ -30' to -35' |
| | | | ■ -35' to -40' |
| | | | ■ -40' to -45' |
| | | | ■ -45' and below |



LWRP: 1.9
 Gage Reading: BR:27.8 D:18.3 USED: 23.50 NAVD
 Sea Conditions: CALM
 Vessel Name: M/V OB 167
 Survey Type: CONDITION
 Sounding Frequency***: HIGH

NOTES:

Horizontal Coordinate System: North American Datum of 1983 (NAD83), projected to the State Plane Coordinate System (SPCS), Louisiana South Zone. Distance units in U.S. Survey Feet.

Vertical Datum: Soundings are shown in feet and indicate depths below Low Water Reference Plane 2007 (NAVD).

Distances on the Mississippi River, above and below Head of Passes are shown at 1 mile intervals.

The location of navigation aids are based on and provided by the U.S. Coast Guard and USACE crew.

2015 Aerial Photography data source: NAIP, USDA-FSA-APFO Aerial Photography Field Office.

Reference is N.O.A. Navigation Chart No. 11370.

** Shoalest Sounding per Quarter per Reach.

*** High frequency (200 kHz) survey data represents the first signal return at a sounding location and will include suspended solids, known as "fluff", if present. Low frequency (20 kHz) survey data normally penetrates through this "fluff" layer to depict elevations of consolidated bottom material. Low frequency accuracies may vary depending on channel conditions and fathometer settings.

Sheet Reference Number
10 of 97