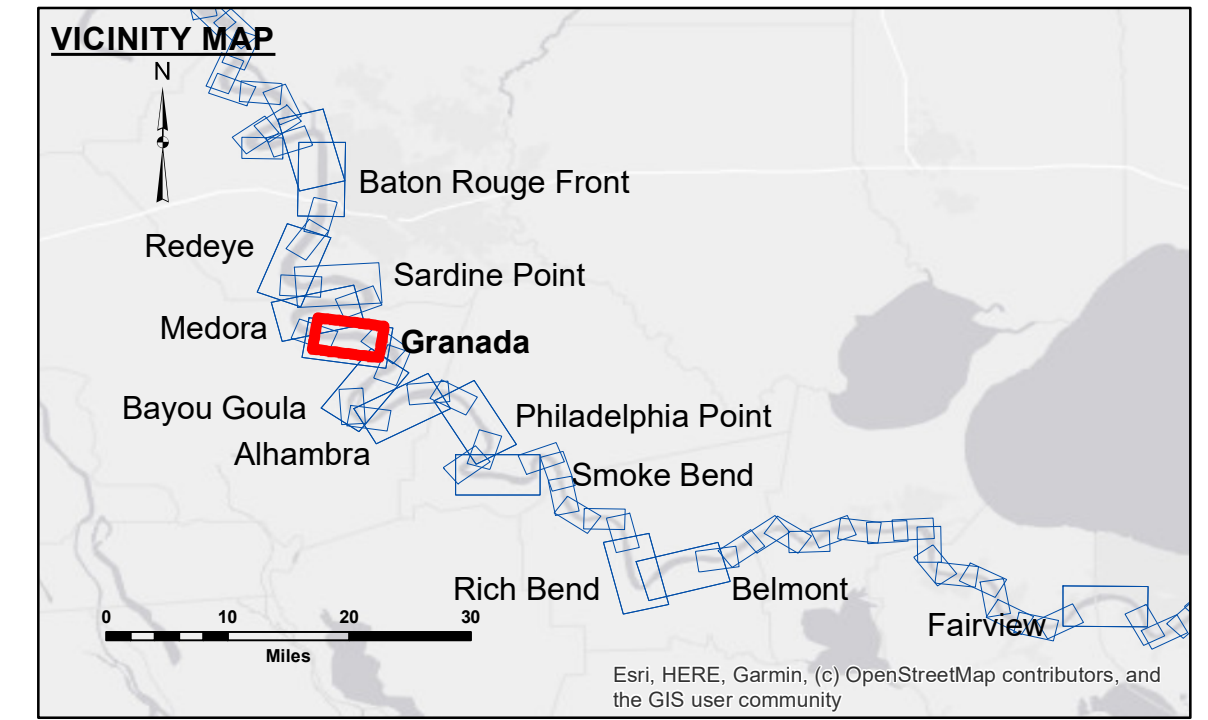


DISCLAIMER
Access Constraints: The United States Government furnishes these data and the recipient accepts and uses them with the express understanding that the data are for informational purposes only and are not to be used for any purpose other than that for which they were originally intended. The user is responsible for the results of any use of the data. The application of the data for other than its intended purpose is at the user's risk. The Corps of Engineers accepts no responsibility for changes in the hydrographical conditions which develop after the date of the survey. The information depicted on this map represents the results of a survey conducted on or about the date of the survey. The Corps of Engineers does not warrant the accuracy of the information depicted on this map. The recipient may not transfer these data to others without the written consent of the Corps of Engineers. The information depicted on this map represents the results of a survey conducted on or about the date of the survey. The Corps of Engineers does not warrant the accuracy of the information depicted on this map. The recipient may not transfer these data to others without the written consent of the Corps of Engineers.

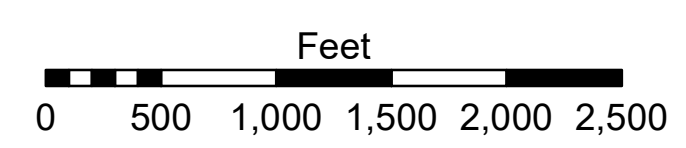
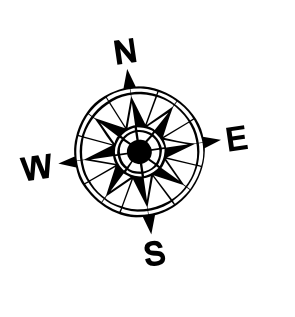
Submitted	Surveyed By: RYLAND/SIMMONS
Recommended: Chief Survey Section	Plotted By: JH
Approved: Chief Waterways Maintenance Section	Checked By: JH

U.S. ARMY CORPS OF ENGINEERS
NEW ORLEANS DISTRICT

MISSISSIPPI RIVER - B.R. TO GULF
GRANADA CROSSING
MD_10_GRA_20240111_CS
11 January 2024



LEGEND			
--- Federal Navigation Channel	● Cable Area	□ Borrow Area	0' and above
— Federal Navigation Center Line	■ Placement Area	● Shoalest Sounding**	0' to -5'
— As-built Pipeline/Cable	⊠ Anchorage Area	★ Beacon, General	-5' to -10'
⋯ Unconfirmed Pipeline/Cable	⊠ Obstruction Point	◆ Red Navigation Buoy	-10' to -20'
— Project Depth Contour	⚓ Wrecks-Submerged	◆ Green Navigation Buoy	-20' to -30'
			-30' to -35'
			-35' to -40'
			-40' to -45'
			-45' and below



LWRP: 1.9
Gage Reading: BR:8.4 D:4.1 VRN: 6.10 NAVD AVG
Sea Conditions: CALM
Vessel Name: LAFOURCHE
Survey Type: CS
Sounding Frequency***: HIGH

NOTES:
Horizontal Coordinate System: North American Datum of 1983 (NAD83), projected to the State Plane Coordinate System (SPCS), Louisiana South Zone. Distance units in U.S. Survey Feet.
Vertical Datum: Soundings are shown in feet and indicate depths below Low Water Reference Plane 2007 (NAVD).
Distances on the Mississippi River, above and below Head of Passes are shown at 1 mile intervals.
The location of navigation aids are based on and provided by the U.S. Coast Guard and USACE crew.
2015 Aerial Photography data source: NAIP, USDA-FSA-APFO Aerial Photography Field Office.
Reference is N.O.A. Navigation Chart No. 11370.
** Shoalest Sounding per Quarter per Reach.
*** High frequency (200 kHz) survey data represents the first signal return at a sounding location and will include suspended solids, known as "fluff", if present. Low frequency (20 kHz) survey data normally penetrates through this "fluff" layer to depict elevations of consolidated bottom material. Low frequency accuracies may vary depending on channel conditions and fathometer settings.

Sheet Reference Number
10 of 97