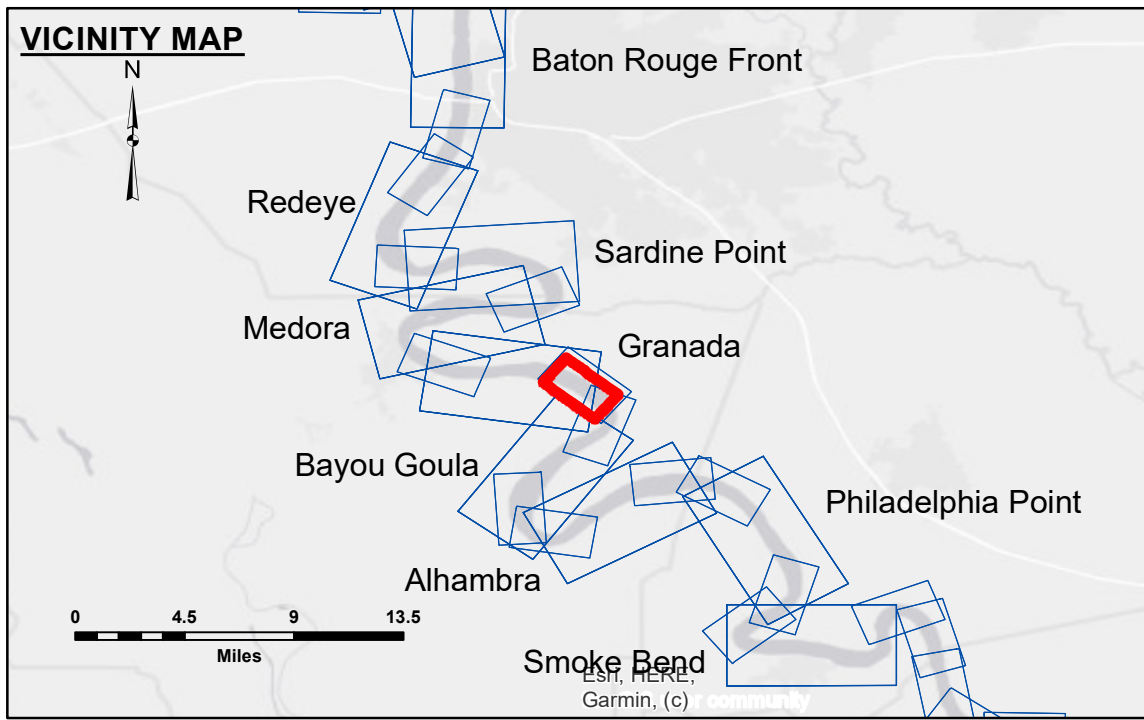


DISCLAIMER
 The data represented on this map represents the results of a survey conducted by the U.S. Army Corps of Engineers. The data is only valid for the intended use, control, time and accuracy specifications. The user is responsible for the results of the application of the data for other than its intended purpose.
 Data Constraints: Hydrographic survey data is subject to change due to several factors including, but not limited to, dredging, shoaling, and other changes in the hydrographic conditions which develop after the date of the survey. The U.S. Army Corps of Engineers does not warrant the accuracy of the data for use in any other manner than that intended for its use. The information depicted on this map represents the results of a survey conducted by the U.S. Army Corps of Engineers. The data is only valid for the intended use, control, time and accuracy specifications. The user is responsible for the results of the application of the data for other than its intended purpose.

U.S. ARMY CORPS OF ENGINEERS NEW ORLEANS DISTRICT		
Submitted:	Surveyed By: RYLAND/ADAMS	Checked By: AC
Recommended:	Plotted By: BD	
Approved:	Chief, Survey Section	
	Chief, Waterways Maintenance Section	

**MISSISSIPPI RIVER - B.R. TO GULF
 ST GABRIEL - SHEET 1
 MD_11_SG1X_20210331_CS
 31 March 2021**



LEGEND

--- Federal Navigation Channel	○ Cable Area	■ Shoaling Area	■ 0' and above
— Federal Navigation Center Line	□ Placement Area	● Shoalest Sounding**	■ 0' to -5'
— As-built Pipeline/Cable	⊠ Anchorage Area	★ Beacon, General	■ -5' to -10'
..... Unconfirmed Pipeline/Cable	⊗ Obstruction Point	◆ Red Navigation Buoy	■ -10' to -20'
— Project Depth Contour	✶ Wrecks-Submerged	◆ Green Navigation Buoy	■ -20' to -30'
			■ -30' to -35'
			■ -35' to -40'
			■ -40' to 45'
			■ -45' and below

NOTES:
 Horizontal Coordinate System:
 North American Datum of 1983 (NAD83), projected to the State Plane Coordinate System (SPCS), Louisiana South Zone. Distance units in U.S. Survey Feet.
 Vertical Datum:
 Soundings are shown in feet and indicate depths below Low Water Reference Plane 2007 (NAVD).
 Distances on the Mississippi River, above and below Head of Passes are shown at 1 mile intervals.
 The location of navigation aids are base on and provided by the U.S. Coast Guard and USACE crew.
 2017 Aerial Photography data source: NAIP, USDA-FSA-APFO Aerial Photography Field Office.
 Reference is N.O.A. Navigation Chart No. 11370.
 ** Shoalest Sounding per Quarter per Reach.
 *** High frequency (200 kHz) survey data represents the first signal return at a sounding location and will include suspended solids, known as "fluff", if present. Low frequency (20 kHz) survey data normally penetrates through this "fluff" layer to depict elevations of consolidated bottom material. Low frequency accuracies may vary depending on channel conditions and fathometer settings.

LWRP: 1.9
 Gage Reading: BR:35.8 D:24.9 USED:30.40 NAVD
 Sea Conditions: CALM
 Vessel Name: OB-189
 Survey Type: CONDITION
 Sounding Frequency***: HIGH

Feet
 0 500 1,000 1,500 2,000 2,500