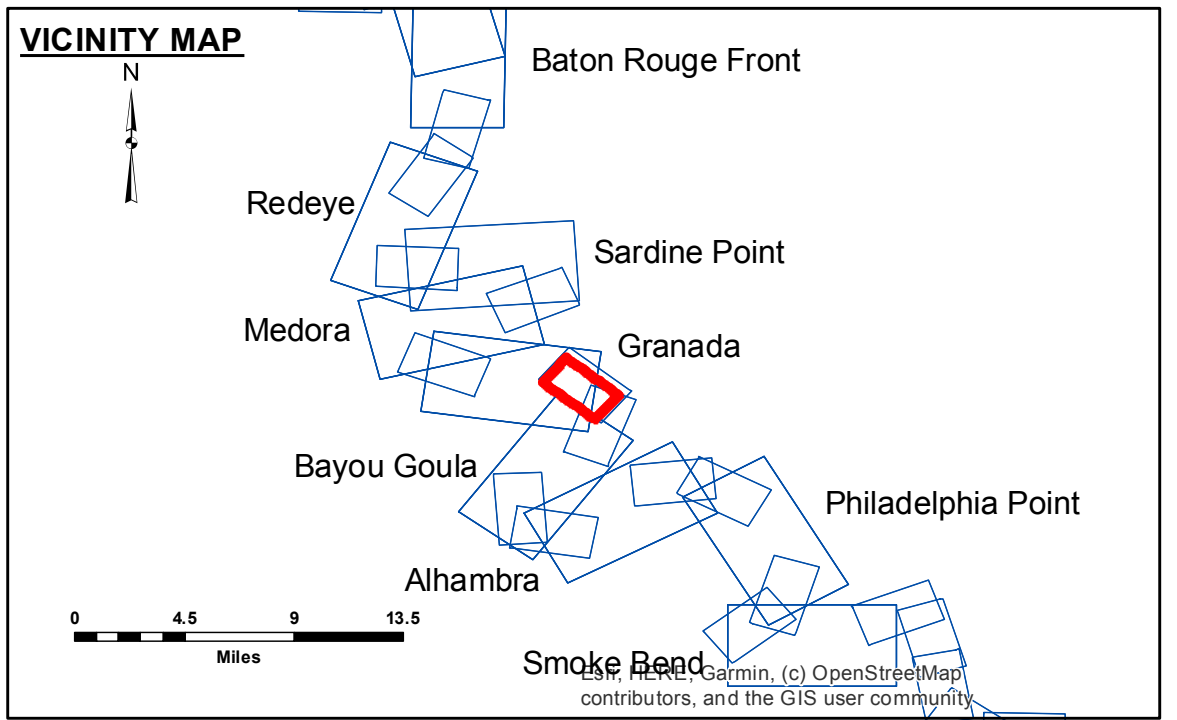


DISCLAIMER: The data represents the results of data collection/processing for a specific US Army Corps of Engineers project. The user is responsible for the results and accuracy of the data. The application of the data for other than its intended purpose is not recommended. Data collected for hydrographic survey data is subject to change rapidly due to several factors including but not limited to dredging, channel migration, and changes in the hydrographic conditions which develop after the date of the survey. The information depicted on this map represents the results of a survey conducted on the date shown and is not intended to represent the general condition existing at that time.

U.S. ARMY CORPS OF ENGINEERS NEW ORLEANS DISTRICT	
Surveyed By: RYLAND/ADAMS	Plotted By: JH
Submitted:	Checked By: JH
Recommended: Chief, Survey Section	Approved: Chief, Waterways Maintenance Section

**MISSISSIPPI RIVER - B.R. TO GULF
ST GABRIEL - SHEET 1
MD_11_SG1X_20220802_CS
02 August 2022**

**Sheet Reference Number
11 of 97**



LEGEND

--- Federal Navigation Channel	○ Cable Area	■ Shoaling Area	■ 0' and above
— Federal Navigation Center Line	□ Placement Area	● Shoalest Sounding**	■ 0' to -5'
— As-built Pipeline/Cable	□ Anchorage Area	★ Beacon, General	■ -5' to -10'
..... Unconfirmed Pipeline/Cable	⊗ Obstruction Point	◆ Red Navigation Buoy	■ -10' to -20'
— Project Depth Contour	⚓ Wrecks-Submerged	◆ Green Navigation Buoy	■ -20' to -30'
			■ -30' to -35'
			■ -35' to -40'
			■ -40' to 45'
			■ -45' and below

NOTES:

Horizontal Coordinate System:
North American Datum of 1983 (NAD83), projected to the State Plane Coordinate System (SPCS), Louisiana South Zone. Distance units in U.S. Survey Feet.

Vertical Datum:
Soundings are shown in feet and indicate depths below Low Water Reference Plane 2007 (NAVD). Distances on the Mississippi River, above and below Head of Passes are shown at 1 mile intervals.

The location of navigation aids are base on and provided by the U.S. Coast Guard and USACE crew. 2017 Aerial Photography data source: NAIP, USDA-FSA-APFO Aerial Photography Field Office. Reference is N.O.A.A. Navigation Chart No. 11370.

** Shoalest Sounding per Quarter per Reach.

*** High frequency (200 kHz) survey data represents the first signal return at a sounding location and will include suspended solids, known as "fluff", if present. Low frequency (20 kHz) survey data normally penetrates through this "fluff" layer to depict elevations of consolidated bottom material. Low frequency accuracies may vary depending on channel conditions and fathometer settings.

LWRP: 1.9
Gage Reading: BR:9.0 D:4.8 USED: 6.90 NAVD
Sea Conditions: CALM
Vessel Name: M/V OB 189
Survey Type: CONDITION
Sounding Frequency***: HIGH