

DISCLAIMER: The United States Government furnishes these data and the recipient accepts and uses them with the express understanding that the data are provided for informational purposes only and are not to be used for any purpose other than that for which they were collected. The user is responsible for the results of any application of the data for other than its intended purpose.

DISTRIBUTION LIABILITY: The data represents the results of data collection for a specific US Army Corps of Engineers project. It is only valid for its intended use, content, time and accuracy specifications. The user is responsible for the results of any application of the data for other than its intended purpose.

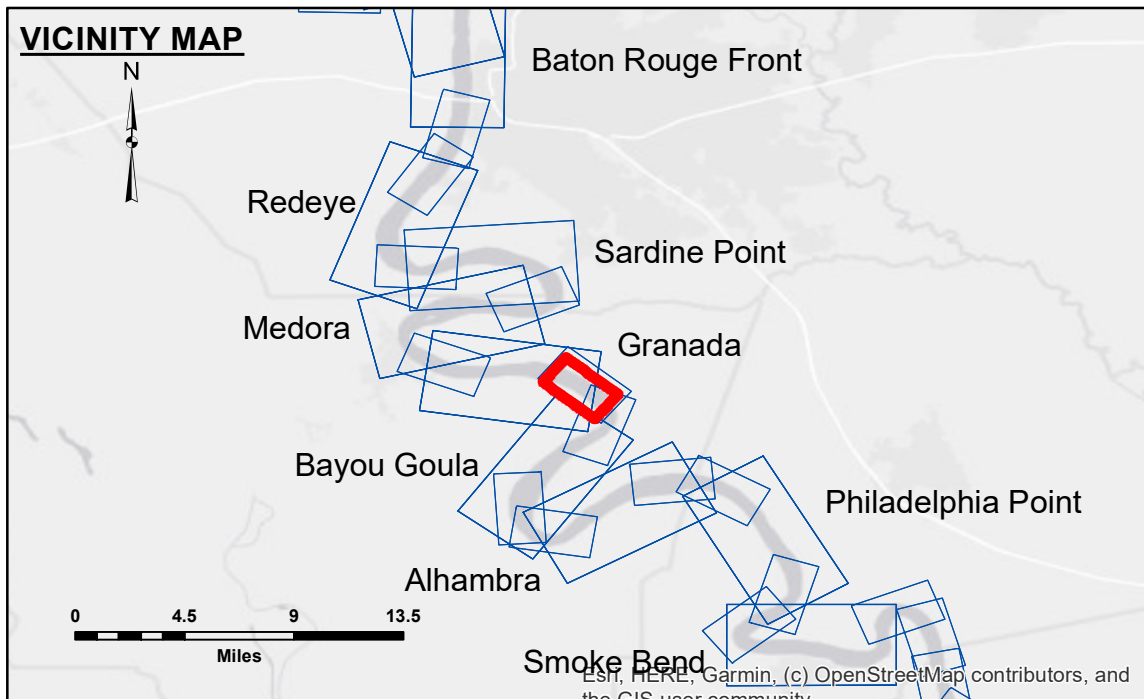
DATA CONSTRAINTS: Hydrographic survey data is subject to change rapidly due to several factors including but not limited to changing hydrographic conditions, changes in channel conditions, and changes in the hydrographic conditions which develop after the date of the survey. Prudent mariners should not rely solely upon this information.

Submitted:	Surveyed By: RYLAND/SIMMONS
Recommended:	Plotted By: JH
Approved:	Checked By: JH

U.S. ARMY CORPS OF ENGINEERS
NEW ORLEANS DISTRICT

MISSISSIPPI RIVER - B.R. TO GULF
ST GABRIEL - SHEET 1
MD_11_SG1X_20240111_CS
11 January 2024

Sheet Reference Number
11 of 97



LEGEND

- - - Federal Navigation Channel	○ Cable Area	■ Shoaling Area	0' and above
- - - Federal Navigation Center Line	□ Placement Area	● Shoalest Sounding**	0' to -5'
— As-built Pipeline/Cable	⊗ Anchorage Area	★ Beacon, General	-5' to -10'
⋯ Unconfirmed Pipeline/Cable	⊗ Obstruction Point	◆ Red Navigation Buoy	-10' to -20'
— Project Depth Contour	⊗ Wrecks-Submerged	◆ Green Navigation Buoy	-20' to -30'
			-30' to -35'
			-35' to -40'
			-40' to 45'
			-45' and below

LWRP: 1.9
 Gage Reading: BR:8.5 D:3.8 VRN: 5.74 NAVD AVG
 Sea Conditions: CALM
 Vessel Name: LAFORUCHE
 Survey Type: CS
 Sounding Frequency***: HIGH

NOTES:
 Horizontal Coordinate System: North American Datum of 1983 (NAD83), projected to the State Plane Coordinate System (SPCS), Louisiana South Zone. Distance units in U.S. Survey Feet.
 Vertical Datum: Soundings are shown in feet and indicate depths below Low Water Reference Plane 2007 (NAVD).
 Distances on the Mississippi River, above and below Head of Passes are shown at 1 mile intervals.
 The location of navigation aids are base on and provided by the U.S. Coast Guard and USACE crew.
 2017 Aerial Photography data source: NAIP, USDA-FSA-APFO Aerial Photography Field Office.
 Reference is N.O.A. Navigation Chart No. 11370.
 ** Shoalest Sounding per Quarter per Reach.
 *** High frequency (200 kHz) survey data represents the first signal return at a sounding location and will include suspended solids, known as "fluff", if present. Low frequency (20 kHz) survey data normally penetrates through this "fluff" layer to depict elevations of consolidated bottom material. Low frequency accuracies may vary depending on channel conditions and fathometer settings.