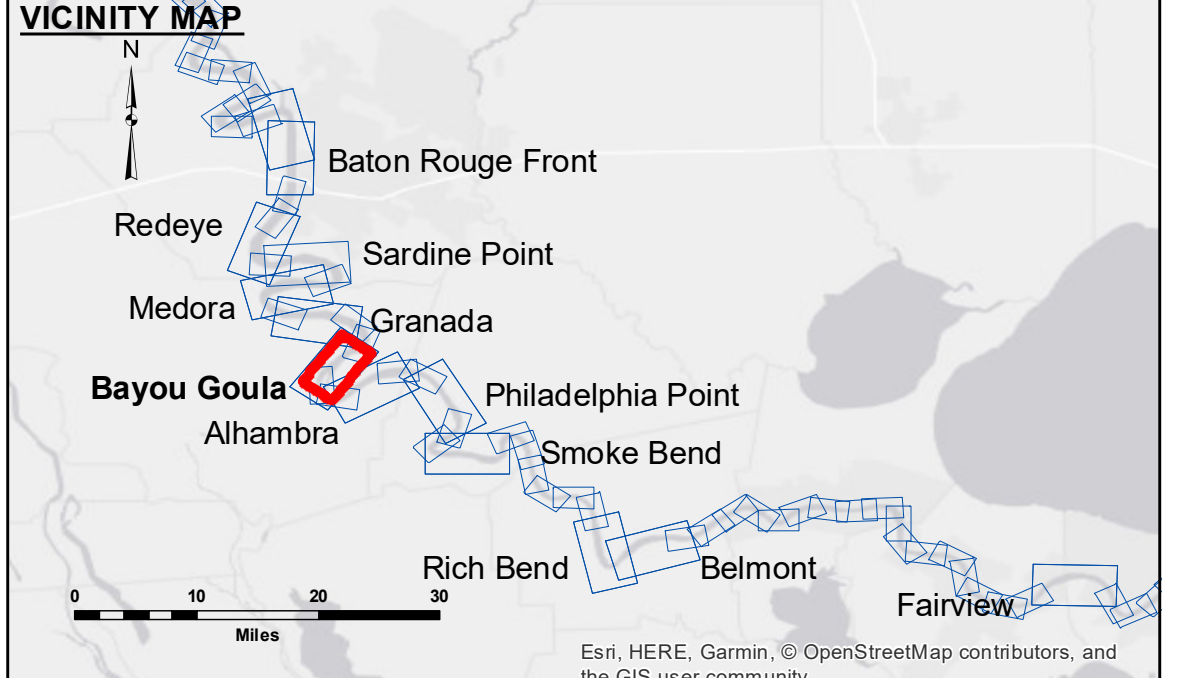


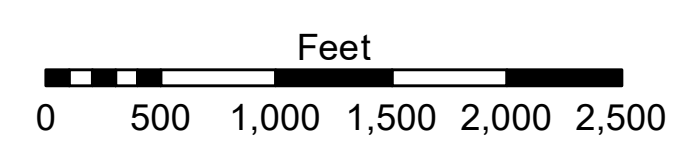
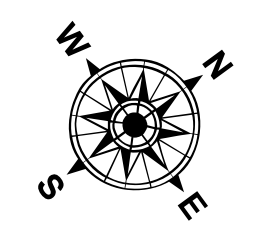
DISCLAIMER: The data represented on this map represents the results of a survey conducted by the U.S. Army Corps of Engineers. The user is responsible for the accuracy, completeness, reliability, usability, or suitability for any particular purpose of the data. The user is responsible for the accuracy, completeness, reliability, usability, or suitability for any particular purpose of the data. The user is responsible for the accuracy, completeness, reliability, usability, or suitability for any particular purpose of the data.

Submitted:	Checked By:
Recommended:	Checked By:
Approved:	Checked By:

**MISSISSIPPI RIVER - B.R. TO GULF
BAYOU GOULA CROSSING
MD_13_GOU_20180529_CS
29 May 2018**



LEGEND	
--- Federal Navigation Channel	0' and above
— Federal Navigation Center Line	0' to -5'
— As-built Pipeline/Cable	-5' to -10'
..... Unconfirmed Pipeline/Cable	-10' to -20'
— Project Depth Contour	-20' to -30'
○ Cable Area	-30' to -35'
□ Placement Area	-35' to -40'
⊗ Anchorage Area	-40' to 45'
⊗ Obstruction Point	-45' and below
⊗ Wrecks-Submerged	
□ Borrow Area	
● Shoalest Sounding**	
★ Beacon, General	
◆ Red Navigation Buoy	
◆ Green Navigation Buoy	



LWRP: 1.8
Gage Reading: BR:26.4D:17.5 USED: 21.3 NGVD
Sea Conditions: CALM
Vessel Name: OB189
Survey Type: CONTROL
Sounding Frequency***: HIGH

NOTES:
Horizontal Coordinate System: North American Datum of 1983 (NAD83), projected to the State Plane Coordinate System (SPCS), Louisiana South Zone. Distance units in U.S. Survey Feet.
Vertical Datum: Soundings are shown in feet and indicate depths below Low Water Reference Plane 2007 (NGVD).
Distances on the Mississippi River, above and below Head of Passes are shown at 1 mile intervals.
The location of navigation aids are based on and provided by the U.S. Coast Guard and USACE crew.
2010 Aerial Photography data source: NAIP, USDA-FSA-APFO Aerial Photography Field Office.
Reference is N.O.A. Navigation Chart No. 11370.
** Shoalest Sounding per Quarter per Reach.
*** High frequency (200 kHz) survey data represents the first signal return at a sounding location and will include suspended solids, known as "fluff", if present. Low frequency (20 kHz) survey data normally penetrates through this "fluff" layer to depict elevations of consolidated bottom material. Low frequency accuracies may vary depending on channel conditions and fathometer settings.

**Sheet Reference Number
13 of 97**

Revision Number: 3.13-20160811