

**US Army Corps of Engineers District: CEMVN**

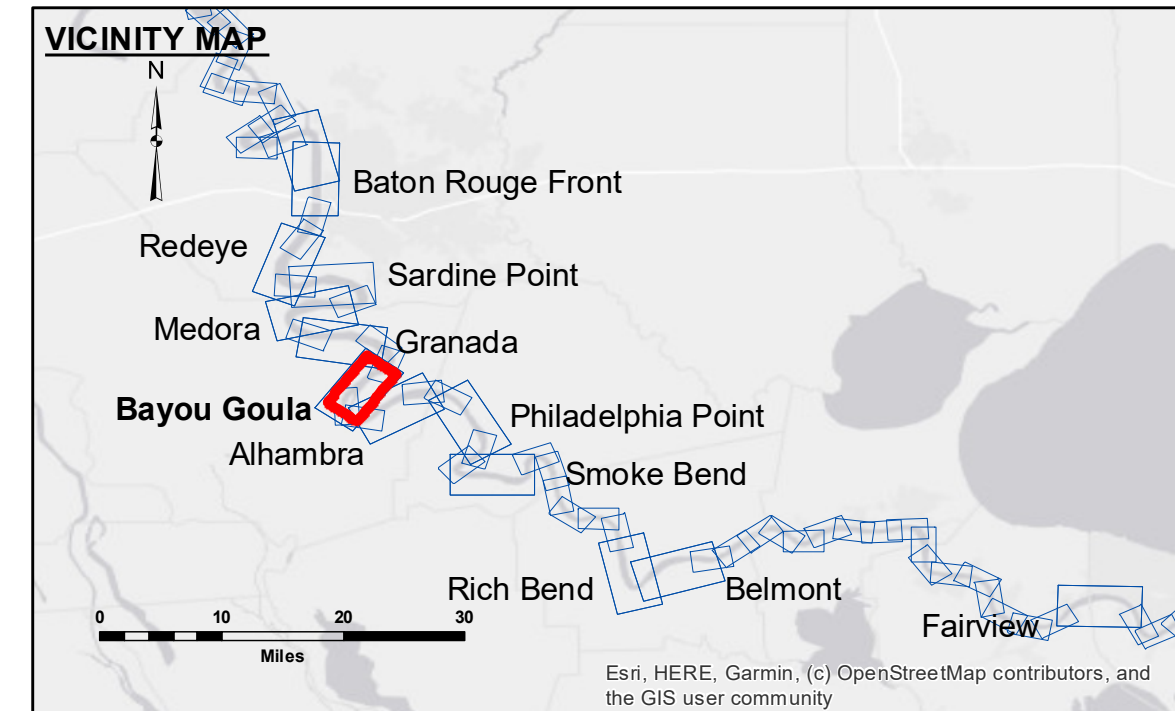
**Distribution Liability:** The data represents the results of data collection processing for a specific US Army Corps of Engineers project. It is provided for informational purposes only and is not intended for use in design or construction. The user is responsible for the results and any errors or omissions. The application of the data for other than its intended purpose is not permitted. Data Contamination: Hydrographic survey data is subject to change due to several factors including but not limited to dredging, sedimentation, and changes in channel conditions. The user is responsible for the results of the data and any errors or omissions. The information depicted on this map represents the results of a hydrographic survey conducted on or after the date of the report. The information is not to be used for any other purpose without the written consent of the US Army Corps of Engineers. The information is not to be used for any other purpose without the written consent of the US Army Corps of Engineers.

**U.S. ARMY CORPS OF ENGINEERS NEW ORLEANS DISTRICT**

Submitted:	Surveys By: RYLAND/SONNIER
Recommended:	Plotted By: BD
Approved:	Checked By: AC

**MISSISSIPPI RIVER - B.R. TO GULF BAYOU GOULA CROSSING MD\_13\_GOU\_20210503\_CS**

**03 May 2021**



LEGEND	
— Federal Navigation Channel	○ Cable Area
— Federal Navigation Center Line	▭ Placement Area
— As-built Pipeline/Cable	□ Anchorage Area
⋯ Unconfirmed Pipeline/Cable	⊗ Obstruction Point
— Project Depth Contour	⚓ Wrecks-Submerged
□ Borrow Area	☆ Beacon, General
● Shoalest Sounding**	♦ Red Navigation Buoy
⬭ 0' and above	◇ Green Navigation Buoy
⬮ 0' to -5'	⬯ -5' to -10'
⬰ -10' to -20'	⬱ -20' to -30'
⬲ -30' to -35'	⬳ -35' to -40'
⬵ -40' to -45'	⬷ -45' and below

**W**  
**N**  
**E**  
**S**

LWRP: 1.8  
 Gage Reading: BR:28.9 D:19.1 USED:23.30 NAVD  
 Sea Conditions: CALM  
 Vessel Name: OB-189  
 Survey Type: CS  
 Sounding Frequency\*\*\*: HIGH

Feet

0 500 1,000 1,500 2,000 2,500

**NOTES:**

Horizontal Coordinate System: North American Datum of 1983 (NAD83), projected to the State Plane Coordinate System (SPCS), Louisiana South Zone. Distance units in U.S. Survey Feet.

Vertical Datum: Soundings are shown in feet and indicate depths below Low Water Reference Plane 2007 (NAVD).

Distances on the Mississippi River, above and below Head of Passes are shown at 1 mile intervals.

The location of navigation aids are based on and provided by the U.S. Coast Guard and USACE crew. 2015 Aerial Photography data source: NAIP, USGS-FSA-APFO Aerial Photography Field Office.

Reference is N.O.A. Navigation Chart No. 11370.

\*\* Shoalest Sounding per Quarter per Reach.

\*\*\* High frequency (200 kHz) survey data represents the first signal return at a sounding location and will include suspended solids, known as "fluff", if present. Low frequency (20 kHz) survey data normally penetrates through this "fluff" layer to depict elevations of consolidated bottom material. Low frequency accuracies may vary depending on channel conditions and fathometer settings.

**Sheet Reference Number**

**13 of 97**

Revision Number:  
4.1-20191105