

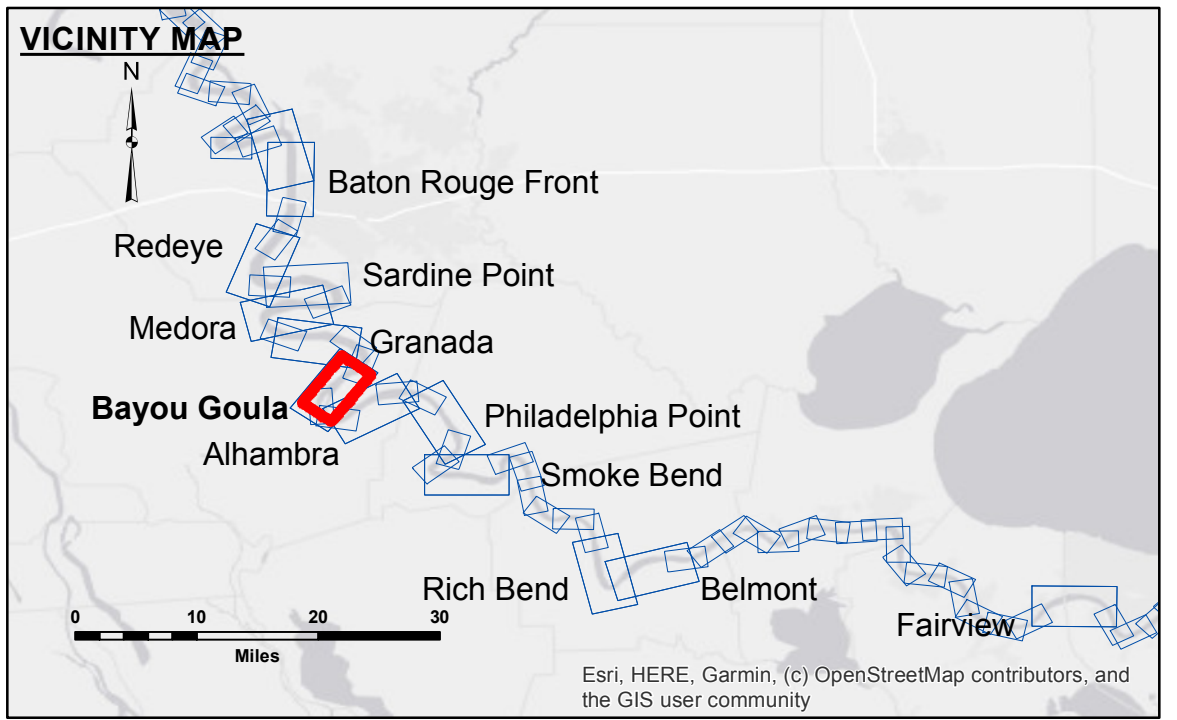
Access/Use: The United States Government furnishes these data and the recipient accepts and uses them with the express understanding that the data are not to be used for any purpose other than that for which they were originally collected, and that the data are not to be used for any purpose other than that for which they were originally collected.

Disclaimer: The data represents the results of data collection for a specific US Army Corps of Engineers project. The data is only valid for its intended use, contract, time and accuracy specifications. The user is responsible for the results of any application of the data for other than its intended purpose.

Data: Constraints: Hydrographic survey data is subject to change rapidly due to several factors including, but not limited to, changing river channel conditions, shifting sandbars, and other factors. The Army Corps of Engineers accepts no responsibility for changes in the hydrographic conditions which develop after the date of the survey. The information depicted on this map represents the results of a survey conducted on the date shown. The information is not to be considered as representing the general condition existing at that time.

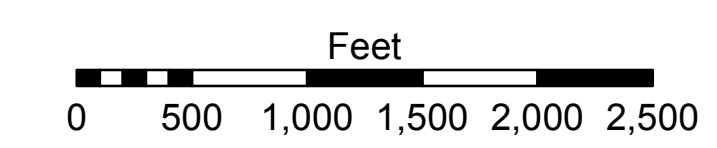
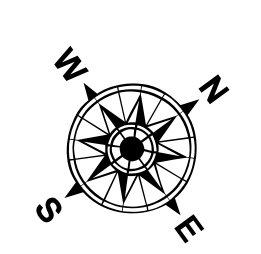
U.S. ARMY CORPS OF ENGINEERS NEW ORLEANS DISTRICT		
Submitted:	Surveyed By: RYLAND/ADAMS	Plotted By: AO
Recommended:	Chief, Survey Section	Checked By: AO
Approved:	Chief, Waterways Maintenance Section	

**MISSISSIPPI RIVER - B.R. TO GULF
BAYOU GOULA CROSSING
MD_13_GOU_20210525_CS
25 May 2021**



LEGEND

- Federal Navigation Channel
- Federal Navigation Center Line
- As-built Pipeline/Cable
- Unconfirmed Pipeline/Cable
- Project Depth Contour
- Cable Area
- Placement Area
- Anchorage Area
- ⊗ Obstruction Point
- ✈ Wrecks-Submerged
- Borrow Area
- Shoalest Sounding**
- ★ Beacon, General
- ◆ Red Navigation Buoy
- ◆ Green Navigation Buoy
- 0' and above
- 0' to -5'
- 5' to -10'
- 10' to -20'
- 20' to -30'
- 30' to -35'
- 35' to -40'
- 40' to -45'
- 45' and below



LWRP: 1.8
 Gage Reading: BR:30.3 D:20.3 USED: 24.60 NAVD
 Sea Conditions: SMOOTH
 Vessel Name: OB189
 Survey Type: CS
 Sounding Frequency***: HIGH

NOTES:

Horizontal Coordinate System: North American Datum of 1983 (NAD83), projected to the State Plane Coordinate System (SPCS), Louisiana South Zone. Distance units in U.S. Survey Feet.

Vertical Datum: Soundings are shown in feet and indicate depths below Low Water Reference Plane 2007 (NAVD).

Distances on the Mississippi River, above and below Head of Passes are shown at 1 mile intervals.

The location of navigation aids are based on and provided by the U.S. Coast Guard and USACE crew.

2015 Aerial Photography data source: NAIP, USDA-FSA-APFO Aerial Photography Field Office.

Reference is N.O.A. Navigation Chart No. 11370.

** Shoalest Sounding per Quarter per Reach.

*** High frequency (200 kHz) survey data represents the first signal return at a sounding location and will include suspended solids, known as "fluff", if present. Low frequency (20 kHz) survey data normally penetrates through this "fluff" layer to depict elevations of consolidated bottom material. Low frequency accuracies may vary depending on channel conditions and fathometer settings.

**Sheet Reference Number
13 of 97**