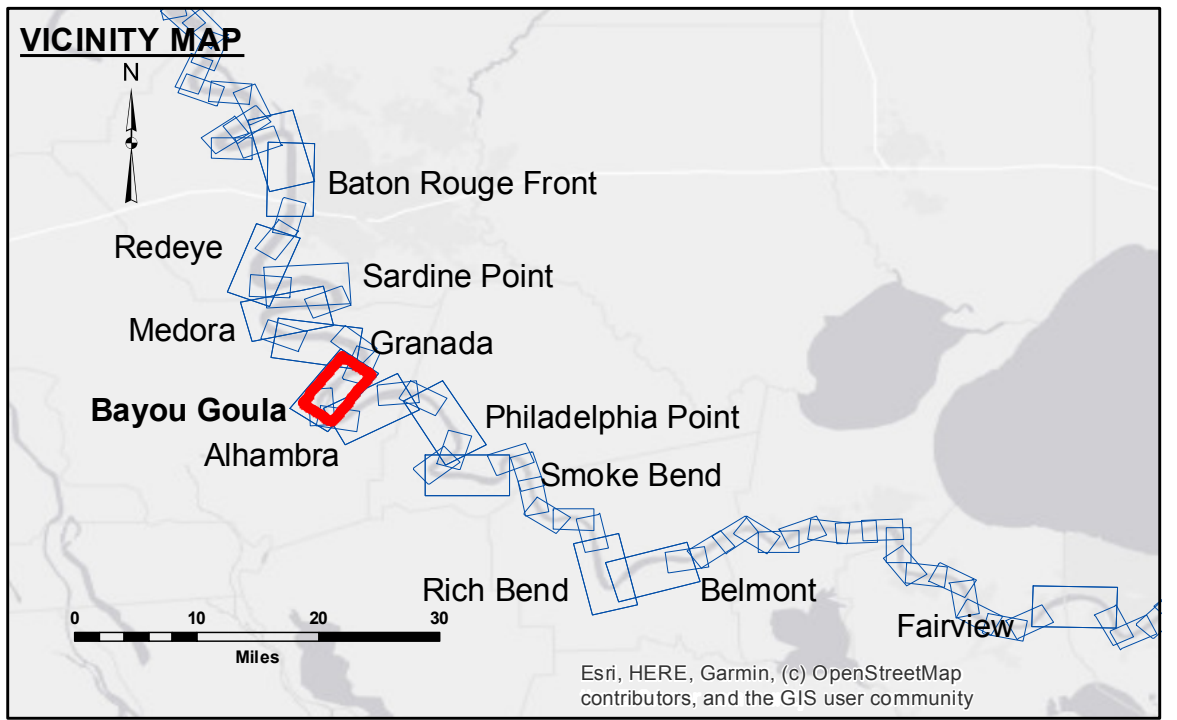


**Accession:** The United States Government furnishes these data and the recipient accepts and uses them with the express understanding that they are for official use only and are not to be distributed, reproduced, or used for any purpose other than that for which they were provided. The user is responsible for the results of any application of the data for other than its intended purpose. Data contained in this report are subject to change without notice. The user is responsible for the results of any application of the data for other than its intended purpose. The information depicted on this map represents the results of a survey conducted on the date of the survey and is not to be used for any purpose other than that for which it was intended. The information depicted on this map represents the results of a survey conducted on the date of the survey and is not to be used for any purpose other than that for which it was intended.

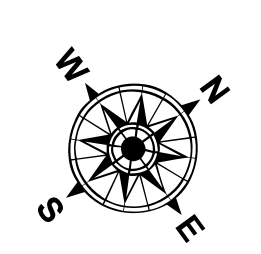
U.S. ARMY CORPS OF ENGINEERS NEW ORLEANS DISTRICT		
Submitted:	Surveyed By: DS/SPS	Plotted By: BD
Recommended: Chief, Survey Section	Checked By: AC	Checked By: AC
Approved:	Chief, Waterways Maintenance Section	

**MISSISSIPPI RIVER - B. R. TO GULF  
BAYOU GOULA CROSSING  
MD\_13\_GOU\_20210824\_CS  
24 August 2021**

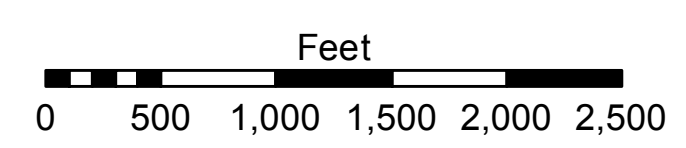


LEGEND	
--- Federal Navigation Channel	● Cable Area
— Federal Navigation Center Line	■ Placement Area
— As-built Pipeline/Cable	□ Anchorage Area
..... Unconfirmed Pipeline/Cable	⊗ Obstruction Point
— Project Depth Contour	⚓ Wrecks-Submerged
□ Borrow Area	★ Beacon, General
● Shoalest Sounding**	◆ Red Navigation Buoy
◆ Green Navigation Buoy	

0' and above	0' to -5'
-5' to -10'	-10' to -20'
-20' to -30'	-30' to -35'
-35' to -40'	-40' to -45'
-45' and below	



LWRP: 2.1  
Gage Reading: BR:10.5 D:5.4 USED:7.6 NAVD  
Sea Conditions: CALM  
Vessel Name: OB-189  
Survey Type: CS  
Sounding Frequency\*\*\*: HIGH



**NOTES:**  
Horizontal Coordinate System:  
North American Datum of 1983 (NAD83), projected to the State Plane Coordinate System (SPCS), Louisiana South Zone. Distance units in U.S. Survey Feet.  
Vertical Datum:  
Soundings are shown in feet and indicate depths below Low Water Reference Plane 2007 (NAVD).  
Distances on the Mississippi River, above and below Head of Passes are shown at 1 mile intervals.  
The location of navigation aids are based on and provided by the U.S. Coast Guard and USACE crew.  
2015 Aerial Photography data source: NAIP, USDA-FSA-APFO Aerial Photography Field Office.  
Reference is N.O.A.A. Navigation Chart No. 11370.  
\*\* Shoalest Sounding per Quarter per Reach.  
\*\*\* High frequency (200 kHz) survey data represents the first signal return at a sounding location and will include suspended solids, known as "fluff", if present. Low frequency (20 kHz) survey data normally penetrates through this "fluff" layer to depict elevations of consolidated bottom material. Low frequency accuracies may vary depending on channel conditions and fathometer settings.

**Sheet Reference Number  
13 of 97**