

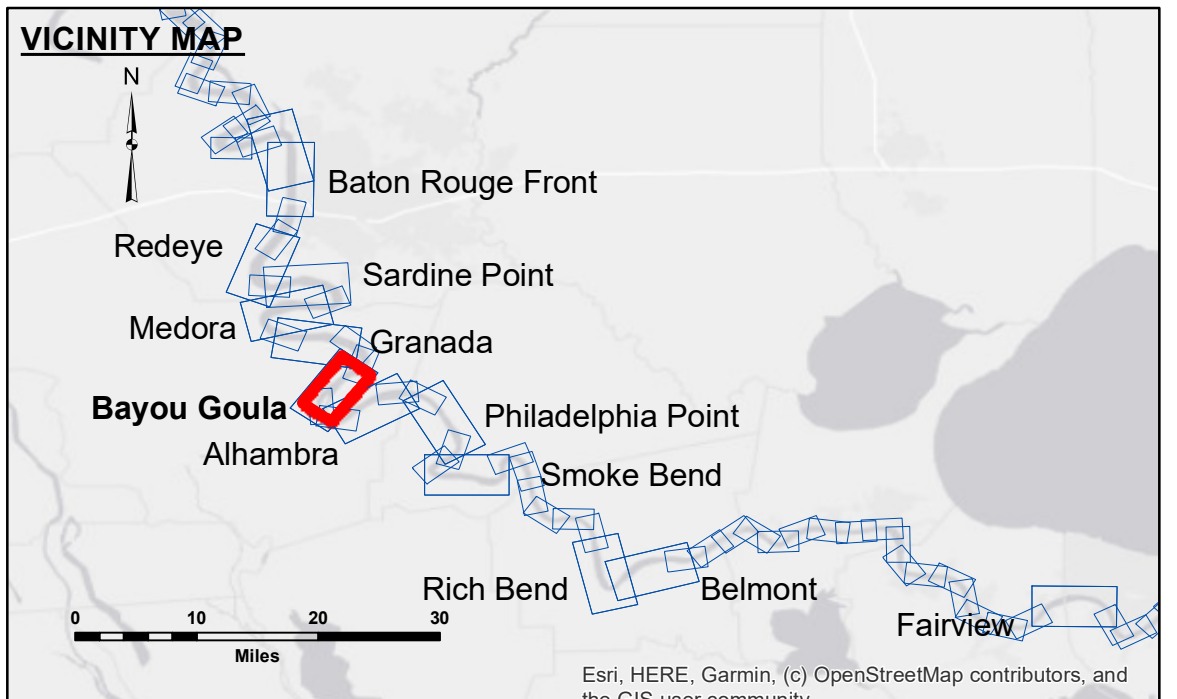
**Accession:** The United States Government furnishes these data and the recipient accepts and uses them with the express understanding that the data are not to be used for any purpose other than that for which they were originally collected, expressed, or implied concerning the accuracy, completeness, readability, usability or suitability, for any particular purpose of the recipient. The user is responsible for the results of any use of the data. The application of the data for other than its intended purpose is at the user's risk. The user is responsible for the results of any use of the data. The application of the data for other than its intended purpose is at the user's risk.

**Disclaimer:** The data represents the results of data collection for a specific US Army Corps of Engineers project. It is only valid for its intended use, content, time and accuracy specifications. The user is responsible for the results of any use of the data. The application of the data for other than its intended purpose is at the user's risk.

**Data:** The data represents the results of data collection for a specific US Army Corps of Engineers project. It is only valid for its intended use, content, time and accuracy specifications. The user is responsible for the results of any use of the data. The application of the data for other than its intended purpose is at the user's risk.

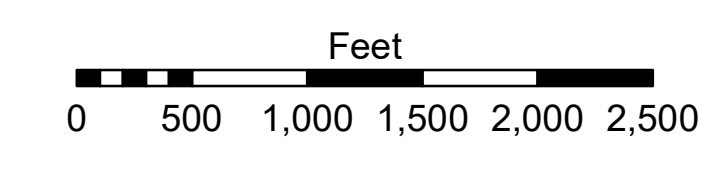
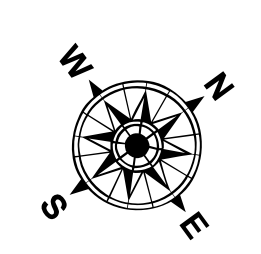
U.S. ARMY CORPS OF ENGINEERS NEW ORLEANS DISTRICT		
Submitted:	Surveyed By:	Ryland/Rhoden
Recommended:	Plotted By:	BD
Approved:	Chief, Survey Section	AC

**MISSISSIPPI RIVER - B.R. TO GULF  
BAYOU GOULA CROSSING  
MD\_13\_GOU\_20220119\_CS  
19 January 2022**



LEGEND		
--- Federal Navigation Channel	○ Cable Area	□ Borrow Area
— Federal Navigation Center Line	■ Placement Area	● Shoalest Sounding**
— As-built Pipeline/Cable	□ Anchorage Area	★ Beacon, General
..... Unconfirmed Pipeline/Cable	⊗ Obstruction Point	◆ Red Navigation Buoy
— Project Depth Contour	⚓ Wrecks-Submerged	◆ Green Navigation Buoy

0' and above
0' to -5'
-5' to -10'
-10' to -20'
-20' to -30'
-30' to -35'
-35' to -40'
-40' to -45'
-45' and below



LWRP: 2.1  
 Gage Reading: BR:26.7 D:18.4 USED:22.00 NAVD  
 Sea Conditions: CALM  
 Vessel Name: OB-189  
 Survey Type: CS  
 Sounding Frequency\*\*\*: HIGH

**NOTES:**

Horizontal Coordinate System:  
 North American Datum of 1983 (NAD83), projected to the State Plane Coordinate System (SPCS), Louisiana South Zone. Distance units in U.S. Survey Feet.

Vertical Datum:  
 Soundings are shown in feet and indicate depths below Low Water Reference Plane 2007 (NAVD).

Distances on the Mississippi River, above and below Head of Passes are shown at 1 mile intervals.

The location of navigation aids are based on and provided by the U.S. Coast Guard and USACE crew.

2015 Aerial Photography data source: NAIP, USDA-FSA-APFO Aerial Photography Field Office.

Reference is N.O.A. Navigation Chart No. 11370.

\*\* Shoalest Sounding per Quarter per Reach.

\*\*\* High frequency (200 kHz) survey data represents the first signal return at a sounding location and will include suspended solids, known as "fluff", if present. Low frequency (20 kHz) survey data normally penetrates through this "fluff" layer to depict elevations of consolidated bottom material. Low frequency accuracies may vary depending on channel conditions and fathometer settings.

**Sheet Reference Number  
13 of 97**

Revision Number:  
4.2-20200420