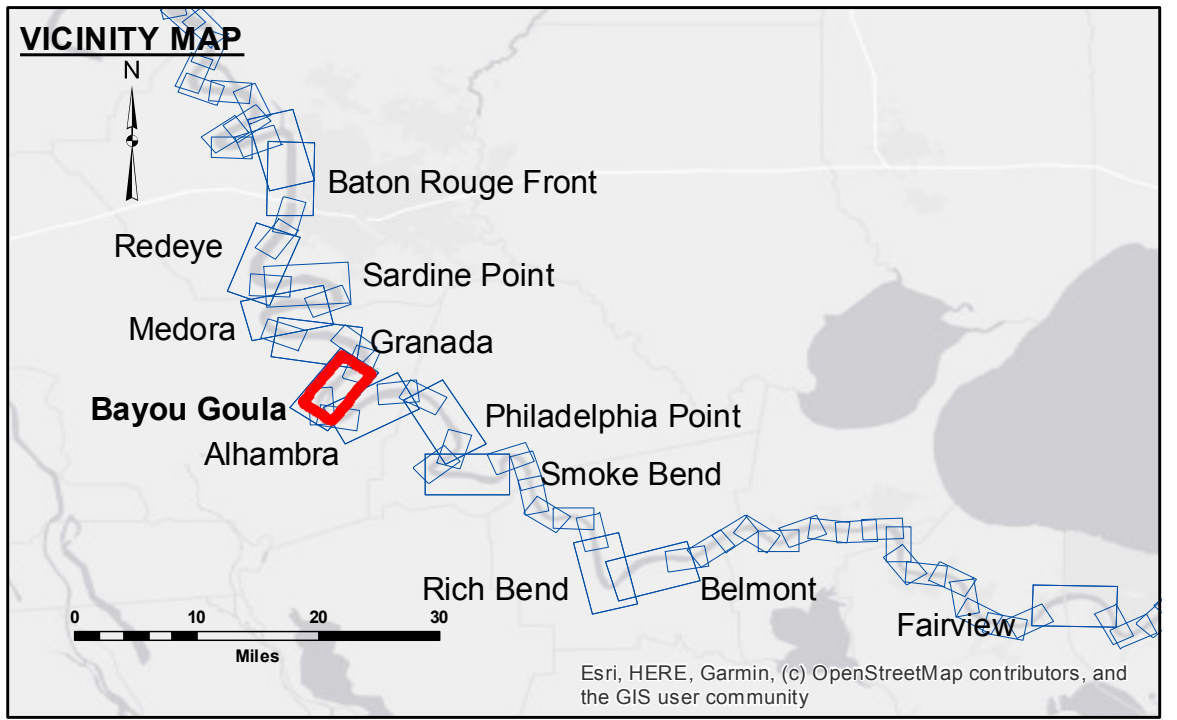


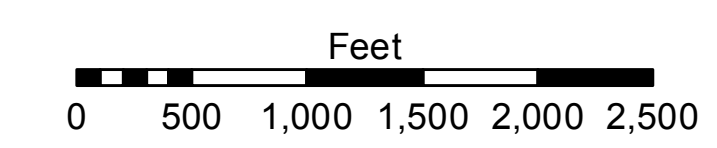
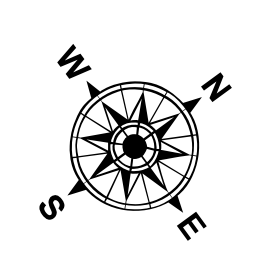
Accession: The United States Government furnishes these data and the recipient accepts and uses them with the express understanding that the data are not to be used for any purpose other than that for which they were originally prepared. The user is responsible for the results. The information depicted on this map represents the results of a survey conducted on the ground and is not to be used for any purpose other than that for which it was originally prepared. The user is responsible for the results. The information depicted on this map represents the results of a survey conducted on the ground and is not to be used for any purpose other than that for which it was originally prepared. The user is responsible for the results.

U.S. ARMY CORPS OF ENGINEERS NEW ORLEANS DISTRICT		
Submitted:	Surveyed By: RYLAND/ADAMS	Plotted By: BD
Recommended:	Chief, Survey Section	Checked By: AC
Approved:	Chief, Waterways Maintenance Section	

**MISSISSIPPI RIVER - B.R. TO GULF
BAYOU GOULA CROSSING
MD_13_GOU_20220407_CS
07 April 2022**



LEGEND		Depth Contours	
--- Federal Navigation Channel	○ Cable Area	█ 0' and above	█ 0' to -5'
— Federal Navigation Center Line	▭ Placement Area	█ -5' to -10'	█ -10' to -20'
— As-built Pipeline/Cable	⊠ Anchorage Area	█ -20' to -30'	█ -30' to -35'
⋯ Unconfirmed Pipeline/Cable	⊗ Obstruction Point	█ -35' to -40'	█ -40' to 45'
— Project Depth Contour	⚓ Wrecks-Submerged	█ -45' and below	
	□ Borrow Area		
	● Shoalest Sounding**		
	☆ Beacon, General		
	◆ Red Navigation Buoy		
	◆ Green Navigation Buoy		



LWRP: 1.8
Gage Reading: BR:32.7 D:22.3 USED:26.80 NAVD
Sea Conditions: CALM
Vessel Name: M/V VALENTOUR
Survey Type: CONDITION
Sounding Frequency***: HIGH

NOTES:
Horizontal Coordinate System: North American Datum of 1983 (NAD83), projected to the State Plane Coordinate System (SPCS), Louisiana South Zone. Distance units in U.S. Survey Feet.
Vertical Datum: Soundings are shown in feet and indicate depths below Low Water Reference Plane 2007 (NAVD).
Distances on the Mississippi River, above and below Head of Passes are shown at 1 mile intervals.
The location of navigation aids are based on and provided by the U.S. Coast Guard and USACE crew.
2015 Aerial Photography data source: NAIP, USDA-FSA-APFO Aerial Photography Field Office.
Reference is N.O.A.A. Navigation Chart No. 11370.
** Shoalest Sounding per Quarter per Reach.
*** High frequency (200 kHz) survey data represents the first signal return at a sounding location and will include suspended solids, known as "fluff", if present. Low frequency (20 kHz) survey data normally penetrates through this "fluff" layer to depict elevations of consolidated bottom material. Low frequency accuracies may vary depending on channel conditions and fathometer settings.

**Sheet Reference Number
13 of 97**