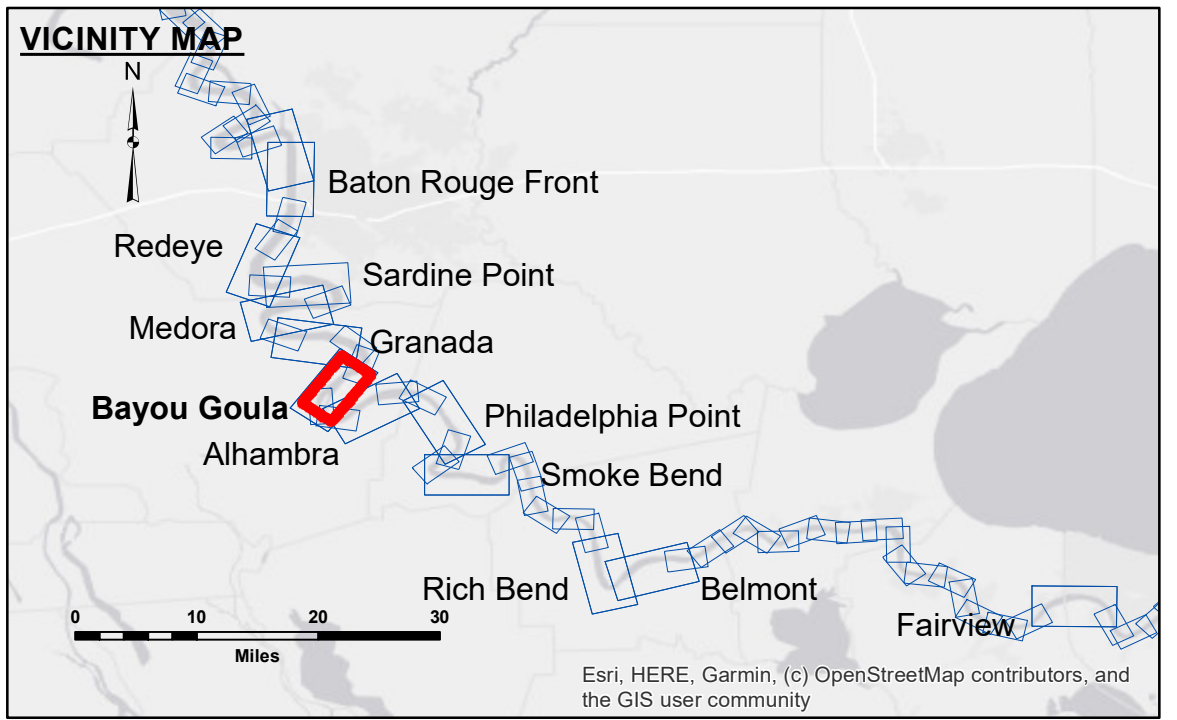


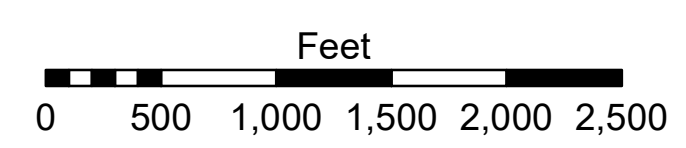
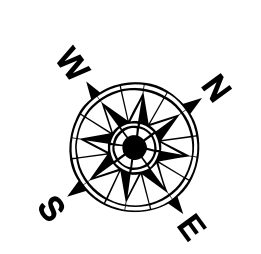
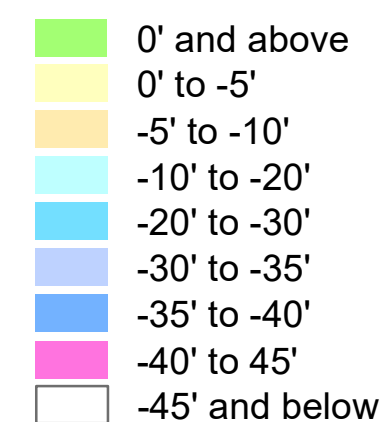
DISCLAIMER
 The United States Government (USG) provides this data and the recipient accepts and uses them with the express understanding that the USG makes no warranty, expressed or implied, regarding the accuracy, completeness, reliability, usability or suitability for any particular purpose of the data. The recipient agrees to hold the USG harmless from any liability whatsoever to any person by reason of any use made hereof. These data belong to the Government. Therefore, the recipient may not transfer, disseminate, or otherwise use these data to others without also transferring the disclaimer. The information depicted on this map represents the results of a survey conducted on the ground. The recipient is advised that the information is not intended to be used for any purpose other than that for which it was prepared. The recipient is advised that the information is not intended to be used for any purpose other than that for which it was prepared. The recipient is advised that the information is not intended to be used for any purpose other than that for which it was prepared.

U.S. ARMY CORPS OF ENGINEERS NEW ORLEANS DISTRICT		
Submitted:	Surveyed By: SP/KC	Plotted By: JH
Recommended: Chief, Survey Section	Checked By: JH	Approved: Chief, Waterways Maintenance Section

MISSISSIPPI RIVER - B. R. TO GULF
BAYOU GOULA CROSSING
MD_13_GOU_20230726_CS
 26 July 2023



LEGEND	
--- Federal Navigation Channel	● Cable Area
— Federal Navigation Center Line	■ Placement Area
— As-built Pipeline/Cable	□ Anchorage Area
..... Unconfirmed Pipeline/Cable	⊗ Obstruction Point
— Project Depth Contour	✈ Wrecks-Submerged
□ Borrow Area	★ Beacon, General
● Shoalest Sounding**	◆ Red Navigation Buoy
◆ Green Navigation Buoy	



LWRP: 1.8
 Gage Reading: BR:8.4 D:4.1 USED: 6.0 NAVD
 Sea Conditions: CALM
 Vessel Name: M/V LAFOURCHE
 Survey Type: CONDITION
 Sounding Frequency***: HIGH

NOTES:
 Horizontal Coordinate System:
 North American Datum of 1983 (NAD83), projected to the State Plane Coordinate System (SPCS), Louisiana South Zone. Distance units in U.S. Survey Feet.
 Vertical Datum:
 Soundings are shown in feet and indicate depths below Low Water Reference Plane 2007 (NAVD).
 Distances on the Mississippi River, above and below Head of Passes are shown at 1 mile intervals.
 The location of navigation aids are based on and provided by the U.S. Coast Guard and USACE crew.
 2015 Aerial Photography data source: NAIP, USDA-FSA-APFO Aerial Photography Field Office.
 Reference is N.O.A. Navigation Chart No. 11370.
 ** Shoalest Sounding per Quarter per Reach.
 *** High frequency (200 kHz) survey data represents the first signal return at a sounding location and will include suspended solids, known as "fluff", if present. Low frequency (20 kHz) survey data normally penetrates through this "fluff" layer to depict elevations of consolidated bottom material. Low frequency accuracies may vary depending on channel conditions and fathometer settings.

Sheet Reference Number
13 of 97
 Revision Number:
 4.2-20230429