

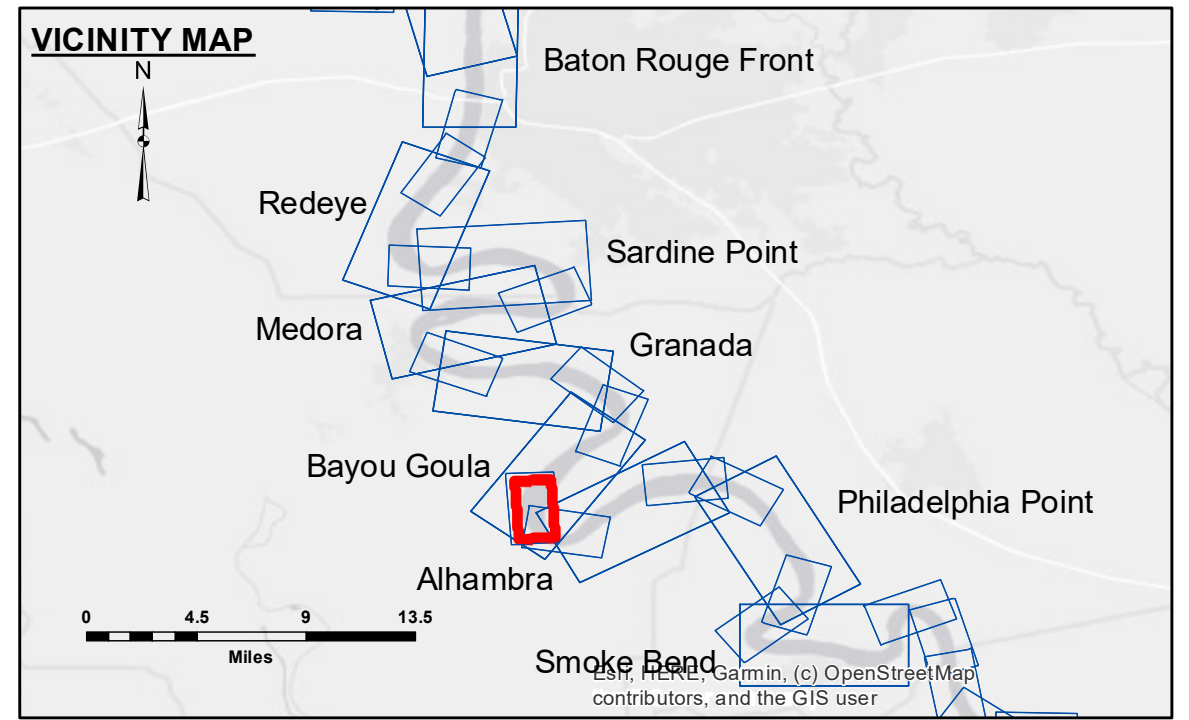
DISCLAIMER: The United States Government furnishes these data and the recipient accepts and uses them with the express understanding that the data are not guaranteed as to accuracy, completeness, or reliability, and are intended for informational purposes only. The user is responsible for the results of any use of the data. The information depicted on this map represents the results of a hydrographic survey conducted by the United States Army Corps of Engineers and is not to be used for any other purpose without the written consent of the United States Army Corps of Engineers. The information depicted on this map represents the results of a hydrographic survey conducted by the United States Army Corps of Engineers and is not to be used for any other purpose without the written consent of the United States Army Corps of Engineers.

U.S. ARMY CORPS OF ENGINEERS NEW ORLEANS DISTRICT	
Surveyed By: RYLAND/ADAMS	Plotted By: BD
Submitted:	Checked By: AC
Recommended By: Chief, Survey Section	Approved By: Chief, Waterways Maintenance Section

**MISSISSIPPI RIVER - B.R. TO GULF
WHITE CASTLE - SHEET 1
MD_14_WC1X_20210330_CS
30 March 2021**

**Sheet Reference Number
14 of 97**

Revision Number:
4.1-20191105



LEGEND

--- Federal Navigation Channel	○ Cable Area	■ Shoaling Area	■ 0' and above
— Federal Navigation Center Line	□ Placement Area	● Shoalest Sounding**	■ 0' to -5'
— As-built Pipeline/Cable	⊠ Anchorage Area	★ Beacon, General	■ -5' to -10'
..... Unconfirmed Pipeline/Cable	⊠ Obstruction Point	◆ Red Navigation Buoy	■ -10' to -20'
— Project Depth Contour	⚓ Wrecks-Submerged	◆ Green Navigation Buoy	■ -20' to -30'
			■ -30' to -35'
			■ -35' to -40'
			■ -40' to -45'
			■ -45' and below

NOTES:

Horizontal Coordinate System:
North American Datum of 1983 (NAD83), projected to the State Plane Coordinate System (SPCS), Louisiana South Zone. Distance units in U.S. Survey Feet.

Vertical Datum:
Soundings are shown in feet and indicate depths below Low Water Reference Plane 2007 (NAVD).
Distances on the Mississippi River, above and below Head of Passes are shown at 1 mile intervals.

The location of navigation aids are based on and provided by the U.S. Coast Guard and USACE crew.
2017 Aerial Photography data source: NAIP, USDA-FSA-APFO Aerial Photography Field Office.
Reference is N.O.A. Navigation Chart No. 11370.
** Shoalest Sounding per Quarter per Reach.

*** High frequency (200 kHz) survey data represents the first signal return at a sounding location and will include suspended solids, known as "fluff", if present. Low frequency (20 kHz) survey data normally penetrates through this "fluff" layer to depict elevations of consolidated bottom material. Low frequency accuracies may vary depending on channel conditions and bathymeter settings.

LWRP: 1.7
Gage Reading: BR:35.6 D:24.8 USED:28.8 NAVD
Sea Conditions: CALM
Vessel Name: OB-189
Survey Type: CONDITION
Sounding Frequency*:** HIGH

NOTES:

Horizontal Coordinate System:
North American Datum of 1983 (NAD83), projected to the State Plane Coordinate System (SPCS), Louisiana South Zone. Distance units in U.S. Survey Feet.

Vertical Datum:
Soundings are shown in feet and indicate depths below Low Water Reference Plane 2007 (NAVD).
Distances on the Mississippi River, above and below Head of Passes are shown at 1 mile intervals.

The location of navigation aids are based on and provided by the U.S. Coast Guard and USACE crew.
2017 Aerial Photography data source: NAIP, USDA-FSA-APFO Aerial Photography Field Office.
Reference is N.O.A. Navigation Chart No. 11370.
** Shoalest Sounding per Quarter per Reach.

*** High frequency (200 kHz) survey data represents the first signal return at a sounding location and will include suspended solids, known as "fluff", if present. Low frequency (20 kHz) survey data normally penetrates through this "fluff" layer to depict elevations of consolidated bottom material. Low frequency accuracies may vary depending on channel conditions and bathymeter settings.