

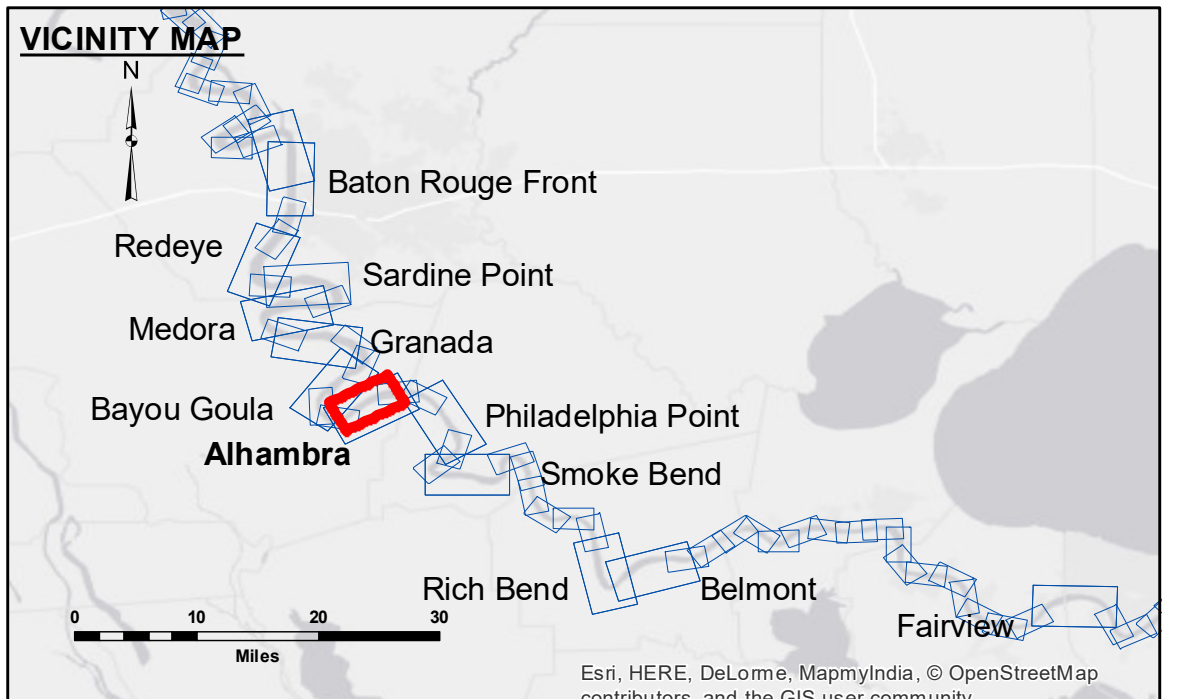
DISCLAIMER: The United States Government furnishes these data and the recipient accepts and uses them with the express understanding that the data are not warranted for any purpose other than that for which they were prepared. The user is responsible for the results of any use of the data for other than its intended purpose. The information depicted on this map represents the results of a survey conducted on the ground and is not intended to represent the general condition existing at that time.

DISTRICT LIABILITY: The data represents the results of data collection processing for a specific US Army Corps of Engineers project. It is only valid for its intended use, control, time and accuracy specifications. The user is responsible for the results of any use of the data for other than its intended purpose.

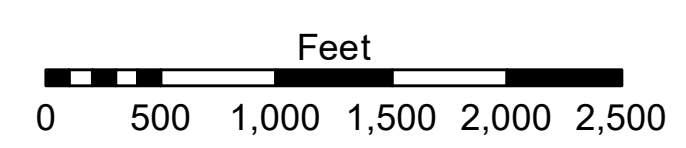
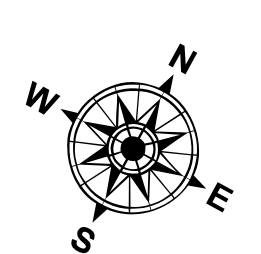
DATA CONSTRAINTS: Hydrographic survey data is subject to change rapidly due to several factors including but not limited to changing river conditions, sedimentation, and other factors. The US Army Corps of Engineers does not assume responsibility for changes in the hydrographic conditions when developed after the date of the survey. Product maintainers should not rely solely upon this internal use. Product maintainers should not rely solely upon this internal use.

U.S. ARMY CORPS OF ENGINEERS NEW ORLEANS DISTRICT	
Submitted:	Checked By: ACO
Recommended: Chief, Survey Section	Approved:
Surveyed By: DS/JJA	Plotted By: BD

**MISSISSIPPI RIVER - B.R. TO GULF
ALHAMBRA CROSSING
MD_16_ALH_20190226_BD
26 February 2019**



LEGEND		Depth Contours	
--- Federal Navigation Channel	○ Cable Area	█ 0' and above	█ 0' to -5'
— Federal Navigation Center Line	□ Placement Area	█ -5' to -10'	█ -10' to -20'
— As-built Pipeline/Cable	□ Anchorage Area	█ -20' to -30'	█ -30' to -35'
..... Unconfirmed Pipeline/Cable	✕ Obstruction Point	█ -35' to -40'	█ -40' to 45'
— Project Depth Contour	✶ Wrecks-Submerged	█ -45' and below	
	□ Borrow Area		
	● Shoalest Sounding**		
	☆ Beacon, General		
	◆ Red Navigation Buoy		
	◆ Green Navigation Buoy		



LWRP: 1.7
 Gage Reading: BR:39.3 D:28.6 USED:31.6 NGVD
 Sea Conditions: CALM
 Vessel Name: M/V LAFOURCHE
 Survey Type: CONDITION
 Sounding Frequency***: HIGH

NOTES:
 Horizontal Coordinate System:
 North American Datum of 1983 (NAD83), projected to the State Plane Coordinate System (SPCS), Louisiana South Zone. Distance units in U.S. Survey Feet.
 Vertical Datum:
 Soundings are shown in feet and indicate depths below Low Water Reference Plane 2007 (NGVD).
 Distances on the Mississippi River, above and below Head of Passes are shown at 1 mile intervals.
 The location of navigation aids are base on and provided by the U.S. Coast Guard and USACE crew.
 2015 Aerial Photography data source: NAIP, USDA-FSA-APFO Aerial Photography Field Office.
 Reference is N.O.A. Navigation Chart No. 11370.
 ** Shoalest Sounding per Quarter per Reach.
 *** High frequency (200 kHz) survey data represents the first signal return at a sounding location and will include suspended solids, known as "fluff", if present. Low frequency (20 kHz) survey data normally penetrates through this "fluff" layer to depict elevations of consolidated bottom material. Low frequency accuracies may vary depending on channel conditions and fathometer settings.

**Sheet Reference Number
16 of 97**