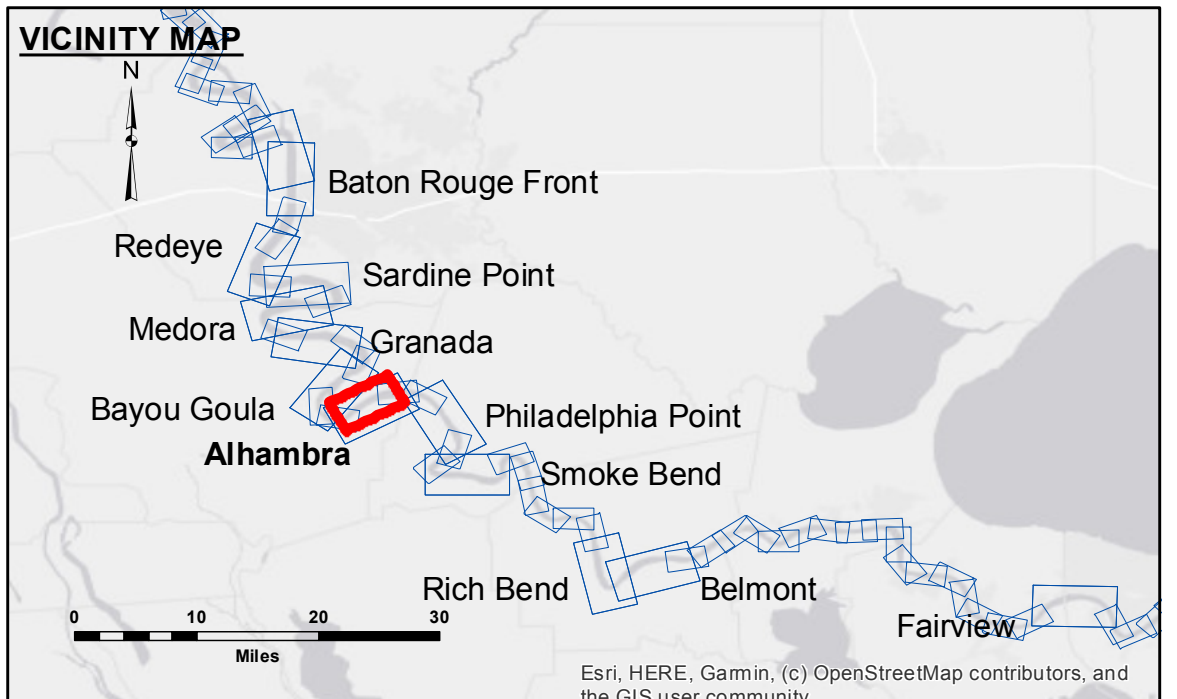


Accession: The United States Government furnishes these data and the recipient accepts and uses them with the express understanding that the data are not to be used for any purpose other than that for which they were prepared, and that the Government assumes no liability for any error or omission in the data, or for any damage or injury resulting from the use of the data. The user is responsible for the results obtained from the use of the data for other than its intended purpose.

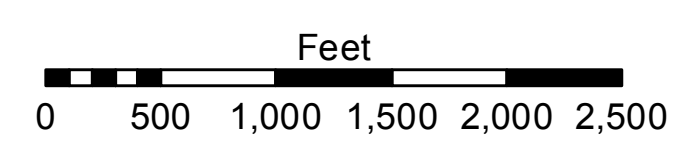
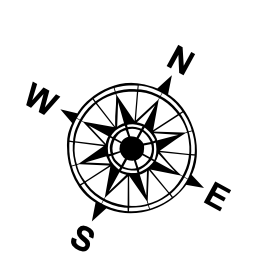
Data Accuracy: Hydrographic survey data is subject to change rapidly due to several factors including, but not limited to, changing hydrographic conditions which develop after the date of the survey. The information depicted on this map represents the results of a survey conducted under the general conditions existing at that time. The information is not to be used for navigation purposes without the approval of the District Engineer.

U.S. ARMY CORPS OF ENGINEERS NEW ORLEANS DISTRICT		
Submitted:	Surveyed By: RYLAND/ADAMS	Plotted By: AO
Recommended:	Checked By: AO	Checked By: AO
Approved:	Checked By: AO	

**MISSISSIPPI RIVER - B.R. TO GULF
ALHAMBRA CROSSING
MD_16_ALH_20210525_CS
25 May 2021**



LEGEND			
--- Federal Navigation Channel	○ Cable Area	□ Borrow Area	■ 0' and above
— Federal Navigation Center Line	▭ Placement Area	● Shoalest Sounding**	■ 0' to -5'
— As-built Pipeline/Cable	▭ Anchorage Area	☆ Beacon, General	■ -5' to -10'
..... Unconfirmed Pipeline/Cable	⊗ Obstruction Point	★ Red Navigation Buoy	■ -10' to -20'
— Project Depth Contour	⚓ Wrecks-Submerged	◆ Green Navigation Buoy	■ -20' to -30'
			■ -30' to -35'
			■ -35' to -40'
			■ -40' to -45'
			■ -45' and below



LWRP: 1.7
 Gage Reading: BR:30.3 D:20.3 USED: 23.20 NAVD
 Sea Conditions: SMOOTH
 Vessel Name: OB189
 Survey Type: CS
 Sounding Frequency***: HIGH

NOTES:

Horizontal Coordinate System:
 North American Datum of 1983 (NAD83), projected to the State Plane
 Coordinate System (SPCS), Louisiana South Zone. Distance units in U.S. Survey Feet.

Vertical Datum:
 Soundings are shown in feet and indicate depths below Low Water Reference Plane 2007 (NAVD).

Distances on the Mississippi River, above and below Head of Passes are shown
 at 1 mile intervals.

The location of navigation aids are based on and provided by the U.S. Coast Guard and USACE crew.
 2015 Aerial Photography data source: NAIP, USDA-FSA-APFO Aerial Photography Field Office.

Reference is N.O.A. Navigation Chart No. 11370.

** Shoalest Sounding per Quarter per Reach.

*** High frequency (200 kHz) survey data represents the first signal return at a sounding
 location and will include suspended solids, known as "fluff", if present. Low frequency (20 kHz)
 survey data normally penetrates through this "fluff" layer to depict elevations of consolidated bottom
 material. Low frequency accuracies may vary depending on channel conditions and bathymeter
 settings.

**Sheet
Reference
Number
16 of 97**