

PLACED BY: Access Consultants, The United States Government furnishes these data and the recipient accepts and uses them with the express warranty, suitability or liability for any particular purpose of the expressed or implied concerning the accuracy, completeness, reliability, usability or suitability for any particular purpose of the information. The user is responsible for the results. The application of the data for other than its intended purpose. The application of the data for other than its intended purpose. Data Constraints: Hydrographic survey data is subject to change rapidly due to several factors including but not limited to dredging, accretion, and other changes in the hydrographical conditions which develop after the date of the survey. The information depicted on this map represents the results of a survey and should not be considered to represent the general condition existing at that time.

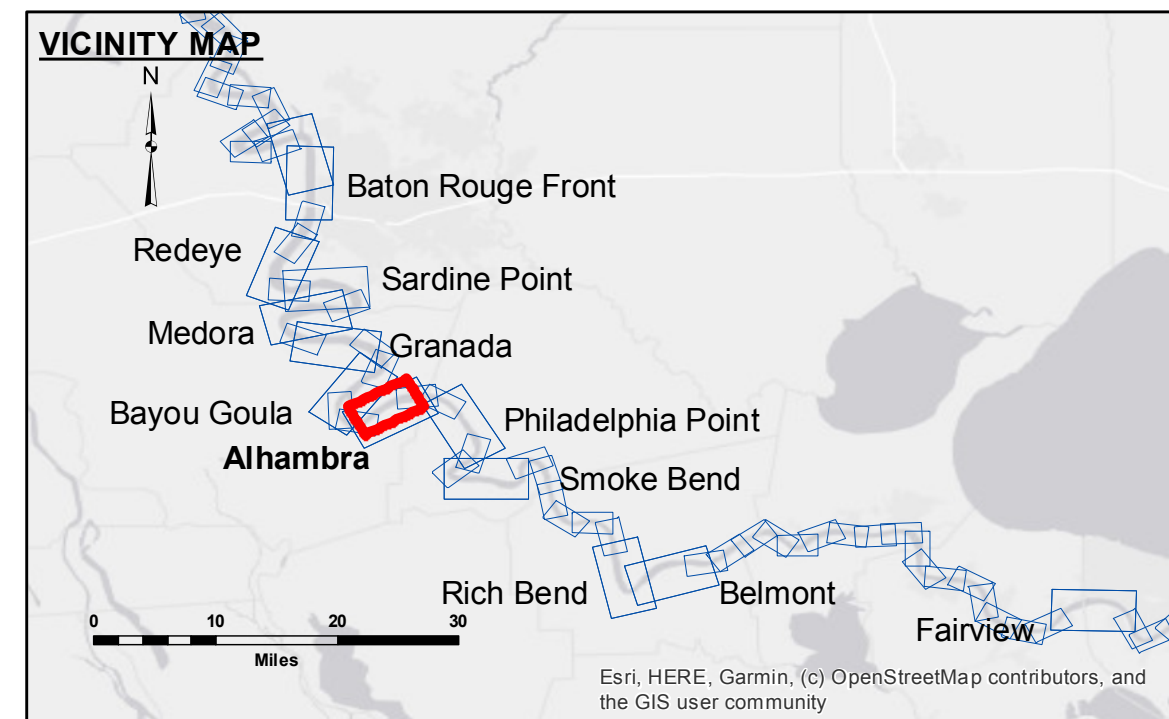
DISTRIBUTION LIABILITY: The data represents the results of data collection/processing for a specific US Army Corps of Engineers project and is only valid for its intended use, content, time and accuracy specifications. The user is responsible for the results. The application of the data for other than its intended purpose.

DATE: Constraints: Hydrographic survey data is subject to change rapidly due to several factors including but not limited to dredging, accretion, and other changes in the hydrographical conditions which develop after the date of the survey. The information depicted on this map represents the results of a survey and should not be considered to represent the general condition existing at that time.

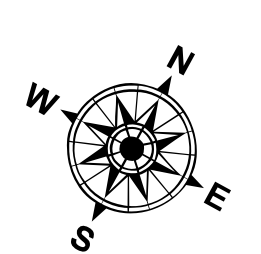
Submitted:	RYLAND/SIMMONS
Recommended:	J.H.
Approved:	J.H.

U.S. ARMY CORPS OF ENGINEERS
NEW ORLEANS DISTRICT

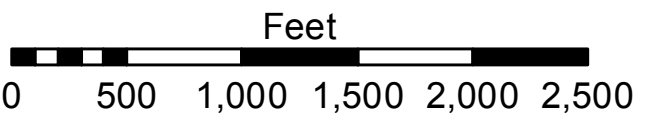
MISSISSIPPI RIVER - B.R. TO GULF
ALHAMBRA CROSSING
MD_16_ALH_20230418_CS
18 April 2023



LEGEND	
- - -	Federal Navigation Channel
—	Federal Navigation Center Line
—	As-built Pipeline/Cable
.....	Unconfirmed Pipeline/Cable
—	Project Depth Contour
○	Cable Area
□	Placement Area
⊗	Anchorage Area
⊗	Obstruction Point
⚡	Wrecks-Submerged
□	Borrow Area
●	Shoalest Sounding**
★	Beacon, General
♦	Red Navigation Buoy
◆	Green Navigation Buoy
■	0' and above
■	0' to -5'
■	-5' to -10'
■	-10' to -20'
■	-20' to -30'
■	-30' to -35'
■	-35' to -40'
■	-40' to -45'
■	-45' and below



LWRP: 1.7
Gage Reading: BR:32.8 D: 22.5 USED: 25.40 NAVD
Sea Conditions: CALM
Vessel Name: LAFOURCHE
Survey Type: CS
Sounding Frequency***: HIGH



NOTES:
Horizontal Coordinate System: North American Datum of 1983 (NAD83), projected to the State Plane Coordinate System (SPCS), Louisiana South Zone. Distance units in U.S. Survey Feet.
Vertical Datum: Soundings are shown in feet and indicate depths below Low Water Reference Plane 2007 (NAVD).
Distances on the Mississippi River, above and below Head of Passes are shown at 1 mile intervals.
The location of navigation aids are base on and provided by the U.S. Coast Guard and USACE crew.
2015 Aerial Photography data source: NAIP, USDA-FSA-APFO Aerial Photography Field Office.
Reference is N.O.A.A. Navigation Chart No. 11370.
** Shoalest Sounding per Quarter per Reach.
*** High frequency (200 kHz) survey data represents the first signal return at a sounding location and will include suspended solids, known as "fluff", if present. Low frequency (20 kHz) survey data normally penetrates through this "fluff" layer to depict elevations of consolidated bottom material. Low frequency accuracies may vary depending on channel conditions and bathymeter settings.

Sheet Reference Number
16 of 97