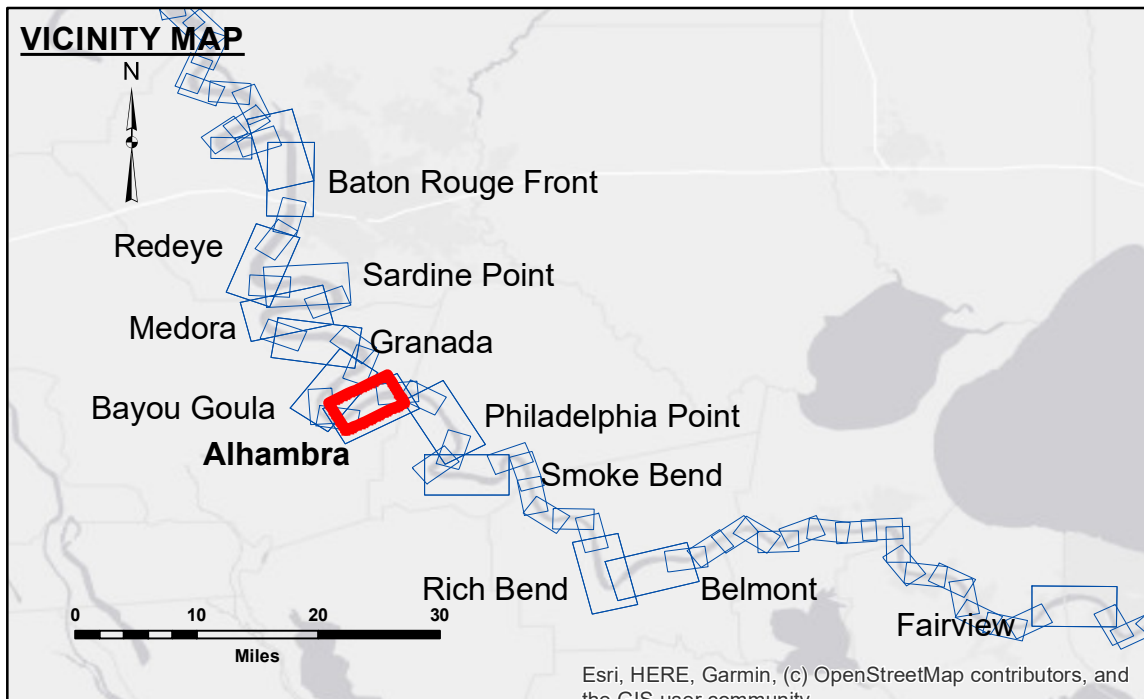


**DISCLAIMER**  
 The information depicted on this map represents the results of a survey conducted by the U.S. Army Corps of Engineers. The data represents the results of data collection for a specific project and is not intended for any other purpose. The user is responsible for the accuracy, completeness, and reliability of the data for their intended purpose. The Corps of Engineers does not warrant the accuracy of the data for any other purpose. The Corps of Engineers does not accept any liability for damages or injury resulting from the use of this data. The Corps of Engineers does not accept any liability for damages or injury resulting from the use of this data. The Corps of Engineers does not accept any liability for damages or injury resulting from the use of this data.

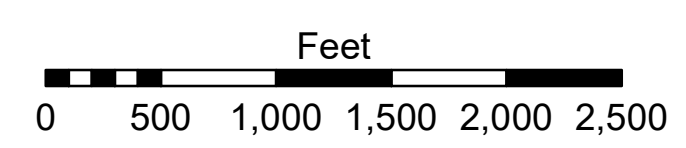
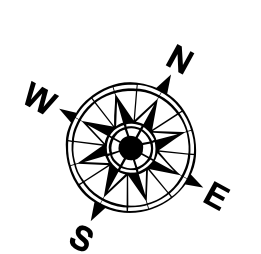
**ACCESS**  
 The United States Government furnishes these data and the recipient accepts and uses them with the express understanding that they are not to be used for any purpose other than that for which they were prepared, or implied concerning the accuracy, completeness, or reliability of the data for any other purpose. The recipient is responsible for the accuracy, completeness, and reliability of the data for their intended purpose. The recipient is responsible for the accuracy, completeness, and reliability of the data for their intended purpose. The recipient is responsible for the accuracy, completeness, and reliability of the data for their intended purpose.

U.S. ARMY CORPS OF ENGINEERS NEW ORLEANS DISTRICT		
Submitted:	Surveyed By: RYLAND/SIMMONS	Plotted By: AO
Recommended:	Chief, Survey Section	Checked By: AO
Approved:	Chief, Waterways Maintenance Section	

**MISSISSIPPI RIVER - B. R. TO GULF  
 ALHAMBRA CROSSING  
 MD\_16\_ALH\_20230503\_CS  
 03 May 2023**



LEGEND		
--- Federal Navigation Channel	○ Cable Area	□ Borrow Area
— Federal Navigation Center Line	▭ Placement Area	● Shoalest Sounding**
— As-built Pipeline/Cable	▭ Anchorage Area	☆ Beacon, General
..... Unconfirmed Pipeline/Cable	⊗ Obstruction Point	◆ Red Navigation Buoy
— Project Depth Contour	⚓ Wrecks-Submerged	◆ Green Navigation Buoy
		0' and above
		0' to -5'
		-5' to -10'
		-10' to -20'
		-20' to -30'
		-30' to -35'
		-35' to -40'
		-40' to -45'
		-45' and below



LWRP: 1.7  
 Gage Reading: BR:22.2D:13.8 USED:16.2 NAVD  
 Sea Conditions: CALM  
 Vessel Name: LAFOURCHE  
 Survey Type: CS  
 Sounding Frequency\*\*\*: HIGH

**NOTES:**  
 Horizontal Coordinate System:  
 North American Datum of 1983 (NAD83), projected to the State Plane Coordinate System (SPCS), Louisiana South Zone. Distance units in U.S. Survey Feet.  
 Vertical Datum:  
 Soundings are shown in feet and indicate depths below Low Water Reference Plane 2007 (NAVD).  
 Distances on the Mississippi River, above and below Head of Passes are shown at 1 mile intervals.  
 The location of navigation aids are based on and provided by the U.S. Coast Guard and USACE crew.  
 2015 Aerial Photography data source: NAIP, USDA-FSA-APFO Aerial Photography Field Office.  
 Reference is N.O.A. Navigation Chart No. 11370.  
 \*\* Shoalest Sounding per Quarter per Reach.  
 \*\*\* High frequency (200 kHz) survey data represents the first signal return at a sounding location and will include suspended solids, known as "fluff", if present. Low frequency (20 kHz) survey data normally penetrates through this "fluff" layer to depict elevations of consolidated bottom material. Low frequency accuracies may vary depending on channel conditions and fathometer settings.

**Sheet Reference Number  
 16 of 97**