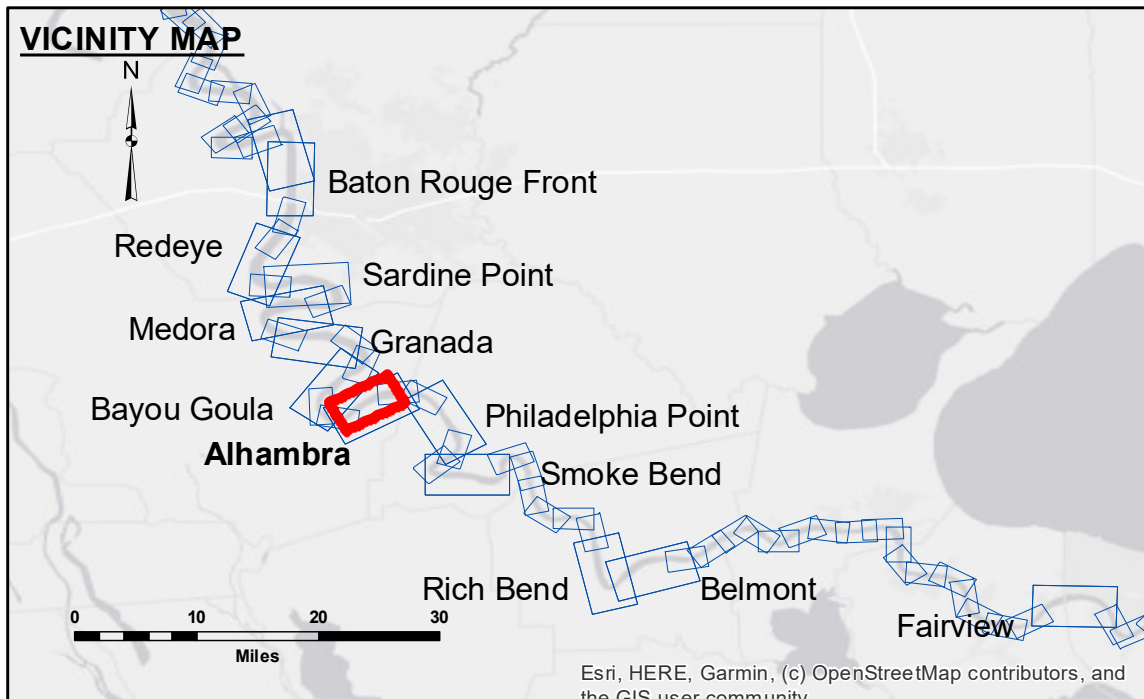


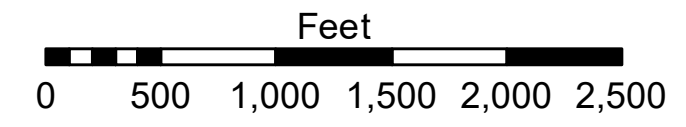
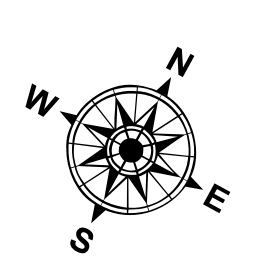
DISCLAIMER
 The United States Government furnishes these data and the recipient accepts and uses them with the express understanding that they are not to be used for any purpose other than that for which they were prepared, and that the Government makes no warranty, expressed or implied, concerning the accuracy, completeness, reliability, usability or suitability for any particular purpose of the information furnished. The user is responsible for the results of any use of this information. The application of the data for other than its intended purpose is at the user's risk. The user is responsible for the results of any use of this information. The user is responsible for the results of any use of this information. The user is responsible for the results of any use of this information.

Submitted:	Surveyed By:	Plotted By:	Checked By:
	RYLAND/SIMMONS	BD	AOJH
Recommended:	Chart Survey Section		
Approved:	Chart, Waterways Maintenance Section		

MISSISSIPPI RIVER - B.R. TO GULF ALHAMBRA CROSSING
 MD_16_ALH_20230808_CS
 08 August 2023



LEGEND		SOUNDING DEPTHS	
--- Federal Navigation Channel	○ Cable Area	■ 0' and above	LWRP: 1.7 Gage Reading: BR:5.8 D:3.0 USED:3.90 NAVD Sea Conditions: CALM Vessel Name: M/V LAFOURCHE Survey Type: CS Sounding Frequency***: HIGH
— Federal Navigation Center Line	■ Placement Area	■ 0' to -5'	
— As-built Pipeline/Cable	□ Anchorage Area	■ -5' to -10'	
..... Unconfirmed Pipeline/Cable	✕ Obstruction Point	■ -10' to -20'	
— Project Depth Contour	★ Beacon, General	■ -20' to -30'	
	◆ Wrecks-Submerged	■ -30' to -35'	
	□ Borrow Area	■ -35' to -40'	
	● Shoalest Sounding**	■ -40' to 45'	
	◆ Red Navigation Buoy	■ -45' and below	
	◆ Green Navigation Buoy		



NOTES:
 Horizontal Coordinate System: North American Datum of 1983 (NAD83), projected to the State Plane Coordinate System (SPCS), Louisiana South Zone. Distance units in U.S. Survey Feet.
 Vertical Datum: Soundings are shown in feet and indicate depths below Low Water Reference Plane 2007 (NAVD).
 Distances on the Mississippi River, above and below Head of Passes are shown at 1 mile intervals.
 The location of navigation aids are base on and provided by the U.S. Coast Guard and USACE crew.
 2015 Aerial Photography data source: NAIP, USDA-FSA-APFO Aerial Photography Field Office.
 Reference is N.O.A. Navigation Chart No. 11370.
 ** Shoalest Sounding per Quarter per Reach.
 *** High frequency (200 kHz) survey data represents the first signal return at a sounding location and will include suspended solids, known as "fluff", if present. Low frequency (20 kHz) survey data normally penetrates through this "fluff" layer to depict elevations of consolidated bottom material. Low frequency accuracies may vary depending on channel conditions and fathometer settings.

Sheet Reference Number
 16 of 97