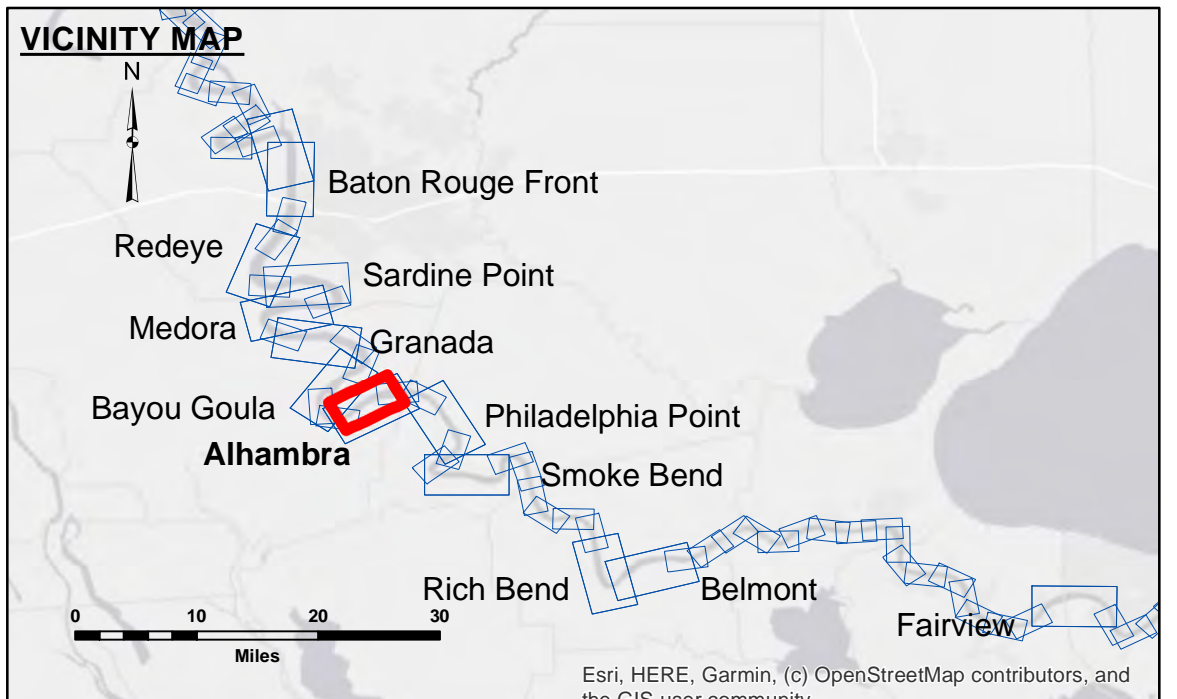


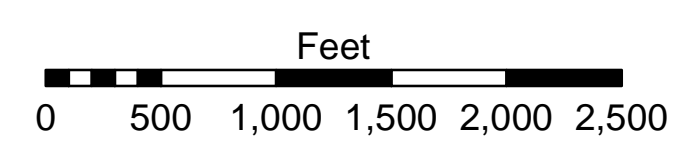
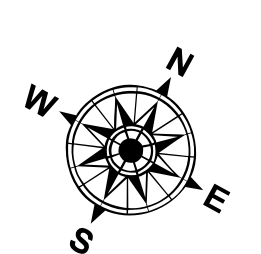
DISCLAIMER
 The information depicted on this map represents the results of a survey conducted by the U.S. Army Corps of Engineers. The data represents the results of a collection of data for a specific project and is not intended for any other purpose. The user is responsible for the accuracy, completeness, reliability, usability or suitability for any particular purpose of the information. The user is responsible for the accuracy, completeness, reliability, usability or suitability for any particular purpose of the information. The user is responsible for the accuracy, completeness, reliability, usability or suitability for any particular purpose of the information. The user is responsible for the accuracy, completeness, reliability, usability or suitability for any particular purpose of the information.

U.S. ARMY CORPS OF ENGINEERS NEW ORLEANS DISTRICT		
Submitted:	Surveyed By: RYLAND/SIMMONS	Plotted By: BD
Recommended:	Chief, Survey Section	Checked By: ADJH
Approved:	Chief, Waterways Maintenance Section	

**MISSISSIPPI RIVER - B.R. TO GULF
 ALHAMBRA CROSSING
 MD_16_ALH_20240716_CS
 16 July 2024**



LEGEND	
--- Federal Navigation Channel	● Cable Area
— Federal Navigation Center Line	■ Placement Area
— As-built Pipeline/Cable	□ Anchorage Area
..... Unconfirmed Pipeline/Cable	⊗ Obstruction Point
— Project Depth Contour	⚓ Wrecks-Submerged
□ Borrow Area	★ Beacon, General
● Shoalest Sounding**	◆ Red Navigation Buoy
★ Beacon, General	◆ Green Navigation Buoy
◆ Red Navigation Buoy	0' and above
◆ Green Navigation Buoy	0' to -5'
	-5' to -10'
	-10' to -20'
	-20' to -30'
	-30' to -35'
	-35' to -40'
	-40' to -45'
	-45' and below



LWRP: 1.7
 Gage Reading: BR:19.5 D:11.2 USED:13.80 NAVD
 Sea Conditions: CALM
 Vessel Name: M/V LAFOURCHE
 Survey Type: CS
 Sounding Frequency***: HIGH

NOTES:
 Horizontal Coordinate System:
 North American Datum of 1983 (NAD83), projected to the State Plane Coordinate System (SPCS), Louisiana South Zone. Distance units in U.S. Survey Feet.
 Vertical Datum:
 Soundings are shown in feet and indicate depths below Low Water Reference Plane 2007 (NAVD).
 Distances on the Mississippi River, above and below Head of Passes are shown at 1 mile intervals.
 The location of navigation aids are base on and provided by the U.S. Coast Guard and USACE crew.
 2015 Aerial Photography data source: NAIP, USDA-FSA-APFO Aerial Photography Field Office.
 Reference is N.O.A. Navigation Chart No. 11370.
 ** Shoalest Sounding per Quarter per Reach.
 *** High frequency (200 kHz) survey data represents the first signal return at a sounding location and will include suspended solids, known as "fluff", if present. Low frequency (20 kHz) survey data normally penetrates through this "fluff" layer to depict elevations of consolidated bottom material. Low frequency accuracies may vary depending on channel conditions and fathometer settings.

**Sheet Reference Number
 16 of 97**