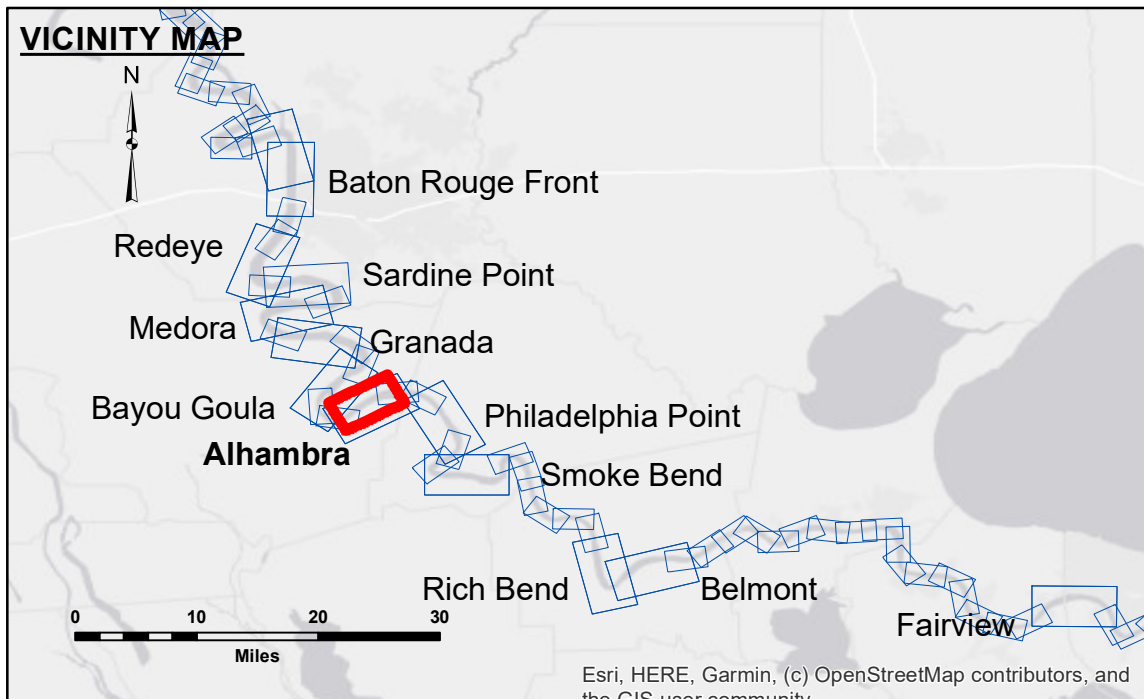


**DISCLAIMER**  
 The information depicted on this map represents the results of a survey conducted by the U.S. Army Corps of Engineers. The data represents the results of data collection/processing for a specific US Army Corps of Engineers project. It is only valid for its intended use, content, time and accuracy specifications. The user is responsible for the results and accuracy of the data for other than its intended purpose.  
 Data Constants: Hydrographic survey data is subject to change rapidly due to several factors including, but not limited to, changing hydrological conditions which develop after the date of the survey. The user is responsible for the results of the data for other than its intended purpose.  
 The information depicted on this map represents the results of a survey conducted by the U.S. Army Corps of Engineers. The data represents the results of data collection/processing for a specific US Army Corps of Engineers project. It is only valid for its intended use, content, time and accuracy specifications. The user is responsible for the results and accuracy of the data for other than its intended purpose.

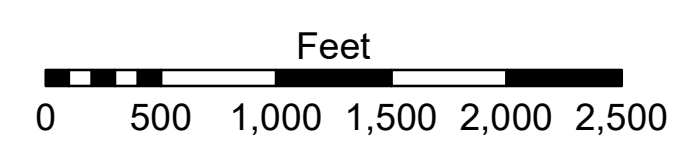
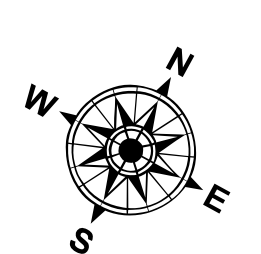
**ACCESS**  
 The United States Government (USG) makes these data and the recipient accepts and uses them with the express understanding that the USG makes no warranty, expressed or implied, concerning the accuracy, completeness, reliability, usability or suitability for any particular purpose of the data. The USG makes no liability whatsoever to any person by reason of any use made thereof. These data belong to the Government. Therefore, the recipient may not transfer, disseminate, or otherwise use these data to others without also transferring this Disclaimer. The information depicted on this map represents the results of a survey conducted by the U.S. Army Corps of Engineers. The data represents the results of data collection/processing for a specific US Army Corps of Engineers project. It is only valid for its intended use, content, time and accuracy specifications. The user is responsible for the results and accuracy of the data for other than its intended purpose.

U.S. ARMY CORPS OF ENGINEERS NEW ORLEANS DISTRICT		
Submitted:	Surveyed By: P.M.L.T.	Plotted By: J.H.
Recommended: Chief, Survey Section	Checked By: J.H.	Approved: Chief, Waterways Maintenance Section

**MISSISSIPPI RIVER - B. R. TO GULF  
 ALHAMBRA CROSSING  
 MD\_16\_ALH\_20240808\_CS  
 08 August 2024**



LEGEND		SOUNDING DEPTHS	
--- Federal Navigation Channel	○ Cable Area	■ 0' and above	LWRP: 1.7 Gage Reading: RTK VRN: 8.90 NAVD88 AVG Sea Conditions: CALM Vessel Name: OB189 Survey Type: CS Sounding Frequency***: 200
— Federal Navigation Center Line	□ Placement Area	■ 0' to -5'	
— As-built Pipeline/Cable	□ Anchorage Area	■ -5' to -10'	
..... Unconfirmed Pipeline/Cable	⊗ Obstruction Point	■ -10' to -20'	
— Project Depth Contour	★ Beacon, General	■ -20' to -30'	
	◆ Wrecks-Submerged	■ -30' to -35'	
		■ -35' to -40'	
		■ -40' to -45'	
		■ -45' and below	



**NOTES:**  
 Horizontal Coordinate System:  
 North American Datum of 1983 (NAD83), projected to the State Plane Coordinate System (SPCS), Louisiana South Zone. Distance units in U.S. Survey Feet.  
 Vertical Datum:  
 Soundings are shown in feet and indicate depths below Low Water Reference Plane 2007 (NAVD).  
 Distances on the Mississippi River, above and below Head of Passes are shown at 1 mile intervals.  
 The location of navigation aids are based on and provided by the U.S. Coast Guard and USACE crew.  
 2015 Aerial Photography data source: NAIP, USDA-FSA-APFO Aerial Photography Field Office.  
 Reference is N.O.A. Navigation Chart No. 11370.  
 \*\*\* Shoalest Sounding per Quarter per Reach.  
 \*\*\* High frequency (200 kHz) survey data represents the first signal return at a sounding location and will include suspended solids, known as "fluff", if present. Low frequency (20 kHz) survey data normally penetrates through this "fluff" layer to depict elevations of consolidated bottom material. Low frequency accuracies may vary depending on channel conditions and fathometer settings.

**Sheet Reference Number  
 16 of 97**