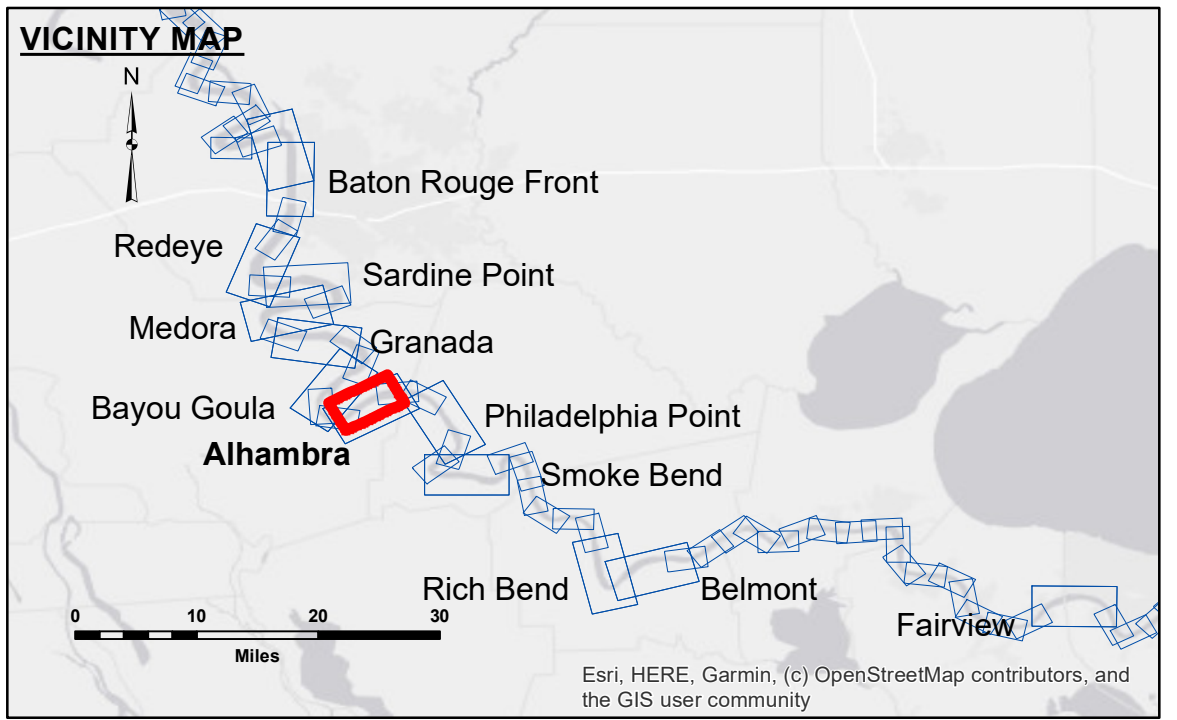


DISCLAIMER
 The United States Government (USG) makes these data and the recipient accepts and uses them with the express understanding that the USG does not warrant, either explicitly or implied, the accuracy, completeness, reliability, usability or suitability for any particular purpose of the data. The recipient is responsible for the accuracy, completeness, reliability, usability or suitability of the data for other than its intended purpose. The USG does not warrant, either explicitly or implied, the accuracy, completeness, reliability, usability or suitability of the data for other than its intended purpose. The recipient is responsible for the accuracy, completeness, reliability, usability or suitability of the data for other than its intended purpose. The recipient is responsible for the accuracy, completeness, reliability, usability or suitability of the data for other than its intended purpose. The recipient is responsible for the accuracy, completeness, reliability, usability or suitability of the data for other than its intended purpose.

ACCESS
 The information depicted on this map represents the results of a survey conducted by the U.S. Army Corps of Engineers. The information is not to be used for any purpose other than that for which it was intended. The recipient is responsible for the accuracy, completeness, reliability, usability or suitability of the data for other than its intended purpose. The recipient is responsible for the accuracy, completeness, reliability, usability or suitability of the data for other than its intended purpose. The recipient is responsible for the accuracy, completeness, reliability, usability or suitability of the data for other than its intended purpose. The recipient is responsible for the accuracy, completeness, reliability, usability or suitability of the data for other than its intended purpose.

U.S. ARMY CORPS OF ENGINEERS NEW ORLEANS DISTRICT	
Submitted:	Surveyed By: RYLAND/SIMMONS
Recommended:	Plotted By: JH
Approved:	Checked By: JH

**MISSISSIPPI RIVER - B.R. TO GULF
 ALHAMBRA CROSSING
 MD_16_ALH_20250107_CS
 07 January 2025**



LEGEND

--- Federal Navigation Channel	○ Cable Area	□ Borrow Area	■ 0' and above
— Federal Navigation Center Line	□ Placement Area	● Shoalest Sounding**	■ 0' to -5'
— As-built Pipeline/Cable	□ Anchorage Area	☆ Beacon, General	■ -5' to -10'
..... Unconfirmed Pipeline/Cable	⊗ Obstruction Point	◆ Red Navigation Buoy	■ -10' to -20'
— Project Depth Contour	⚓ Wrecks-Submerged	◆ Green Navigation Buoy	■ -20' to -30'
			■ -30' to -35'
			■ -35' to -40'
			■ -40' to -45'
			■ -45' and below

NOTES:

Horizontal Coordinate System:
 North American Datum of 1983 (NAD83), projected to the State Plane Coordinate System (SPCS), Louisiana South Zone. Distance units in U.S. Survey Feet.

Vertical Datum:
 Soundings are shown in feet and indicate depths below Low Water Reference Plane 2007 (NAVD).

Distances on the Mississippi River, above and below Head of Passes are shown at 1 mile intervals.

The location of navigation aids are based on and provided by the U.S. Coast Guard and USACE crew.

2015 Aerial Photography data source: NAIP, USDA-FSA-APFO Aerial Photography Field Office.

Reference is N.O.A. Navigation Chart No. 11370.

** Shoalest Sounding per Quarter per Reach.

*** High frequency (200 kHz) survey data represents the first signal return at a sounding location and will include suspended solids, known as "fluff", if present. Low frequency (20 kHz) survey data normally penetrates through this "fluff" layer to depict elevations of consolidated bottom material. Low frequency accuracies may vary depending on channel conditions and fathometer settings.

LWRP: 1.7
 Gage Reading: BR:21.7 D:13.3 USED:15.9 NAVD88
 Sea Conditions: CALM
 Vessel Name: LAFOURCHE
 Survey Type: CS
 Sounding Frequency***: HIGH

Feet
 0 500 1,000 1,500 2,000 2,500

**Sheet Reference Number
 16 of 97**

Revision Number:
 4.2-20250420