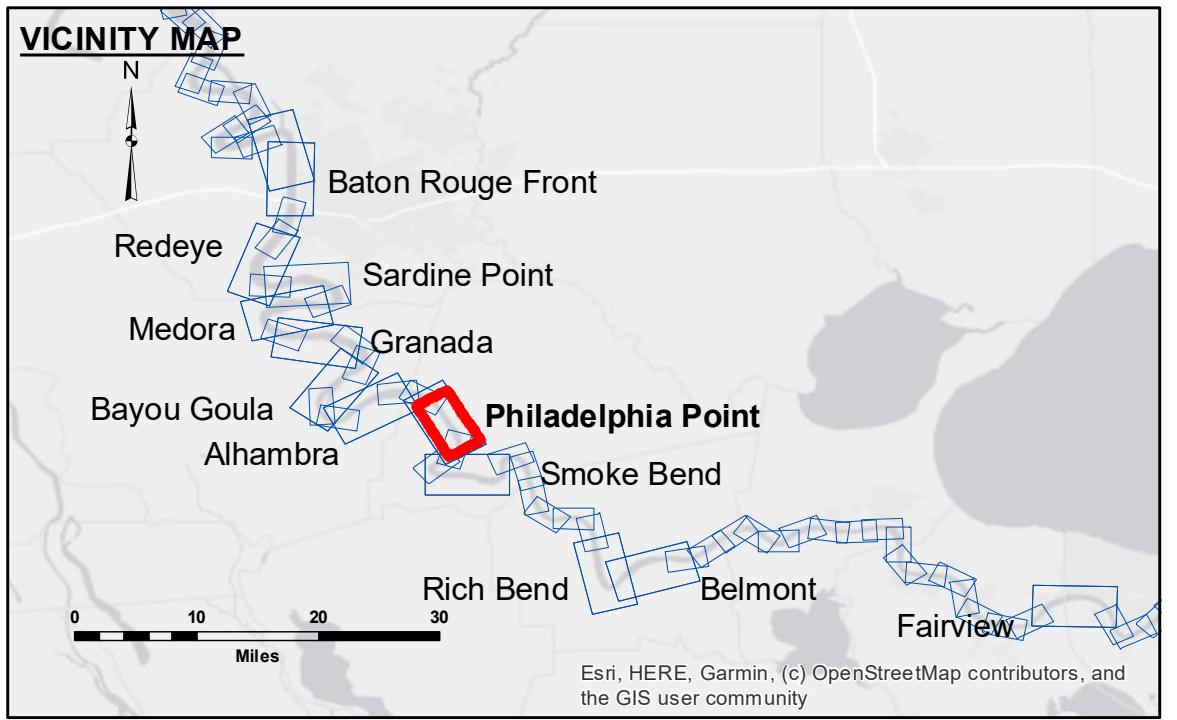


DISCLAIMER: The data represented on this map represents the results of a data collection project for a specific US Army Corps of Engineers project. The data is only valid for its intended use, control, time and accuracy specifications. The user is responsible for the results of the data. The application of the data for other than its intended purpose is not recommended. The user is responsible for the results of the data. The application of the data for other than its intended purpose is not recommended. The user is responsible for the results of the data. The application of the data for other than its intended purpose is not recommended.

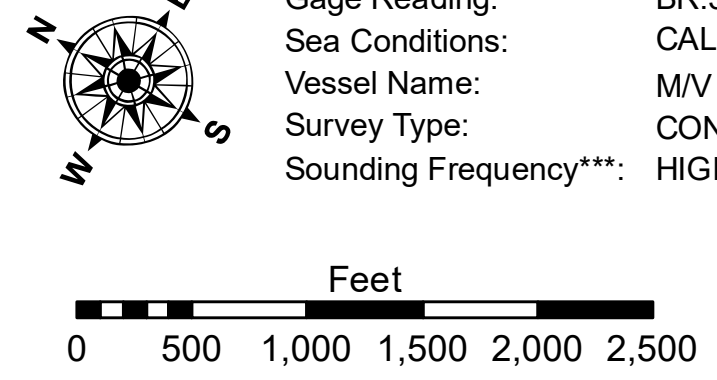
Submitted:	Surveyed By: DJS/SPS
Recommended: Chief Survey Section	Plotted By: BD
Approved: Chief Waterways Maintenance Section	Checked By: AC

**MISSISSIPPI RIVER - B.R. TO GULF
PHILADELPHIA POINT CROSSING
MD_19_PHP_20200212_CS
12 February 2020**



LEGEND	
--- Federal Navigation Channel	0' and above
— Federal Navigation Center Line	0' to -5'
— As-built Pipeline/Cable	-5' to -10'
..... Unconfirmed Pipeline/Cable	-10' to -20'
— Project Depth Contour	-20' to -30'
○ Cable Area	-30' to -35'
□ Placement Area	-35' to -40'
□ Anchorage Area	-40' to 45'
⊗ Obstruction Point	-45' and below
★ Beacon, General	
◆ Red Navigation Buoy	
◆ Green Navigation Buoy	
□ Borrow Area	
● Shoalest Sounding**	
◆ Wrecks-Submerged	

LWRP: 1.5
 Gage Reading: BR:35.8 D:25.3 USED:26.8 NAVD
 Sea Conditions: CALM
 Vessel Name: M/V LAFOURCHE
 Survey Type: CONDITION
 Sounding Frequency***: HIGH



NOTES:

Horizontal Coordinate System:
North American Datum of 1983 (NAD83), projected to the State Plane Coordinate System (SPCS), Louisiana South Zone. Distance units in U.S. Survey Feet.

Vertical Datum:
Soundings are shown in feet and indicate depths below Low Water Reference Plane 2007 (NAVD).

Distances on the Mississippi River, above and below Head of Passes are shown at 1 mile intervals.

The location of navigation aids are base on and provided by the U.S. Coast Guard and USACE crew.

2015 Aerial Photography data source: NAIP, USDA-FSA-APFO Aerial Photography Field Office.

Reference is N.O.A. Navigation Chart No. 11370.

** Shoalest Sounding per Quarter per Reach.

*** High frequency (200 kHz) survey data represents the first signal return at a sounding location and will include suspended solids, known as "fluff", if present. Low frequency (20 kHz) survey data normally penetrates through this "fluff" layer to depict elevations of consolidated bottom material. Low frequency accuracies may vary depending on channel conditions and fathometer settings.

**Sheet Reference Number
19 of 97**