

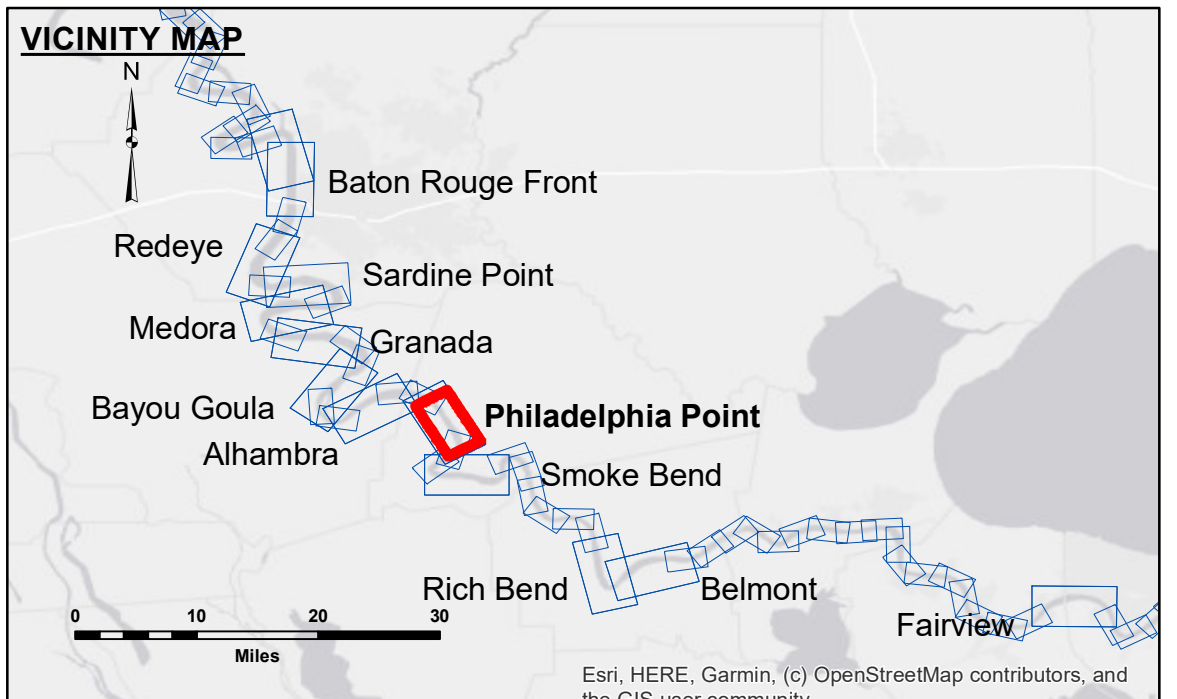
Distribution Liability: The data represents the results of data collection/processing for a specific US Army Corps of Engineers project. It is only valid for its intended use, content, time and accuracy specifications. The user is responsible for the results. The user's application of the data for other than its intended purpose is at their own risk. The user is not responsible for any damage or injury resulting from the use of the data for other than its intended purpose.

Data Constraints: Hydrographic survey data is subject to change rapidly due to several factors including but not limited to changing hydrographic conditions, changes in bathymetry, and changes in the hydrographic conditions when developing after the date of the survey. The user is responsible for the results of the data. The user is not responsible for any damage or injury resulting from the use of the data for other than its intended purpose.

Submitted:	Surveyed By:	Plotted By:	Checked By:
	JDH/SPS	AO	AO
Recommended:	Chief, Survey Section		
Approved:	Chief, Waterways Maintenance Section		

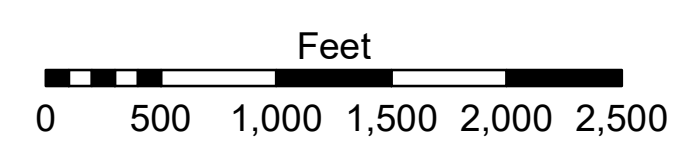
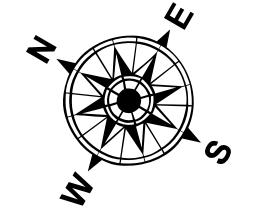
MISSISSIPPI RIVER - B.R. TO GULF PHILADELPHIA POINT CROSSING MD_19_PHP_20200909_CS

09 September 2020



LEGEND	
--- Federal Navigation Channel	● Cable Area
— Federal Navigation Center Line	■ Placement Area
— As-built Pipeline/Cable	□ Anchorage Area
..... Unconfirmed Pipeline/Cable	⊗ Obstruction Point
— Project Depth Contour	✶ Wrecks-Submerged
□ Borrow Area	★ Beacon, General
● Shoalest Sounding**	◆ Red Navigation Buoy
◆ Green Navigation Buoy	

0' and above
0' to -5'
-5' to -10'
-10' to -20'
-20' to -30'
-30' to -35'
-35' to -40'
-40' to -45'
-45' and below



LWRP: 1.5
 Gage Reading: BR:14.1F:7.7 USED:8.6 NAVD
 Sea Conditions: SMOOTH
 Vessel Name: LAFORCHE
 Survey Type: CS
 Sounding Frequency***: HIGH

NOTES:

Horizontal Coordinate System: North American Datum of 1983 (NAD83), projected to the State Plane Coordinate System (SPCS), Louisiana South Zone. Distance units in U.S. Survey Feet.

Vertical Datum: Soundings are shown in feet and indicate depths below Low Water Reference Plane 2007 (NAVD).

Distances on the Mississippi River, above and below Head of Passes are shown at 1 mile intervals.

The location of navigation aids are based on and provided by the U.S. Coast Guard and USACE crew.

2015 Aerial Photography data source: NAIP, USDA-FSA-APFO Aerial Photography Field Office.

Reference is N.O.A. Navigation Chart No. 11370.

** Shoalest Sounding per Quarter per Reach.

*** High frequency (200 kHz) survey data represents the first signal return at a sounding location and will include suspended solids, known as "fluff", if present. Low frequency (20 kHz) survey data normally penetrates through this "fluff" layer to depict elevations of consolidated bottom material. Low frequency accuracies may vary depending on channel conditions and fathometer settings.

Sheet Reference Number
 19 of 97

Revision Number: 4.1-20191115